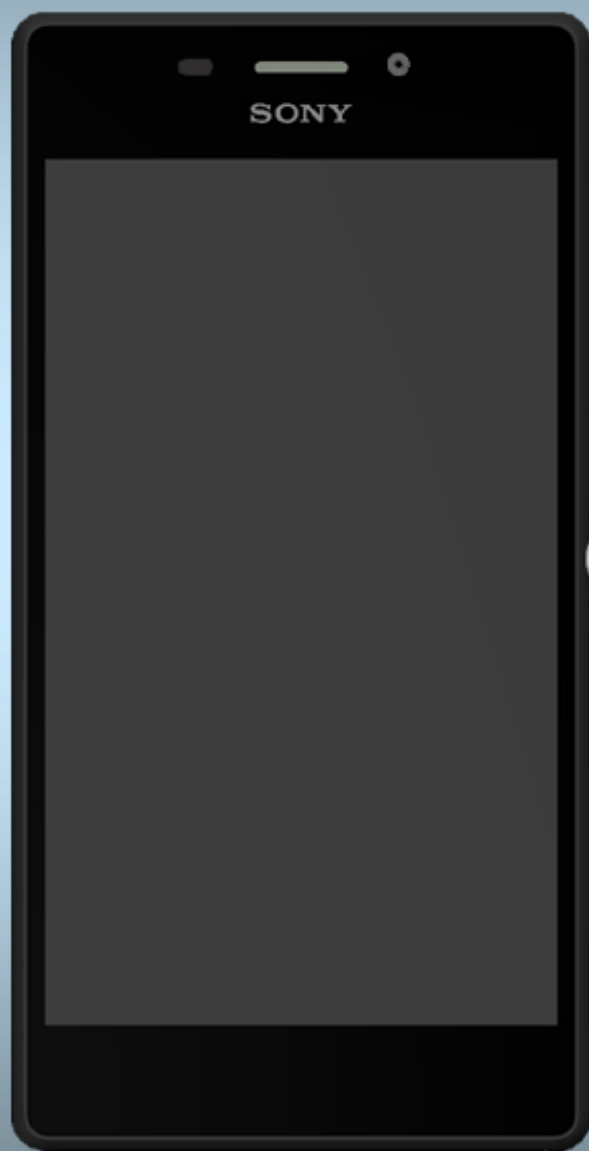


SONY

make.believe

Working Instructions

- mechanical -



Xperia M2™ Aqua
D2403, D2406

CONTENTS

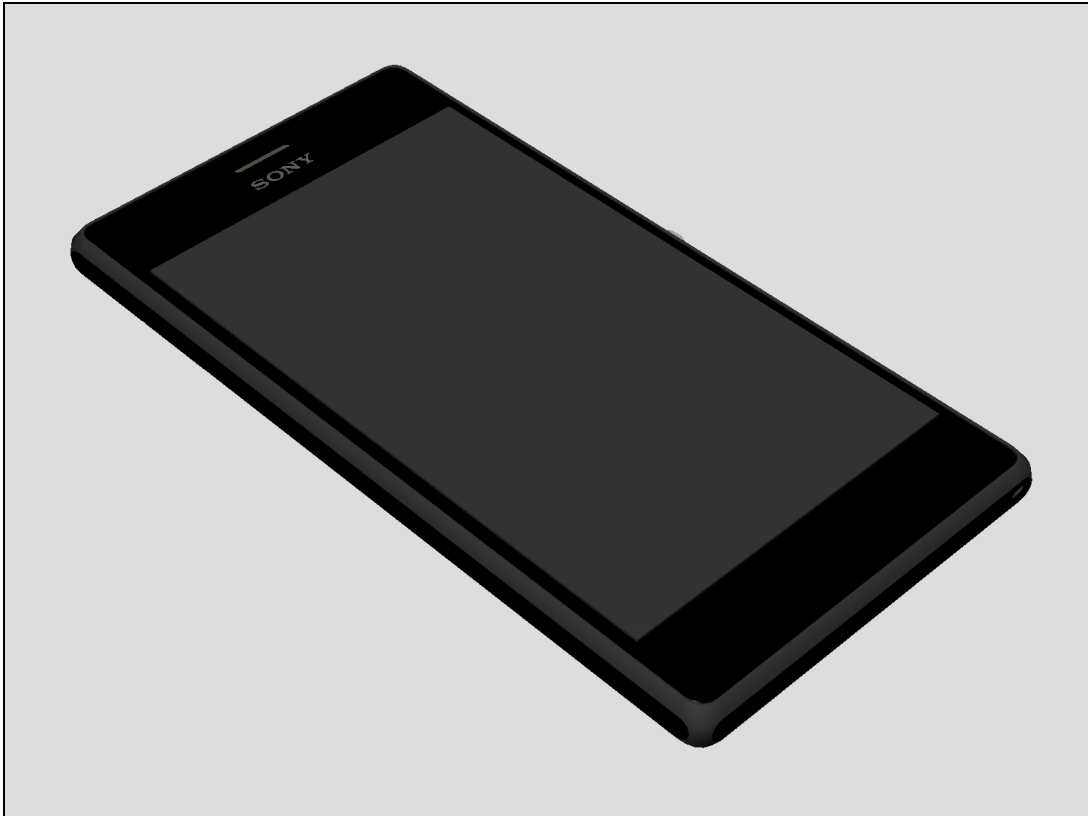
1	Exterior Views.....	4
1.1	D2403, D2406.....	4
2	Tools	5
3	Disassembly.....	7
3.1	Battery Cover Assy	7
3.2	Embedded Battery Assy	9
3.3	Main ANT Assy	10
3.4	Sub Board Assy	12
3.5	Main PBA	13
3.6	Front Cover LCM TP Assy	16
4	Replacement	17
4.1	Battery Cover Assy	17
4.2	Embedded Battery Assy	17
4.3	Main ANT Assy	17
4.4	Sub Board Assy	17
4.5	Front Cover LCM TP Assy	18
4.6	Antenna DIV & DIV Receiver Adhesive	18
4.7	RF Cable	21
4.8	Foam Front Camera	21
4.9	ESD Cloth TP BTB.....	22
4.10	Film on PL ZIF	22
4.11	Screw TORX L3.3	23
4.12	BC Adhesive1 Battery Cover.....	24
4.13	Speaker Mesh	24
4.14	BC Adhesive7 NFC Spring.....	25
4.15	BAT Adhesive1.2.3 Battery.....	26
4.16	BAT Adhesive4 Camera key	26
4.17	BAT Adhesive5 Power key	26
4.18	Front Camera Assy	26
4.19	Main Camera.....	27
4.20	Antenna BT WIFI GPS	28
4.21	USB Cover	29
4.22	Core Unit Label & Tray A thick Blank	30
4.23	Tray B thin Laser Print.....	34
4.24	SIM Cover	36
4.25	Audio Jack Cover	37
4.26	WP 1ST MIC Adhesive	38
4.27	Water Intrusion Label.....	39
4.28	Speaker & Speaker Adhesive	40

4.29	Water Intrusion Label Rectangle.....	42
4.30	PL Sensor FPC	44
4.31	Receiver & Receiver Adhesive	45
4.32	WP Speaker Adhesive.....	47
4.33	Flash Lens Adhesive.....	48
4.34	SIM FPC Assy	49
4.35	Sponge BAT BTB	52
4.36	Sponge KEY BTB	53
4.37	Sponge SIM BTB	54
4.38	Sponge TP BTB	55
4.39	Sponge Front Camera BTB.....	56
4.40	Adhesive Shield Cover	57
4.41	NFC Protection Film and NFC Black Mylar.....	58
4.42	Sponge Main Camera BTB.....	59
4.43	Board Swap – Replacement	60
4.44	Board Swap – Change Label	60
4.45	Board Swap – Customize of Software	60
5	Reassembly.....	61
5.1	Front Cover LCM TP Assy	61
5.2	Main PBA	62
5.3	Sub Board Assy	66
5.4	Main ANT Assy.....	67
5.5	Embedded Battery Assy	70
5.6	Battery Cover Assy	72
6	Revision History	76

**For general information about mechanical repair related issues, refer to
1220-1333: Generic Repair Manual - mechanical**

1 Exterior Views

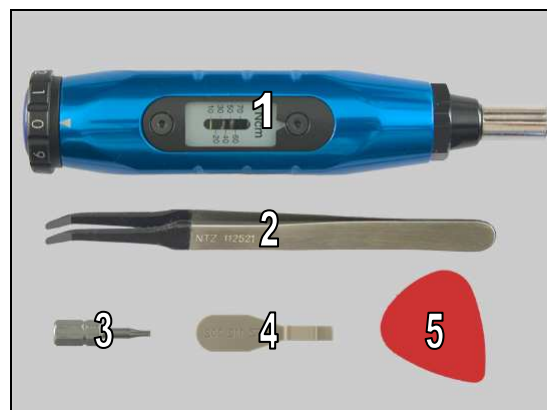
1.1 D2403, D2406



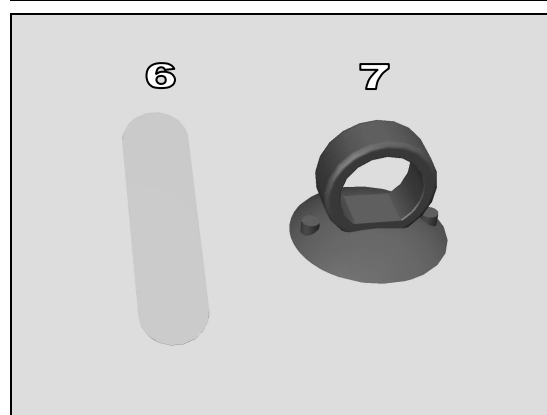
2 Tools

SPECIAL TOOLS

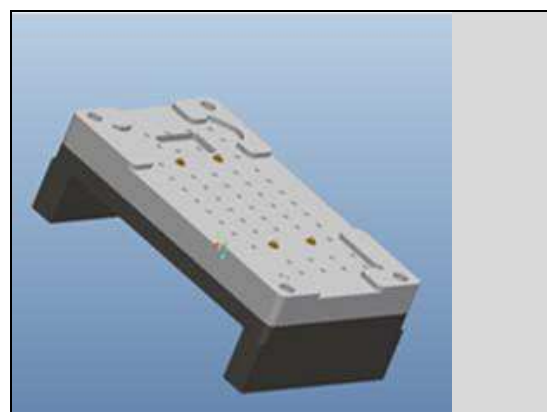
1. Torque Screwdriver
2. Flex Film Assembly Tool
3. Bits (T5)
4. Front Opening Tool
5. Guitar Pick



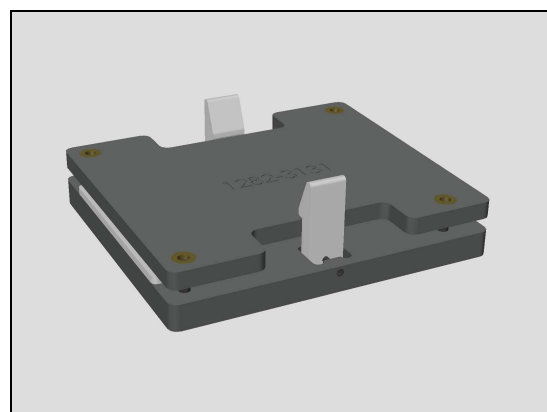
6. Flexible Disassembly tool(1284-7796)
7. Suction cup



8. Battery Cover Adhesive alignment Fixture (1287-9932)

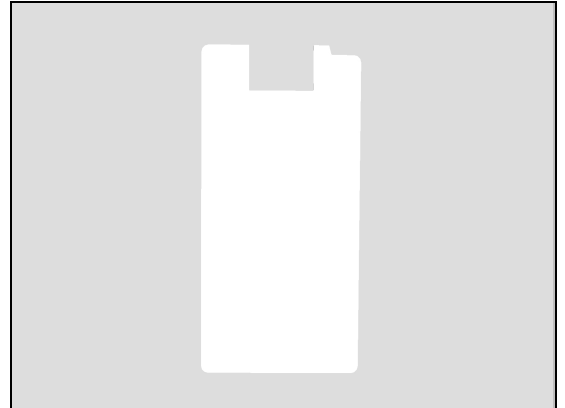


9. Battery Cover Press Fixture(1287-9930)

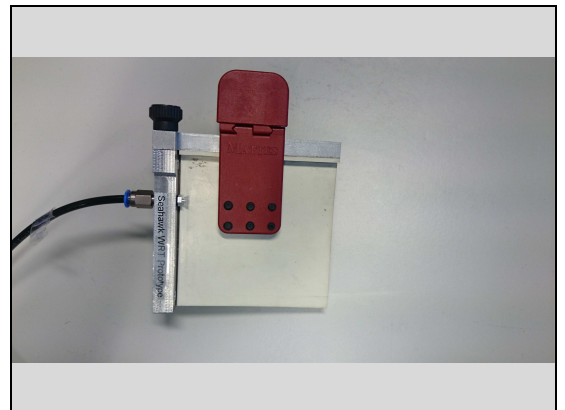


Tools

10. Flexible Assembly tool DIV (1288-5478)

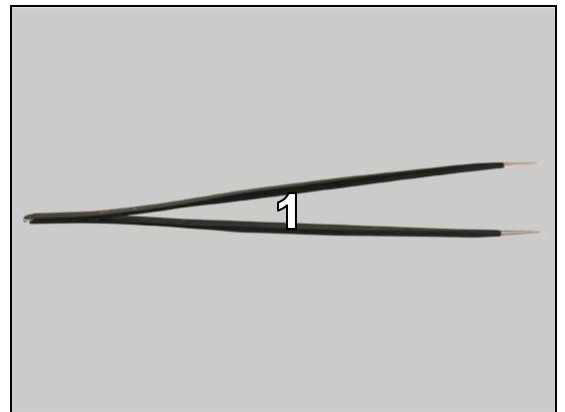


11. WRT Inlay Plate(1287-9931)



STANDARD TOOLS

1. Tweezers

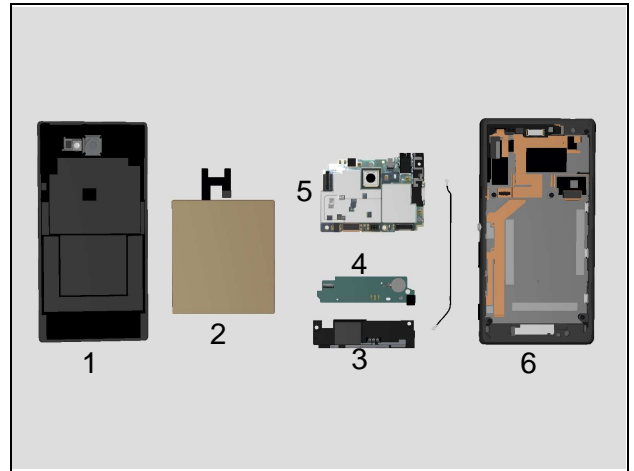


For part no's on the tools above, refer to the 'Tools Catalogue/Matrix'!

3 Disassembly

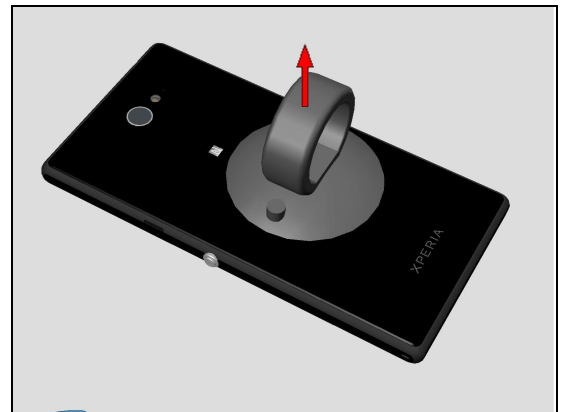
The disassembly is done in the following order:

1. Battery Cover Assy
2. Embedded Battery Assy
3. Main ANT Assy
4. Sub Board Assy
5. Main PBA
6. Front Cover LCM TP Assy



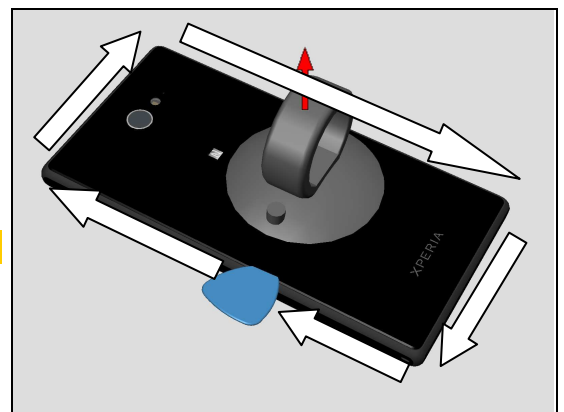
3.1 Battery Cover Assy

Use Suction cup to get space for inserting the Guitar Pick.



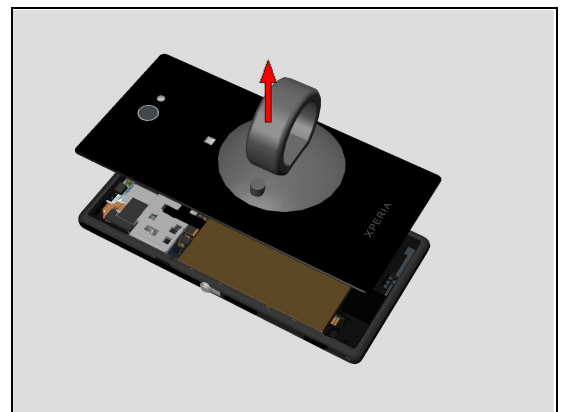
Gently slide the Guitar Pick along to release all sides of the Battery Cover Assy.

Note! Start in the middle of the left long side!



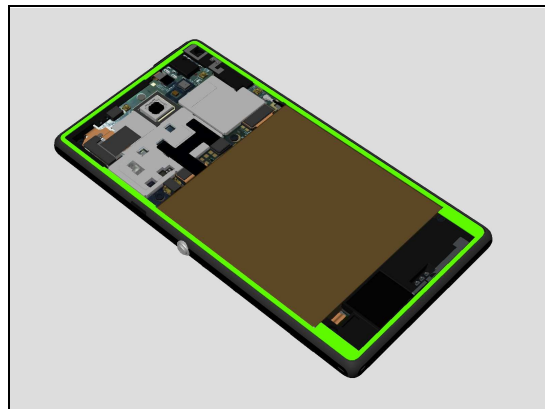
Remove the Battery Cover Assy by using the Suction cup.

Note! NFC Protection Film and NFC Black Mylar will be peeled off, Scrap!

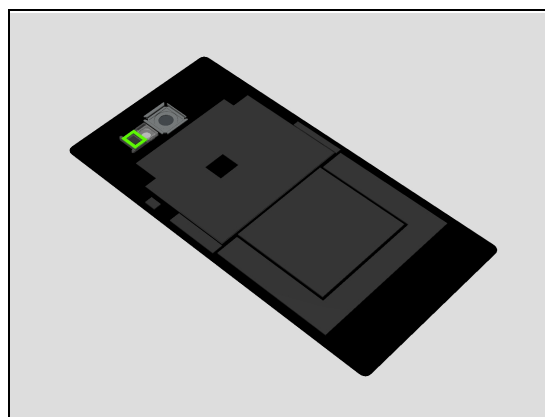


Disassembly

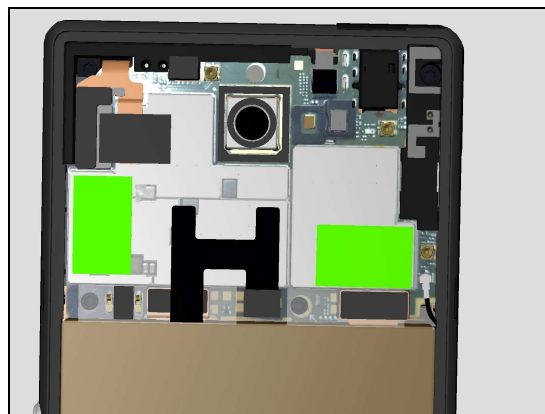
Note! Be careful when removing the Battery Cover Assy due to the BC Adhesive1 Battery Cover as shown.



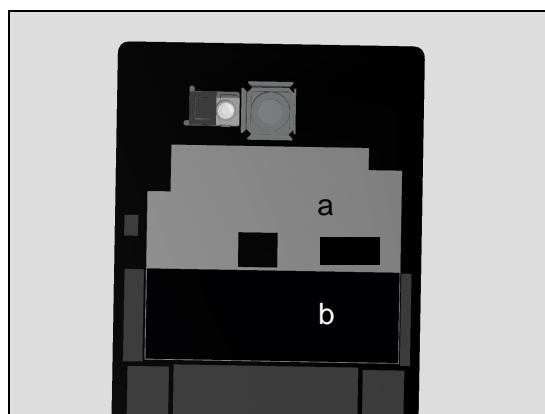
Note! Be careful when removing the Battery Cover Assy due to Flash Lens Adhesive as shown.



Note! Be careful when removing the Battery Cover Assy due to Adhesive Shield Cover as shown.



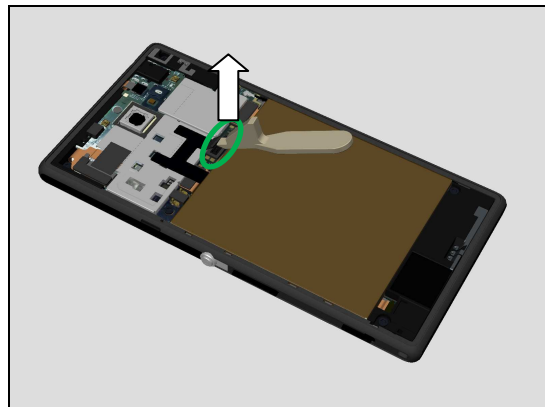
Note! NFC Protection Film (a) and NFC Black Mylar (b) will be peeled off, Scrap!



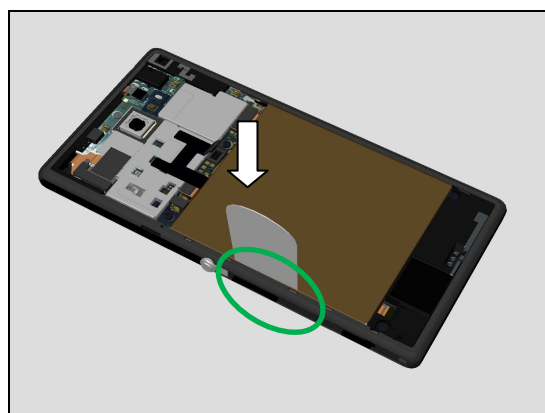
Disassembly

3.2 Embedded Battery Assy

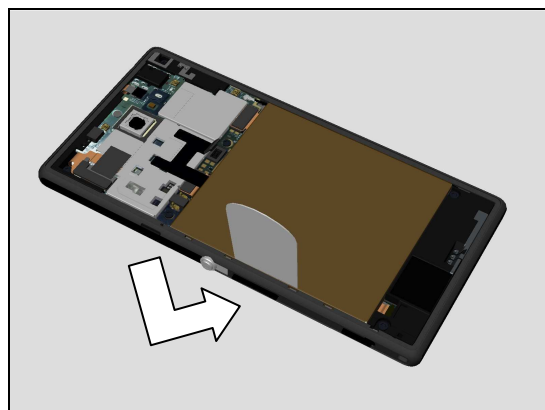
Open the BtB connectors of Embedded Battery Assy using Front Opening tool.



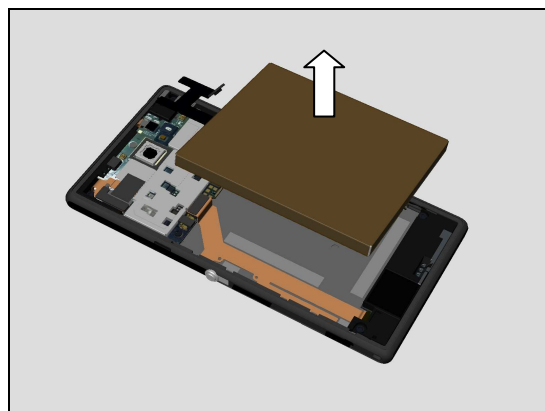
Insert Flexible Disassembly tool underneath Embedded Battery Assy as shown.



Flexible Disassembly tool is Inserted flexibly underneath Embedded Battery Assy as shown.



Remove the Embedded Battery Assy.

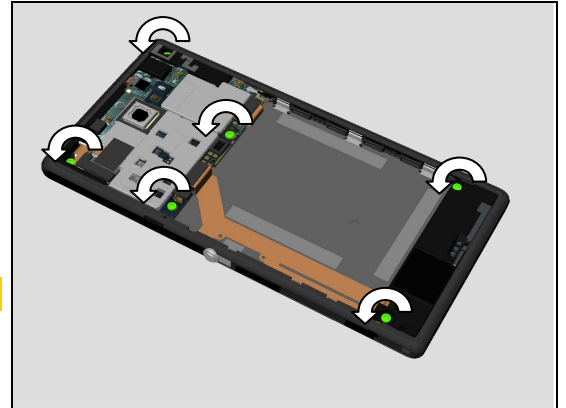


Disassembly

3.3 Main ANT Assy

Remove these six Screws by using a screwdriver with Bits (T5).

Scrap! Not to be reused!

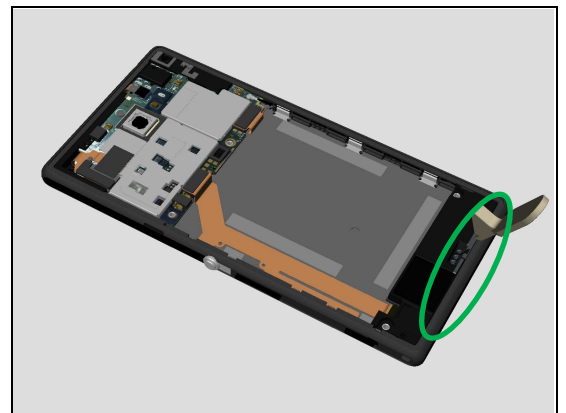


Insert Front Opening Tool to release Main ANT Assy.

Note:

There's WP 1ST MIC Adhesive under Sub Board Assy.

There's WP Speaker Adhesive on Main ANT Assy.



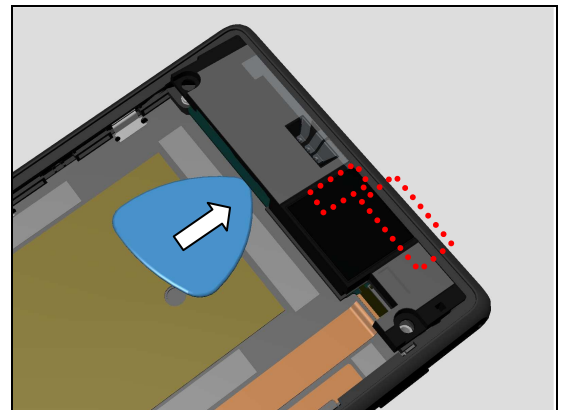
Insert Guitar Pick under Sub Board Assy.

Note:

There's WP 1ST MIC Adhesive under Sub Board Assy.

There's WP Speaker Adhesive on Main ANT Assy.

Don't insert Guitar Pick at middle area of Sub Board Assy due to Main MIC position!



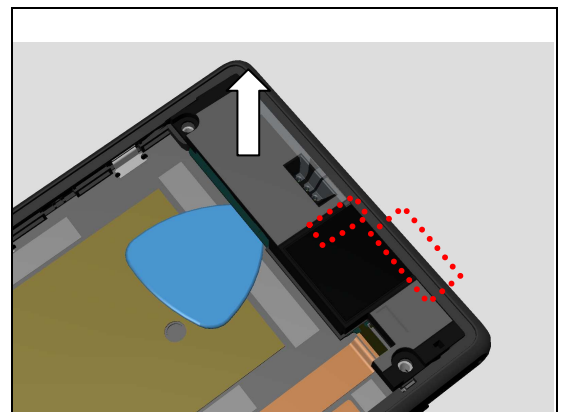
Lift up Sub Board Assy bottom side to release it.

Note:

There's WP 1ST MIC Adhesive under Sub Board Assy.

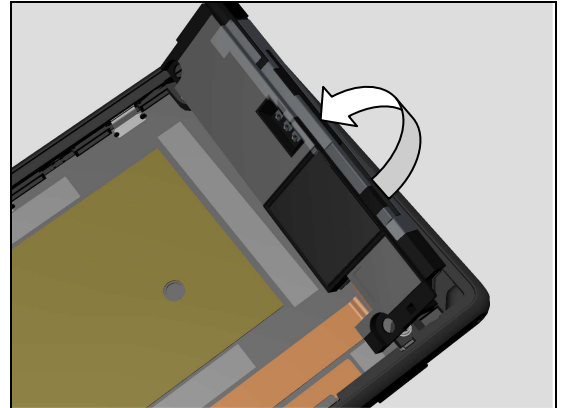
There's WP Speaker Adhesive on Main ANT Assy.

Don't insert Guitar Pick at middle area of Sub Board Assy due to Main MIC position!

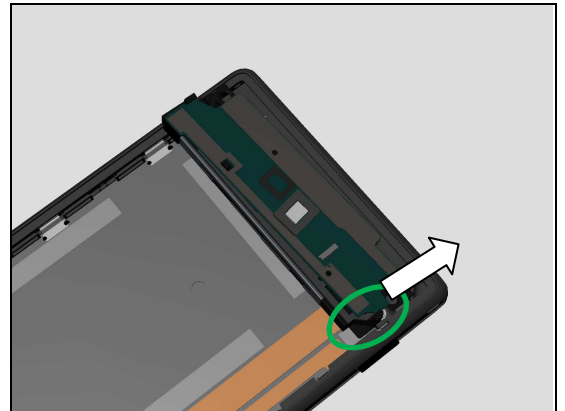


Disassembly

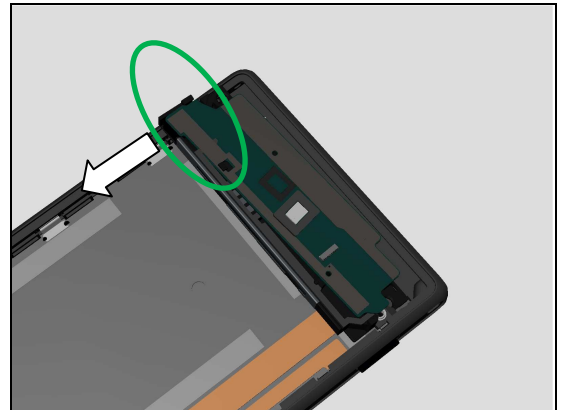
Turn over the Sub Board Assy as shown.



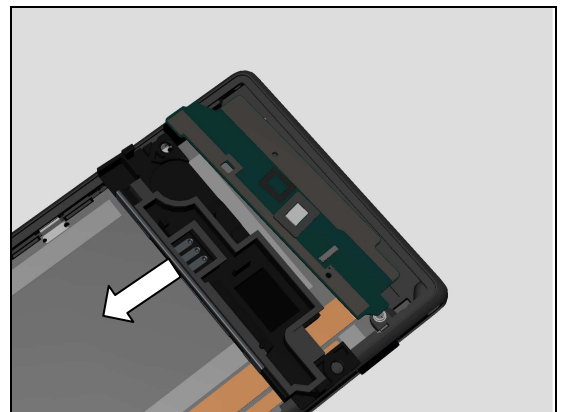
Push Sub Board Assy as shown to release its hook.



Release the other side hooks of Main ANT Assy.

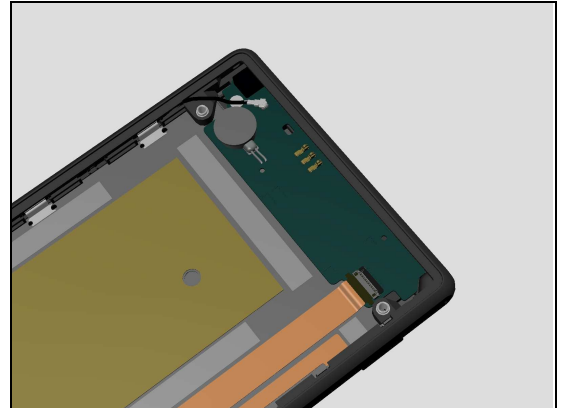


Remove the Main ANT Assy.



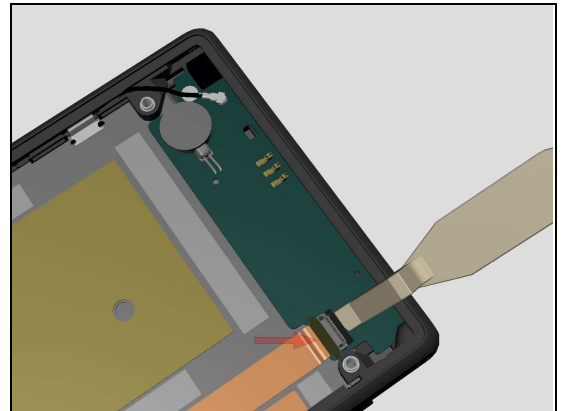
Disassembly

Turn over Sub Board Assy back on Core unit.



3.4 Sub Board Assy

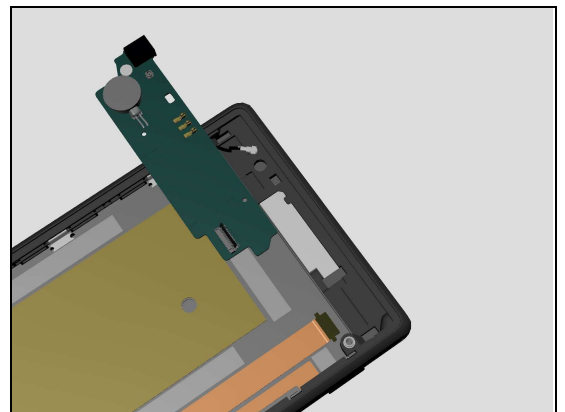
Open the ZIF connector on Sub Board Assy and pull FPC out.



Open the RF Cable connector on Sub Board Assy.

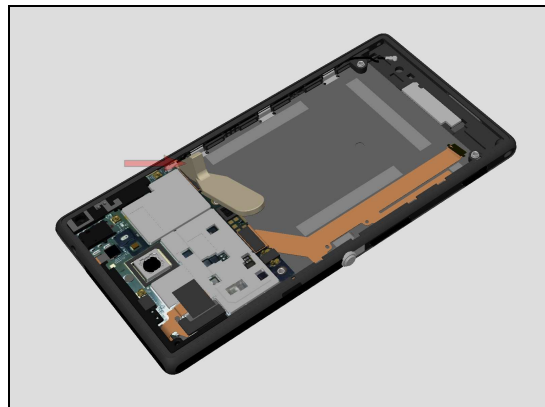


Remove the Sub Board Assy.

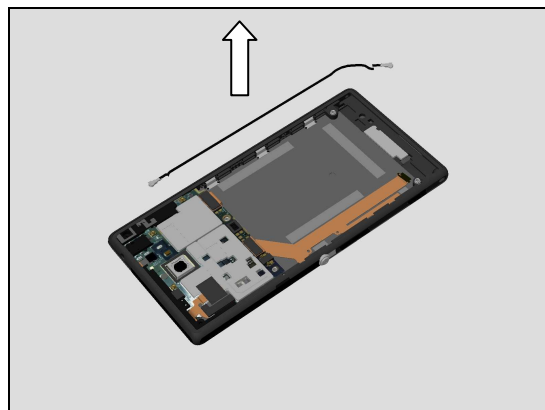


Disassembly

Open the RF Cable connector on Main PBA.



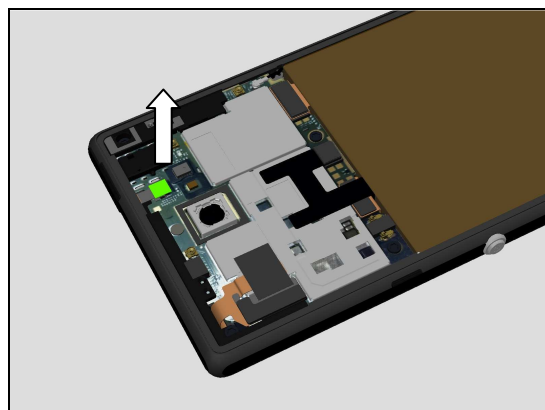
Remove the RF Cable.



3.5 Main PBA

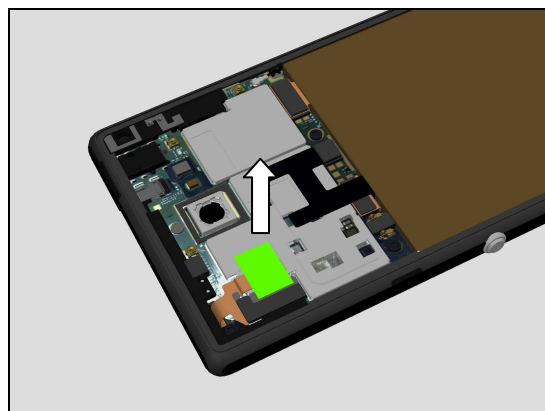
Remove the Film on PL ZIF as shown in Picture.

Scrap! Not to be reused!



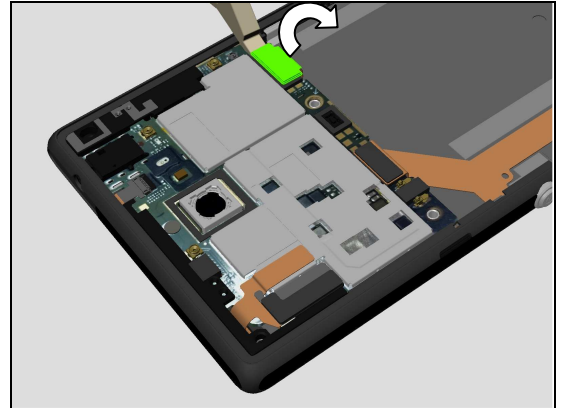
Remove the ESD Cloth TP BTB as shown in Picture.

Scrap! Not to be reused!

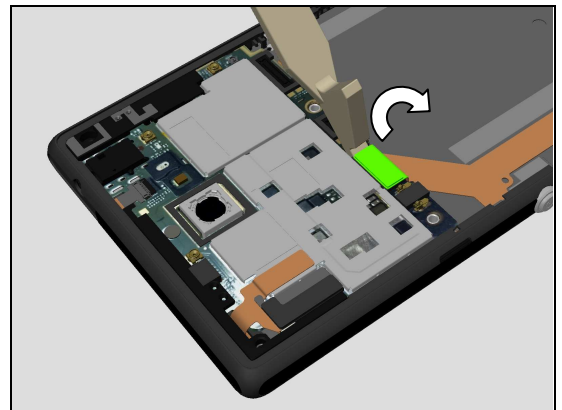


Disassembly

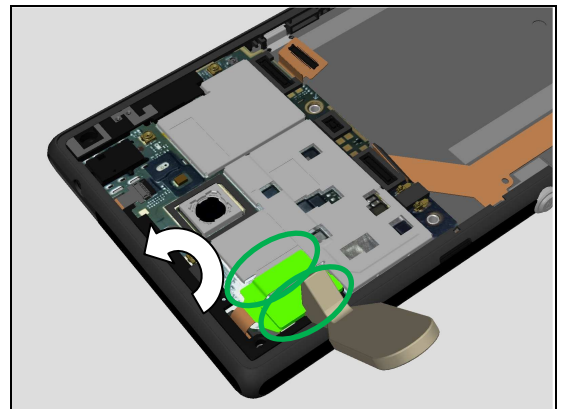
Open the SIM FPC Assy BtB connector on Main PBA.



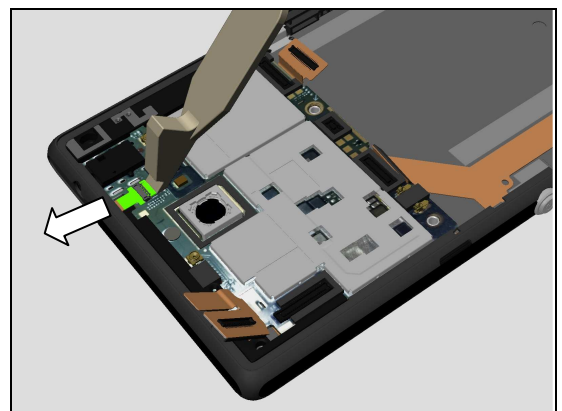
Open the Side Key FPC BtB connector on Main PBA.



Open the Touch Panel FPC BtB connector on Main PBA.
Release the adhesive FPC from Main PBA.



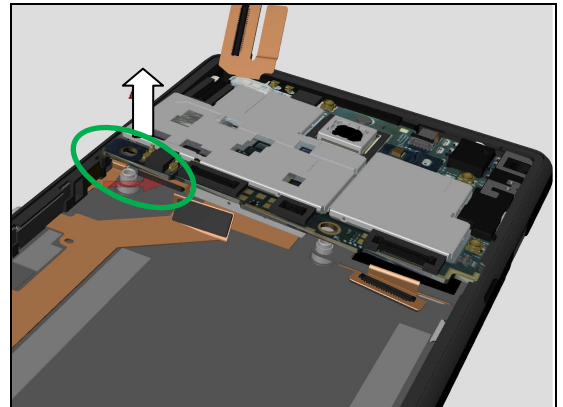
Open the PL Sensor FPC ZIF connector using Front Opening Tool and pull FPC out.



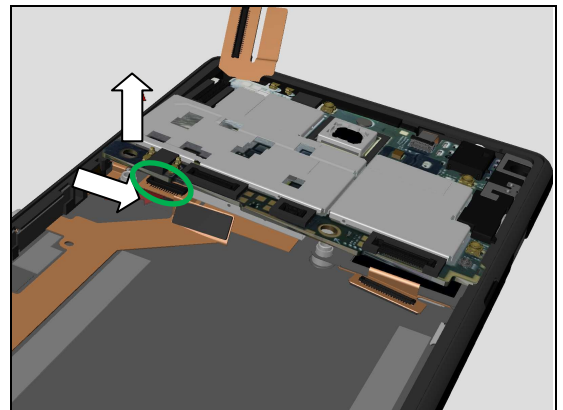
Disassembly

Lift up Left bottom corner of Main PBA carefully by hand about 5mm to show LCM BtB connector under Main PBA.

Be careful! Not to damage Main PBA.

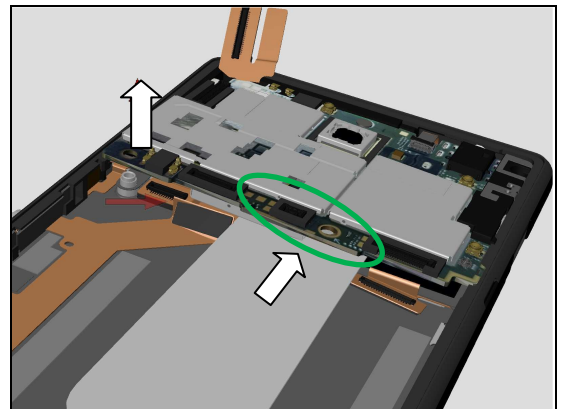


Open the LCM BtB connector under Main PBA.

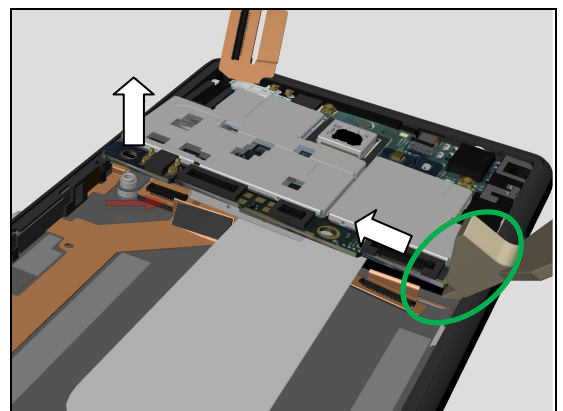


Insert the Flexible Disassembly tool between screw pillar and Main PBA.

Be careful! Not to damage FPC inside.

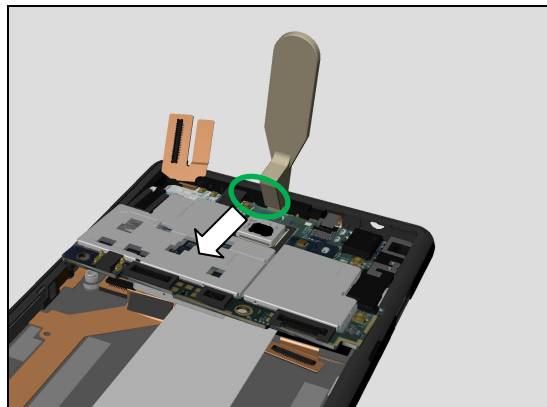


Insert Front Opening Tool as shown to release Main PBA.

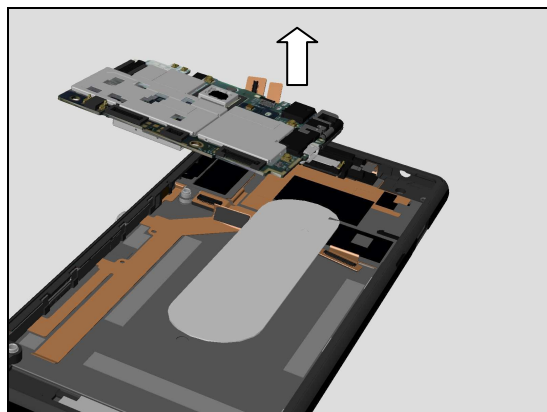


Disassembly

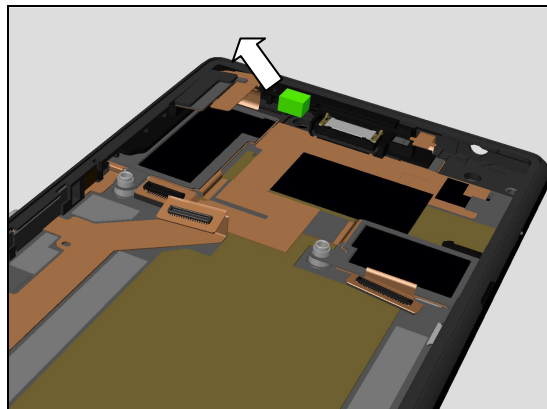
Insert Front Opening Tool as shown to release Main PBA.



Remove the Main PBA.

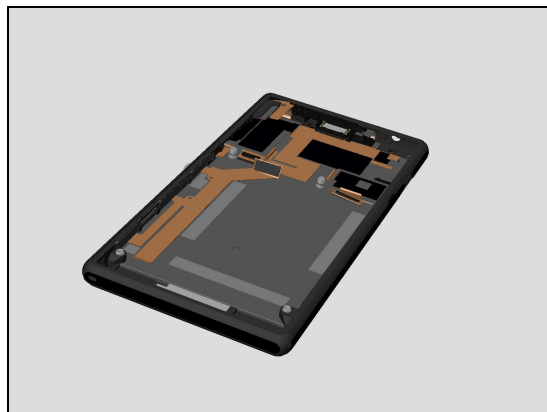


Remove the Foam Front Camera.



3.6 Front Cover LCM TP Assy

Front Cover LCM TP Assy as shown.



4 Replacement

4.1 Battery Cover Assy

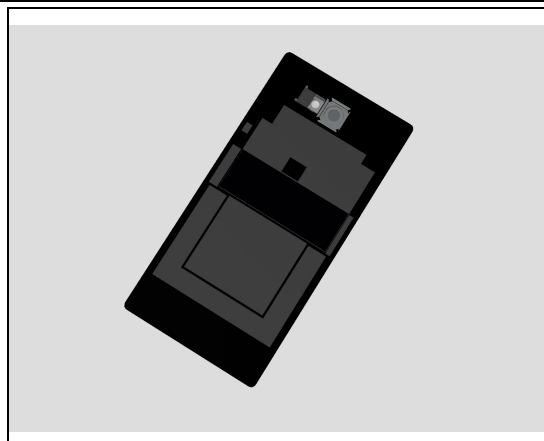
Follow the 3.1 Disassembly instructions!

Prepare a new Battery Cover Assy.

Follow the 5.6 Reassembly instructions!

Note:

1. **New Battery Cover Assy already have BC Adhesive¹ Battery Cover and Flash Lens Adhesive.**
2. **New Battery Cover Assy already have New NFC Protection Film and New NFC black Mylar.**

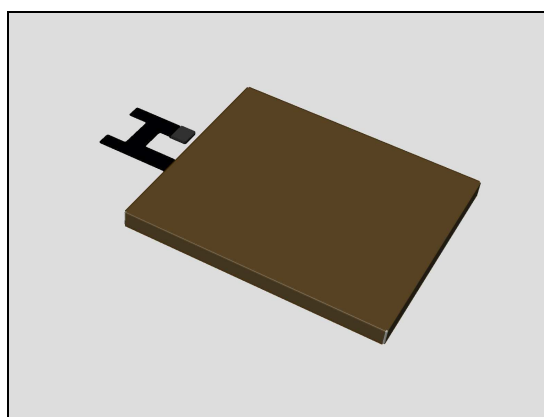


4.2 Embedded Battery Assy

Follow the 3.1 – 3.2 Disassembly instructions!

Prepare a new Embedded Battery Assy.

Follow the 5.5 -- 5.6 Reassembly instructions!



4.3 Main ANT Assy

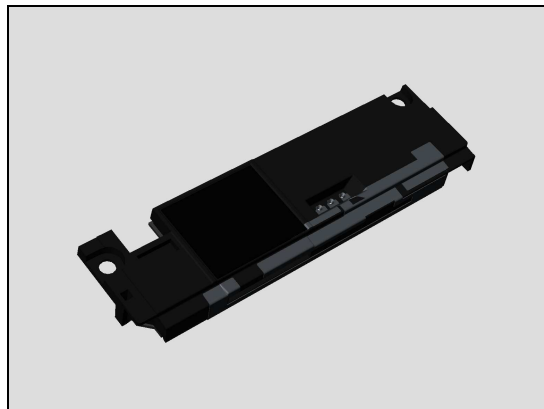
Follow the 3.1 – 3.4 Disassembly instructions!

Follow 4.28 Removal instructions.

Prepare a new Main ANT Assy.

Follow 4.28 Installation instructions.

Follow the 5.3 – 5.6 Reassembly instructions!

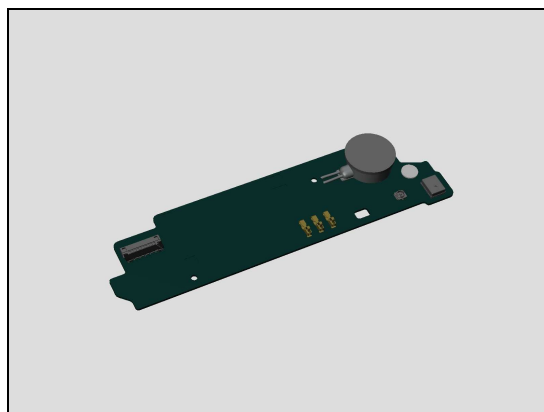


4.4 Sub Board Assy

Follow the 3.1 – 3.4 Disassembly instructions!

Prepare new Sub Board Assy.

Follow the 5.3 – 5.6 Reassembly instructions!



Replacement

4.5 Front Cover LCM TP Assy

Follow the 3.1 – 3.6 Disassembly instructions!

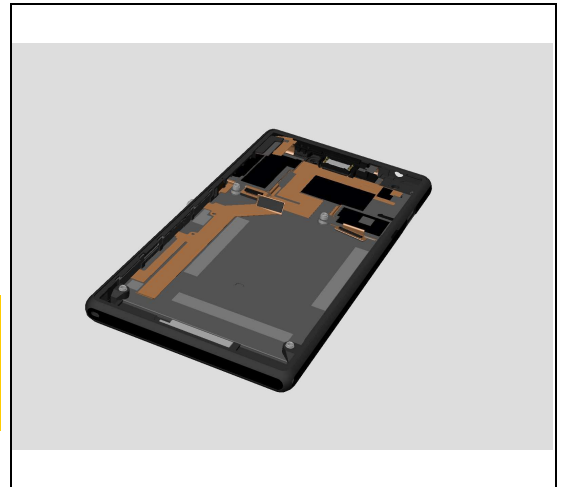
Follow 4.6, 4.30, 4.32, 4.26 Removal instructions.

Prepare a new Front Cover LCM TP Assy.

Follow 4.6, 4.30, 4.32, 4.26 Installation instructions.

Follow the 5.1 – 5.6 Reassembly instructions!

When replacing Front Cover LCM TP Assy or board swap, must do the Calibration for P-sensor, light sensor, accelerometer: 1289-6643 Trouble Shooting Application – mechanical.



4.6 Antenna DIV & DIV Receiver Adhesive

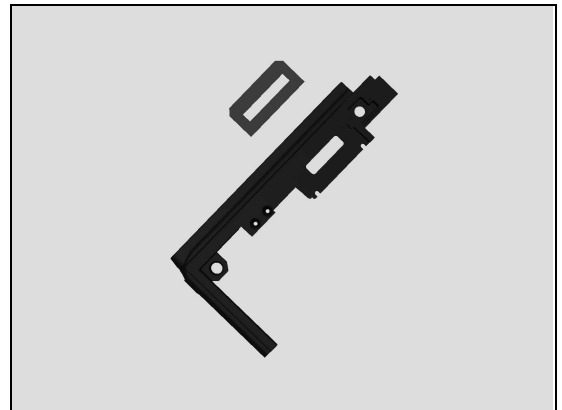
Follow the 3.1 – 3.6 Disassembly instructions!

Carry out the Removal as described below.

Prepare new Antenna DIV and new DIV Receiver Adhesive.

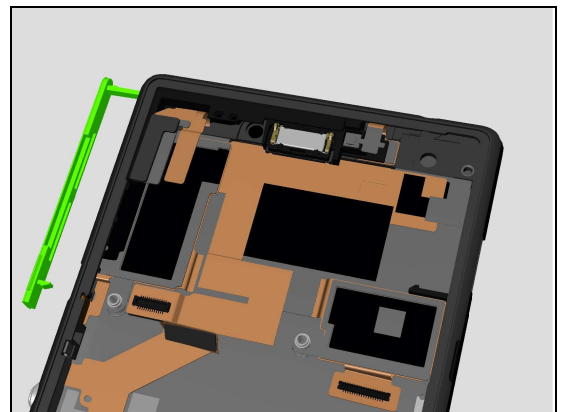
Carry out the Installation as described below.

Follow the 5.1 – 5.6 Reassembly instructions!



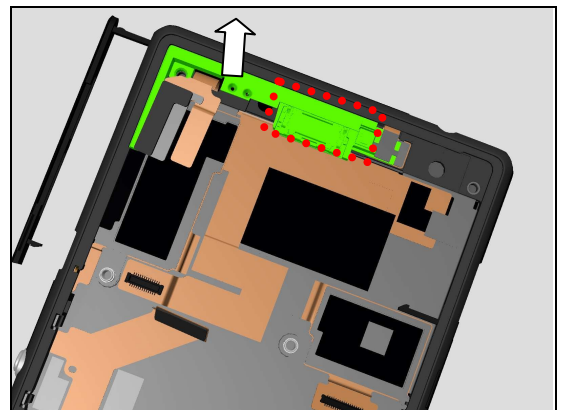
Removal

Open the SIM Cover first.



Remove the Antenna DIV.

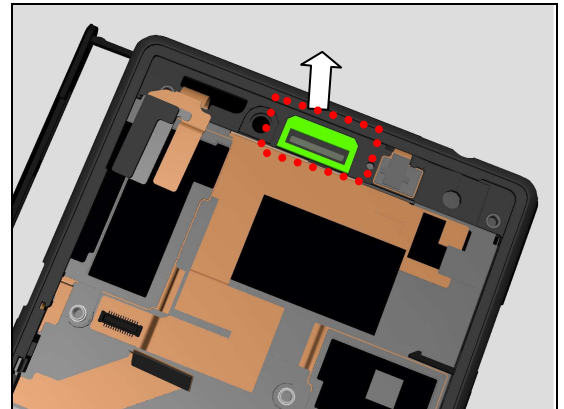
Note: There's DIV Receiver Adhesive under Antenna DIV.



Replacement

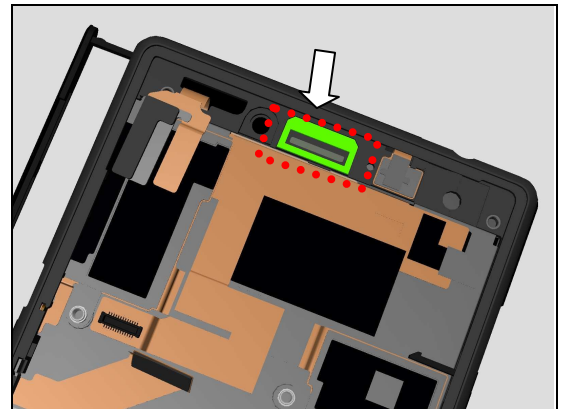
Clean the surplus DIV Receiver Adhesive.

Note: Scrap! Cannot be reused.



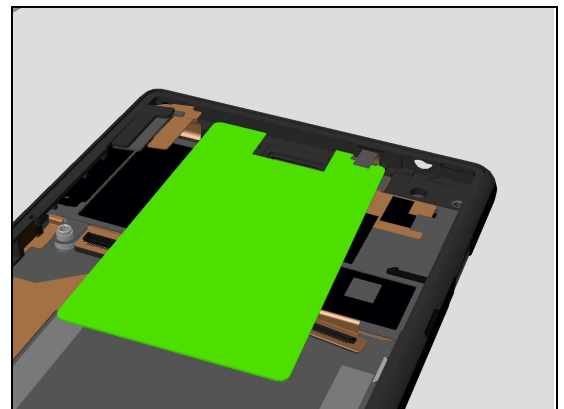
Installation

Place a new DIV Receiver Adhesive first.



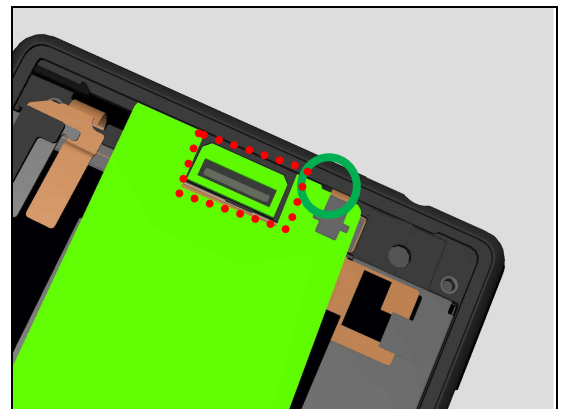
Insert Flexible Assemble Tool DIV as shown.

Note: it is mandatory to use this tool to assemble Antenna DIV to ensure its assembly quality.



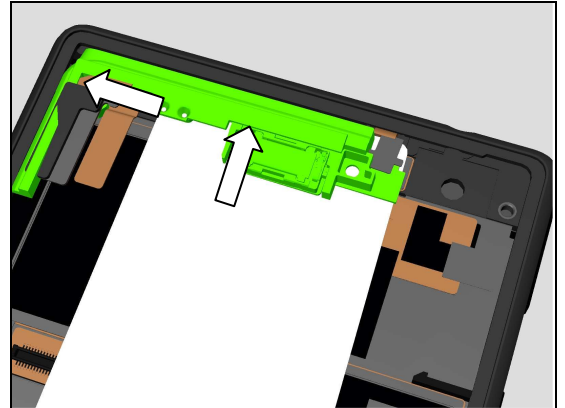
Use the tool's right corner and Front Cover pillar as shown to fix the tool's position.

Note: new DIV Receiver Adhesive is at the centre of tool.

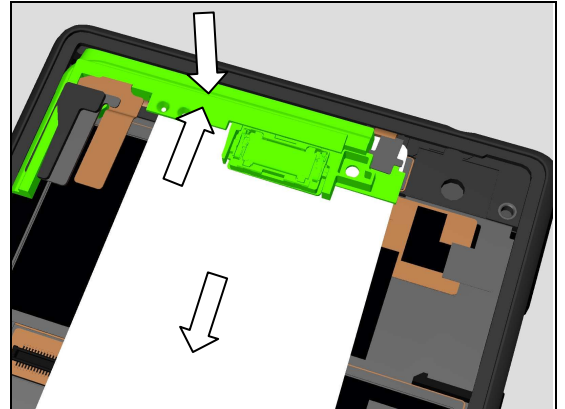


Replacement

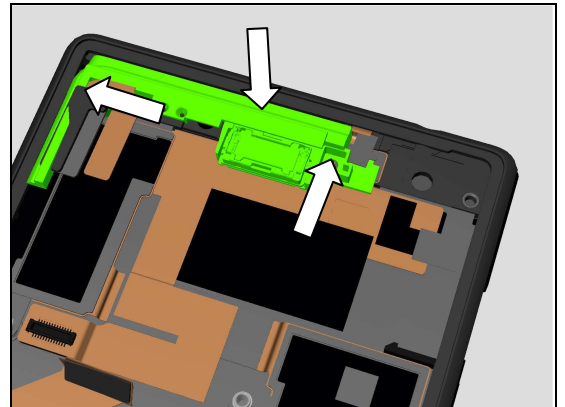
Insert Antenna DIV tightly into its position as shown.



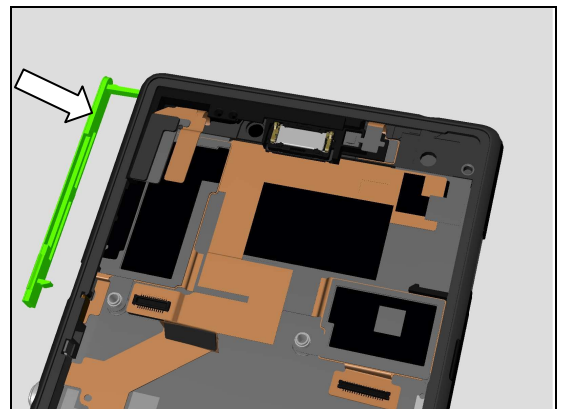
Then pull out the Flexible Assemble tool DIV while pressing Antenna DIV tightly.



Press down Antenna DIV.



Close SIM Cover.



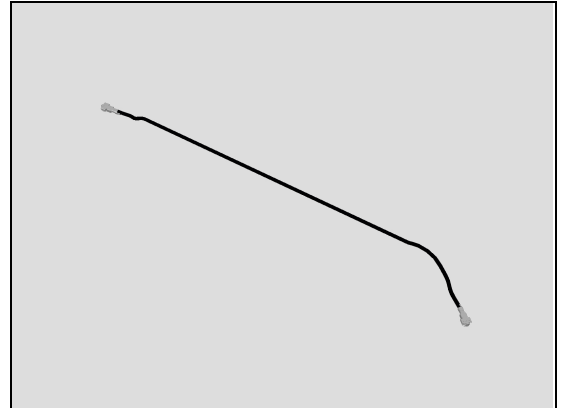
Replacement

4.7 RF Cable

Follow the 3.1 – 3.4 Disassembly instructions!

Prepare new RF Cable.

Follow the 5.4 – 5.6 Reassembly instructions!



4.8 Foam Front Camera

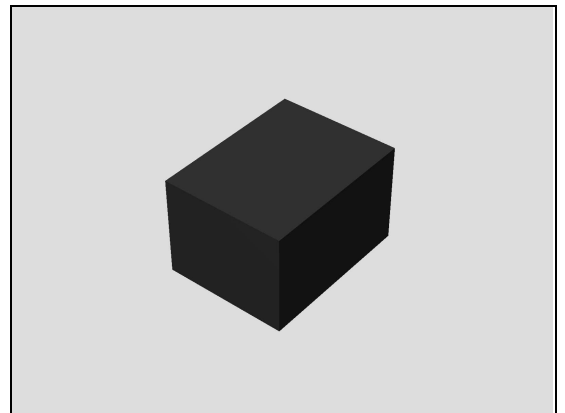
Follow the 3.1 Disassembly instructions!

Carry out the Removal as described below.

Prepare a new Foam Front Camera.

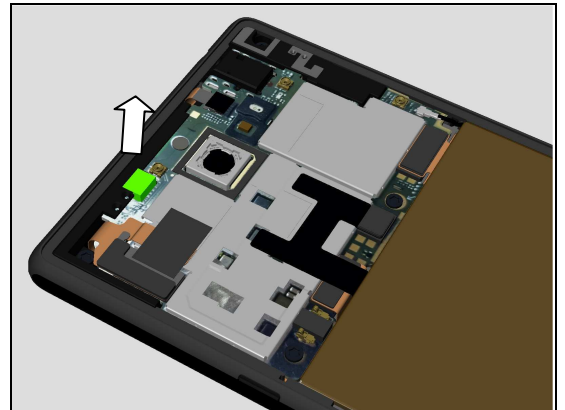
Carry out the Installation as described below.

Follow the 5.6 Reassembly instructions!



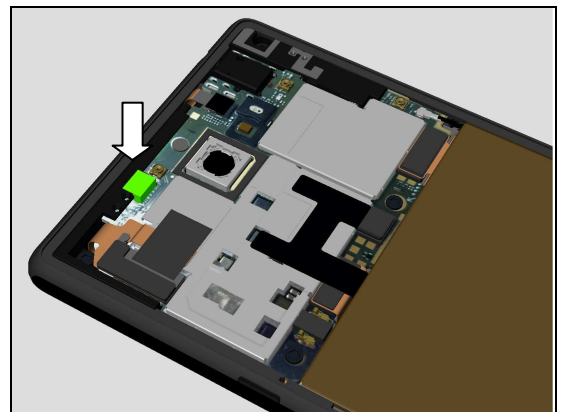
Removal

Remove the Foam Front Camera.



Installation

Place a new Foam Front Camera into its cavity.



Replacement

4.9 ESD Cloth TP BTB

Follow the 3.1 Disassembly instructions!

Carry out the Removal as described below.

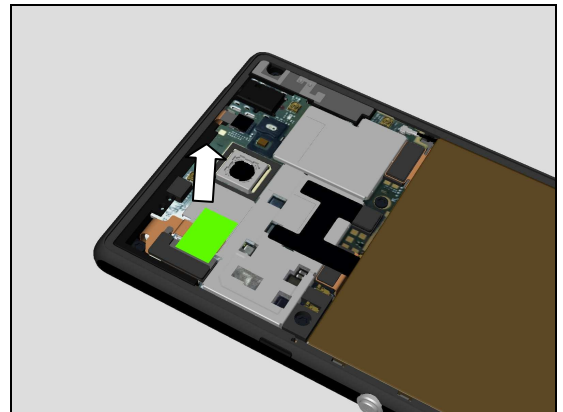
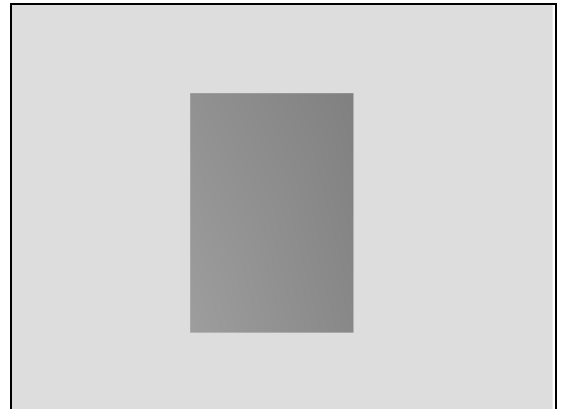
Prepare a new ESD Cloth TP BTB.

Carry out the Installation as described below.

Follow the 5.6 Reassembly instructions!

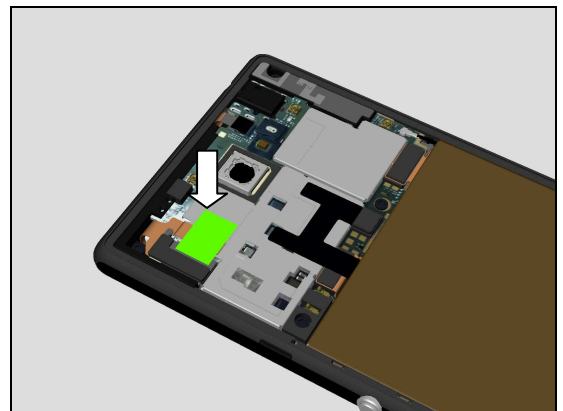
Removal

Remove the ESD Cloth TP BTB.



Installation

Place a new ESD Cloth TP BTB.



4.10 Film on PL ZIF

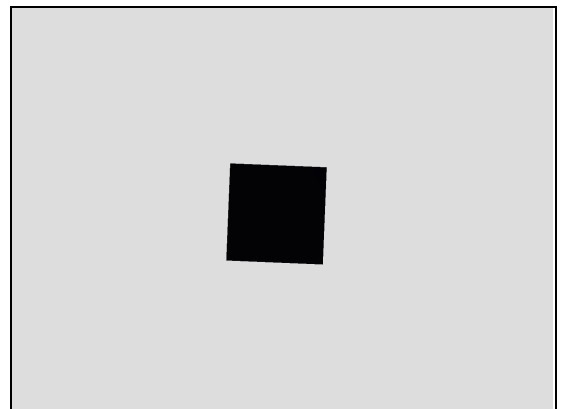
Follow the 3.1 Disassembly instructions!

Carry out the Removal as described below.

Prepare a new Film on PL ZIF.

Carry out the Installation as described below

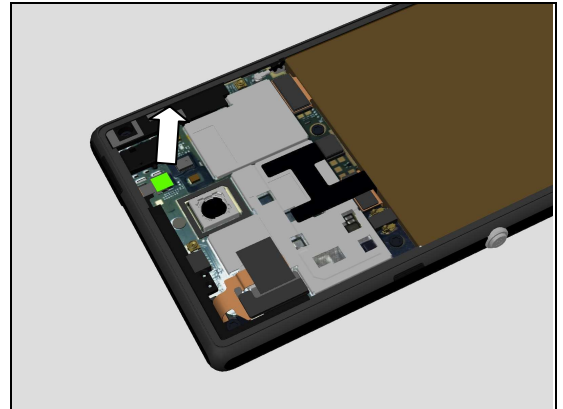
Follow the 5.6 Reassembly instructions!



Replacement

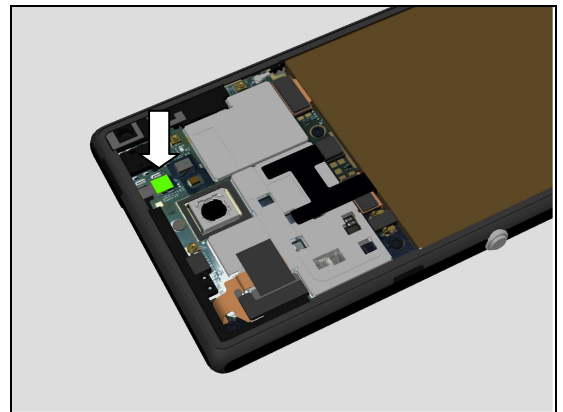
Removal

Remove the Film on PL ZIF.



Installation

Place a new Film on PL ZIF.



4.11 Screw TORX L3.3

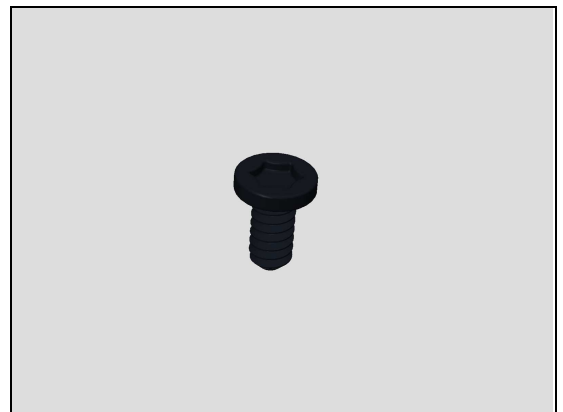
Follow the 3.1 Disassembly instructions!

Carry out the Removal as described below.

Prepare a new Screw TORX L3.3.

Carry out the Installation as described below

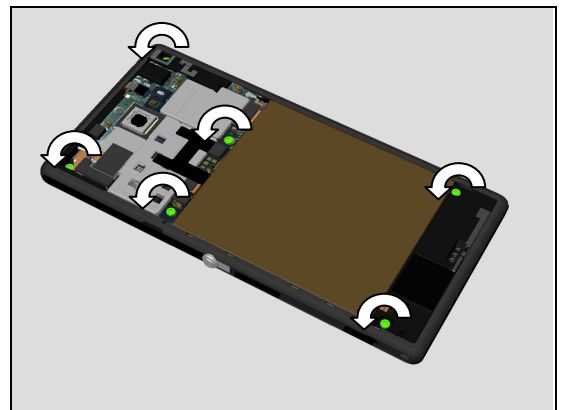
Follow the 5.6 Reassembly instructions!



Removal

Remove these six Screws by using a screwdriver with Bits (T5).

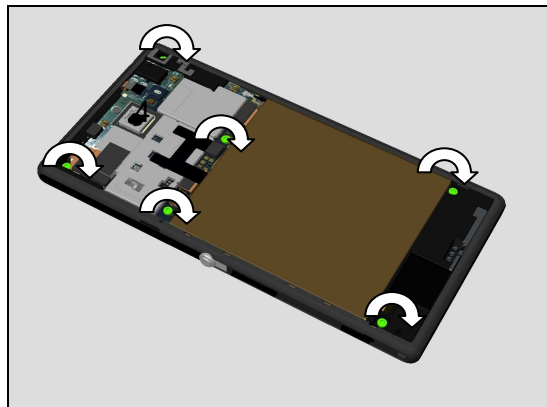
Scrap! Not to be reused!



Replacement

Installation

Apply 12 N.cm torque when tightening these six Screws with Bits (T5) as shown.

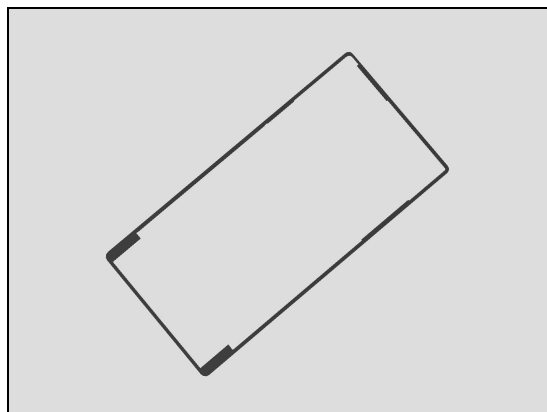


4.12 BC Adhesive1 Battery Cover

Follow the 3.1 Disassembly instructions!

Prepare a new BC Adhesive1 Battery Cover.

Follow the 5.6 Reassembly instructions!

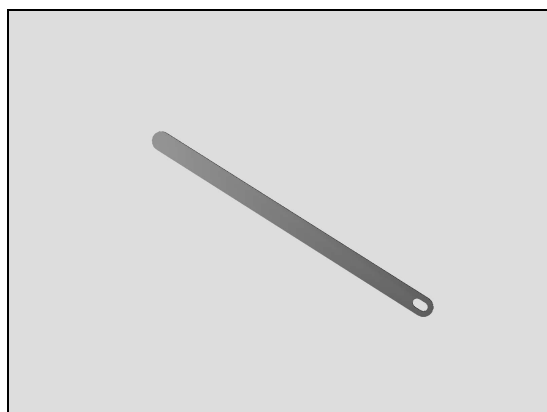


4.13 Speaker Mesh

Carry out following Removal instructions!

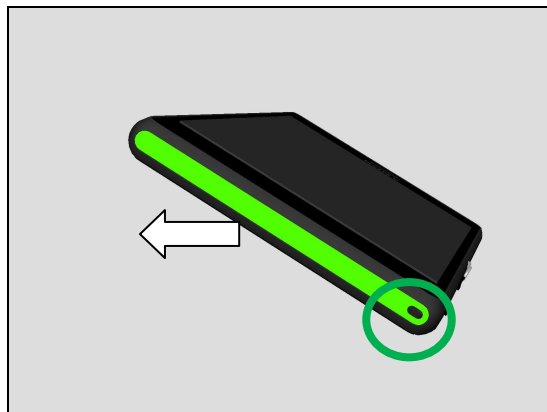
Prepare a Speaker Mesh.

Carry out following Installation instructions!



Removal

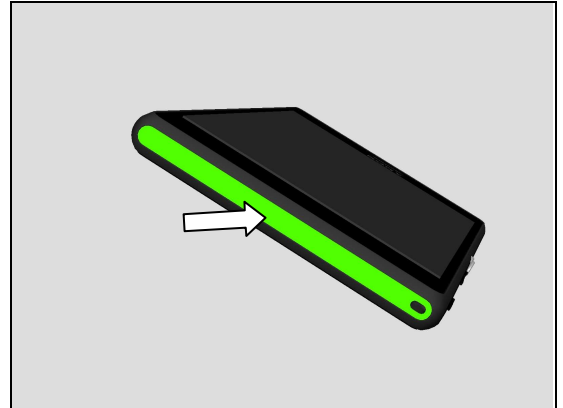
Remove the Speaker Mesh from right side first.



Replacement

Installation

Attach a new Speaker Mesh and press it carefully.



4.14 BC Adhesive7 NFC Spring

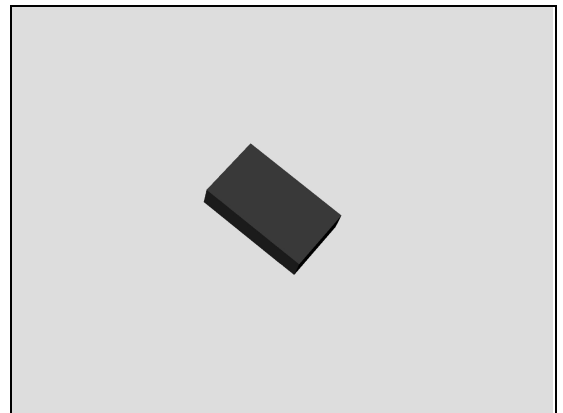
Follow the 3.1 Disassembly instructions!

Carry out the Removal as described below.

Prepare a new BC Adhesive7 NFC Spring.

Carry out the Installation as described below

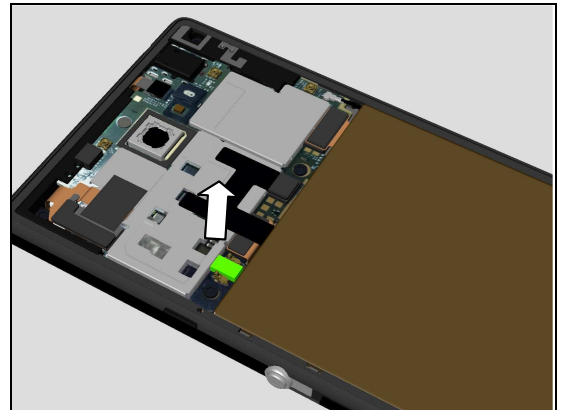
Follow the 5.6 Reassembly instructions!



Removal

Remove the BC Adhesive7 NFC Spring.

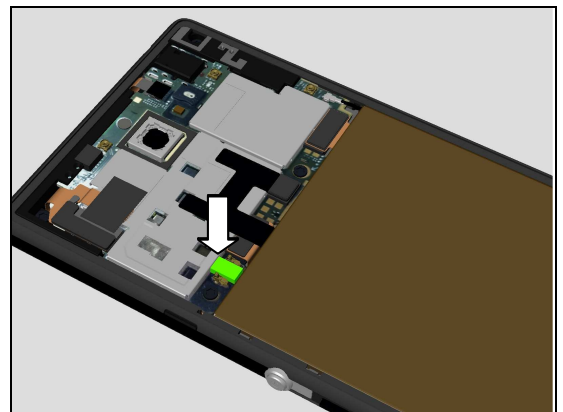
Note: Do not touch NFC Spring.



Installation

Place a new BC Adhesive7 NFC Spring.

Note: Do not touch NFC Spring.



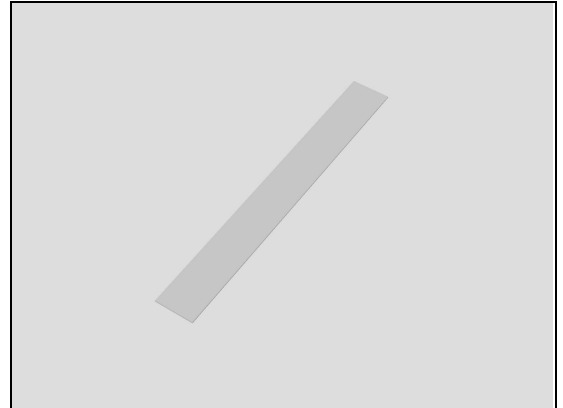
Replacement

4.15 BAT Adhesive1.2.3 Battery

Follow the 3.1-3.2 Disassembly instructions!

Prepare a new BAT Adhesive1.2.3 Battery.

Follow the 5.5-5.6 Reassembly instructions!

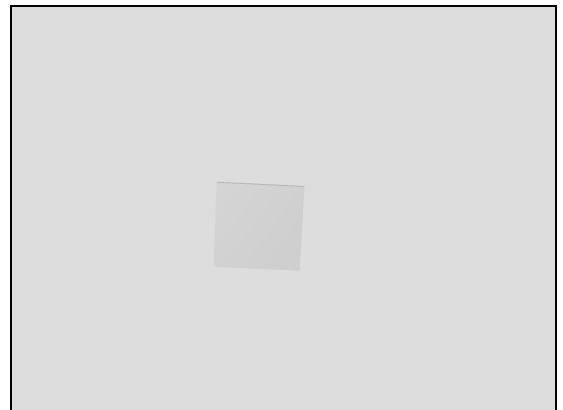


4.16 BAT Adhesive4 Camera key

Follow the 3.1-3.2 Disassembly instructions!

Prepare a new BAT Adhesive4 Camera key.

Follow the 5.5-5.6 Reassembly instructions!



4.17 BAT Adhesive5 Power key

Follow the 3.1-3.2 Disassembly instructions!

Prepare a new BAT Adhesive5 Power key.

Follow the 5.5-5.6 Reassembly instructions!



4.18 Front Camera Assy

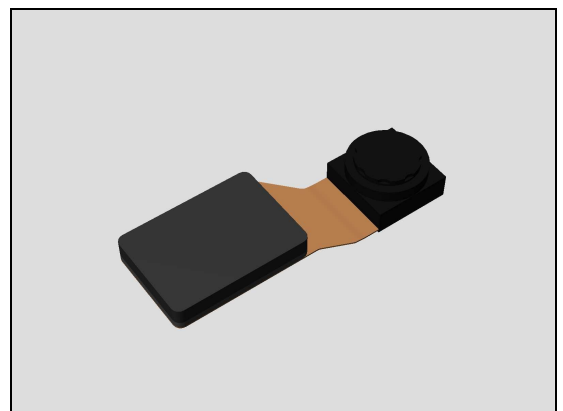
Follow the 3.1-3.6 Disassembly instructions!

Carry out the Removal as described below.

Prepare a new Front Camera Assy.

Carry out the Installation as described below.

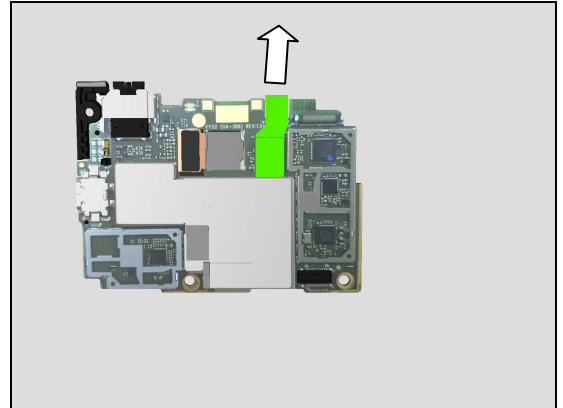
Follow the 5.1-5.6 Reassembly instructions!



Replacement

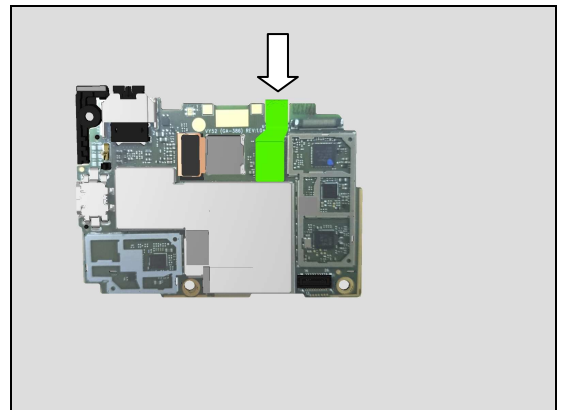
Removal

Open its BtB connector and remove Front Camera Assy.



Installation

Place a new Front Camera Assy in the correct position as shown in the picture; ensure its BtB connector well assembled.



4.19 Main Camera

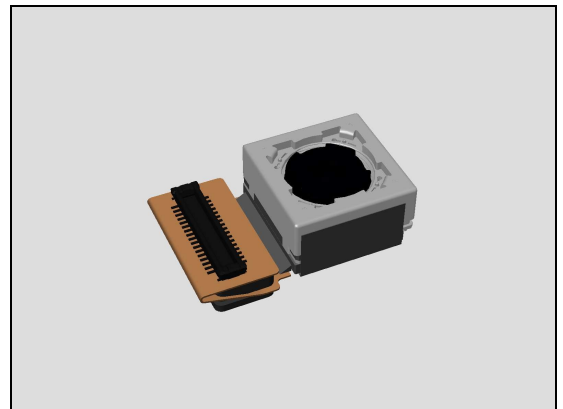
Follow the 3.1-3.6 Disassembly instructions!

Carry out the Removal as described below.

Prepare a new Main Camera.

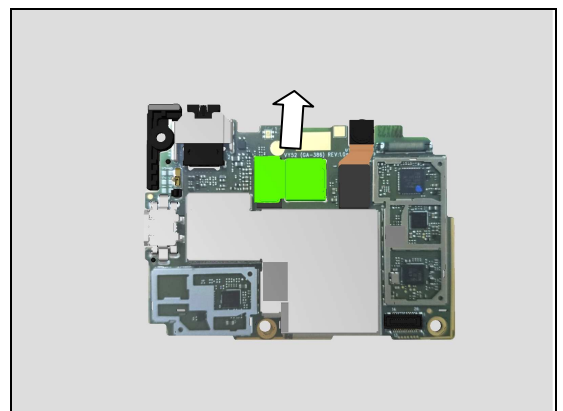
Carry out the Installation as described below.

Follow the 5.1-5.6 Reassembly instructions!



Removal

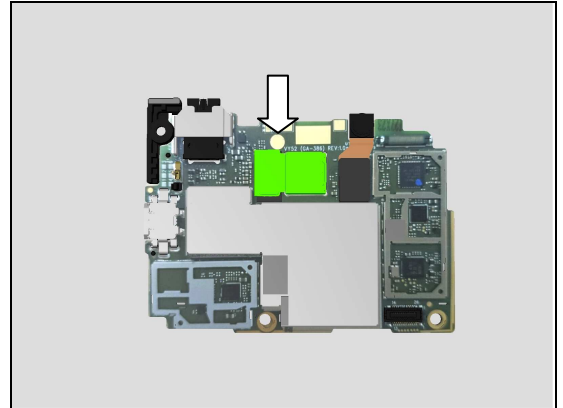
Open its BtB connector and remove Main Camera.



Replacement

Installation

Place a new Main Camera in the correct position as shown in the picture; ensure its BtB connector well assembled.



4.20 Antenna BT WIFI GPS

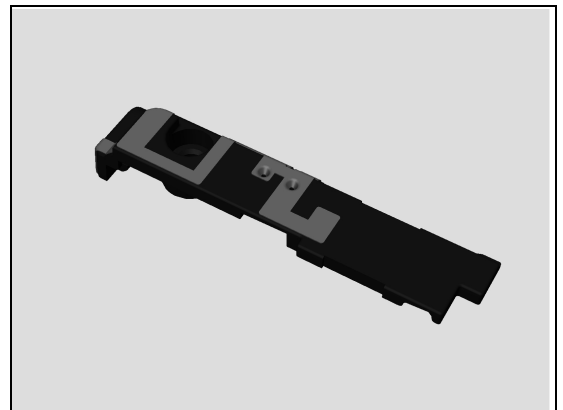
Follow the 3.1-3.6 Disassembly instructions!

Carry out the Removal as described below.

Prepare a new Antenna BT WIFI GPS.

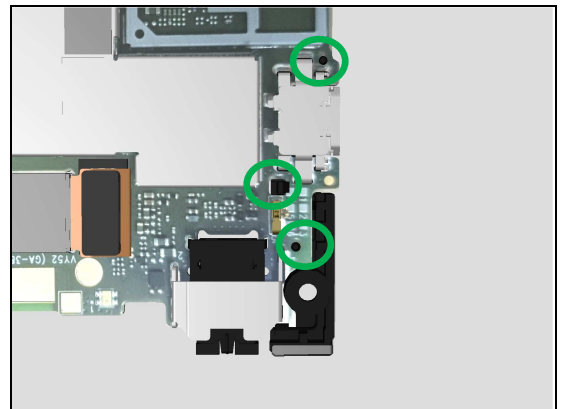
Carry out the Installation as described below.

Follow the 5.1-5.6 Reassembly instructions!

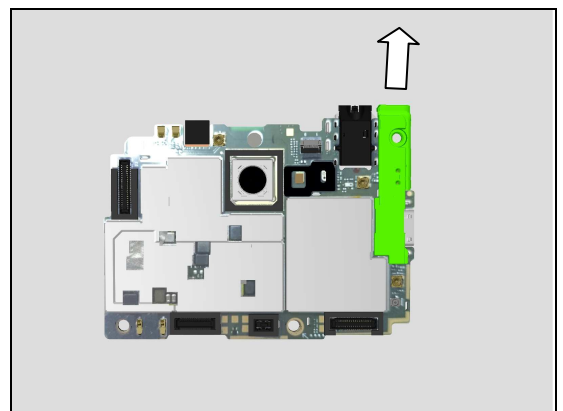


Removal

Push the hook of the Antenna BT WIFI GPS from Main PBA.



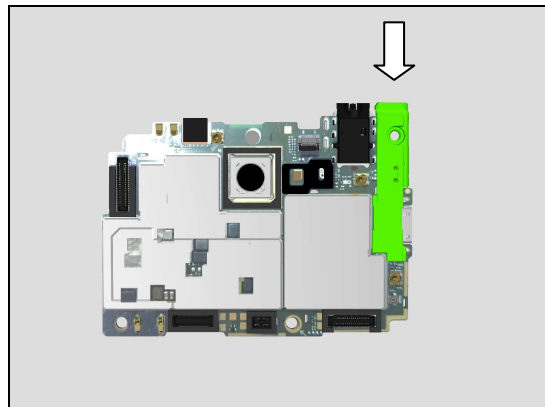
Remove the Antenna BT WIFI GPS from Main PBA.



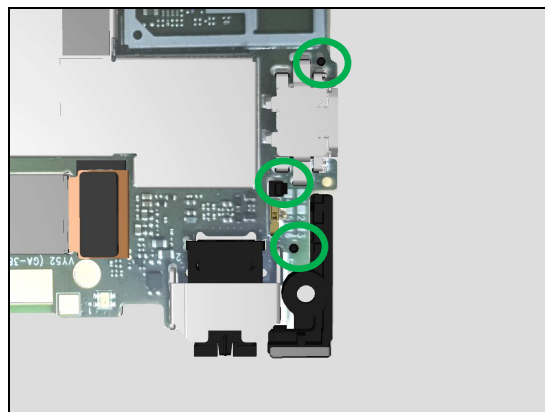
Replacement

Installation

Place a new Antenna BT WIFI GPS in the correct position as shown in the picture;



Ensure the its hook and position pillar as shown in the picture are well assembled;

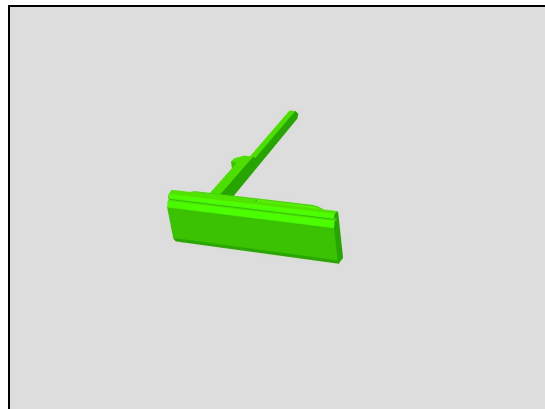


4.21 USB Cover

Carry out the Removal as described below.

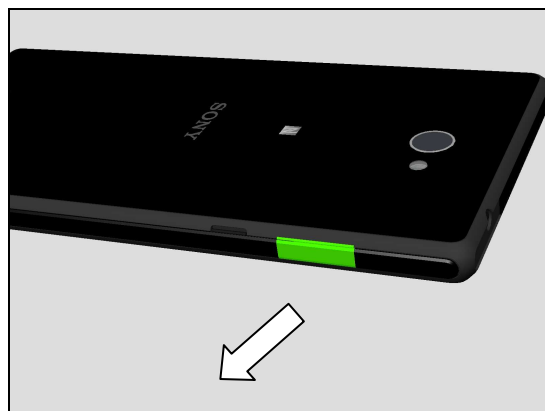
Prepare a new USB Cover.

Carry out the Installation as described below.



Removal

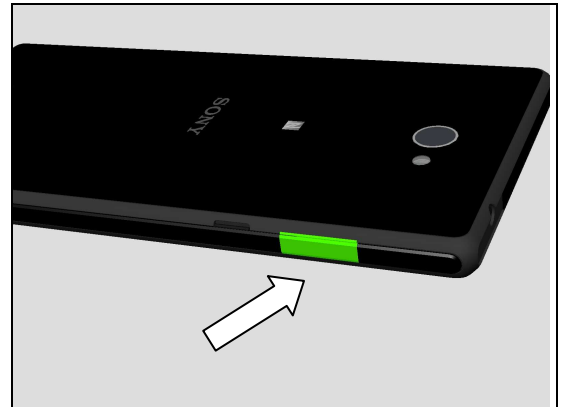
Remove the USB Cover.



Replacement

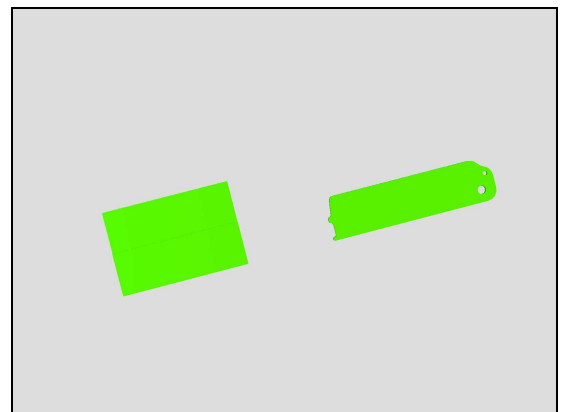
Installation

Place the new USB Cover in the correct position as shown.
Insert its tail by tweezers first.
Then press it by hand to secure its attachment.



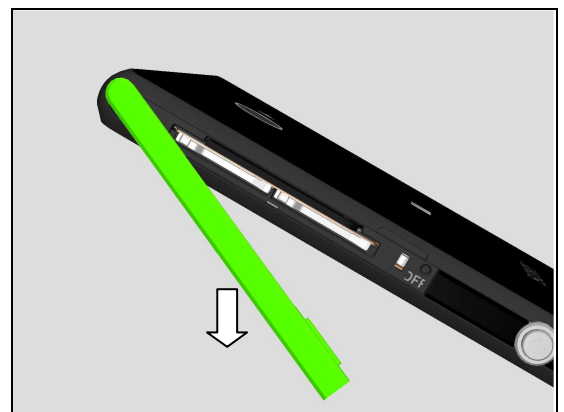
4.22 Core Unit Label & Tray A thick Blank

Carry out the Removal as described below.
Prepare a new Core Unit Label & Tray A thick Blank.
Carry out the Installation as described below.

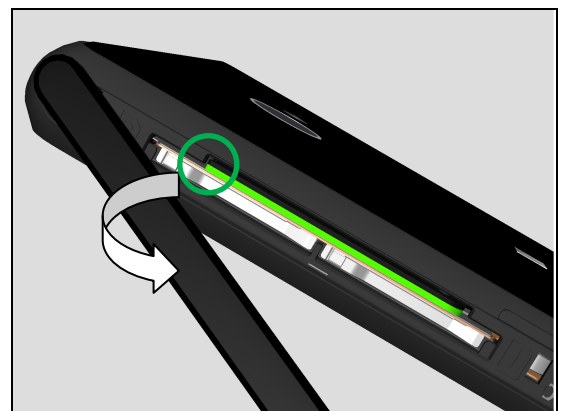


Removal

Open the SIM Cover first to show Tray A.



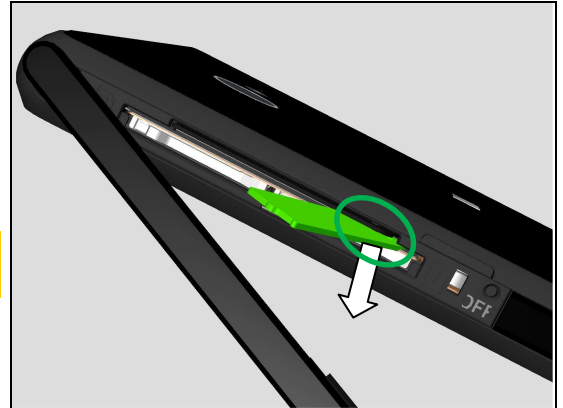
Pull out Tray A from top side as shown.



Replacement

Hold Tray A by hand and press its bottom side down about 1mm as shown to release its bottom side from its Pillar.

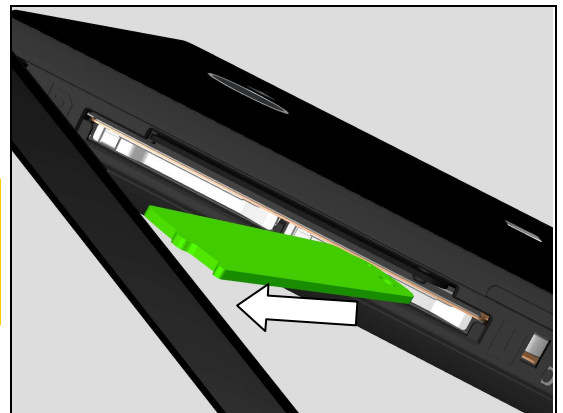
Note: SIM Connector will be pressed deformed down about 1mm to release Tray A from its pillar.



Remove the Tray A.

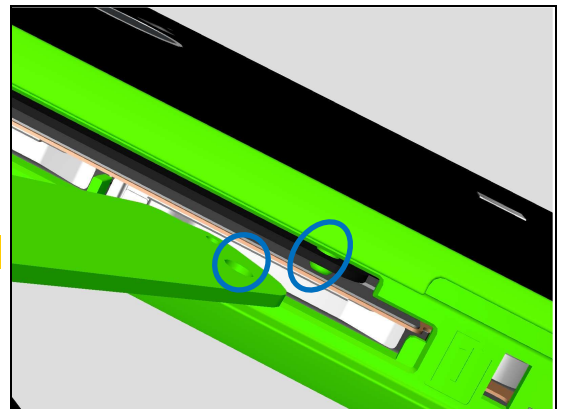
Note: Tray A from production line is laser Print Label content.

For Repaired phones, use Tray A thick Blank Pasting Core Unit Label (Paper, Zebra printer).



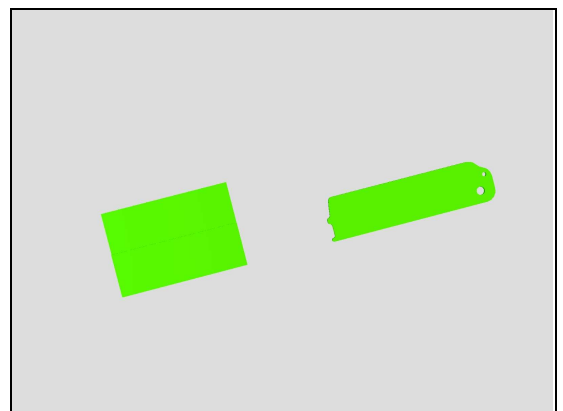
Tray A hole and its Pillar as shown in picture.

Note: Tray A is thicker.



Installation

Prepare the Core Unit Label and Tray A thick Blank.

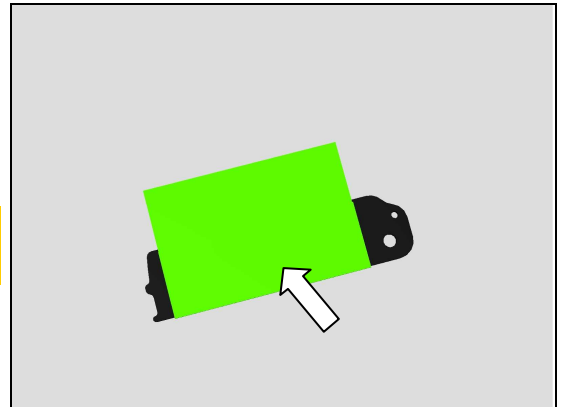


Replacement

Attach a new Core Unit Label carefully as shown on front side of Tray A thick Blank first.

Only one Label is attached.

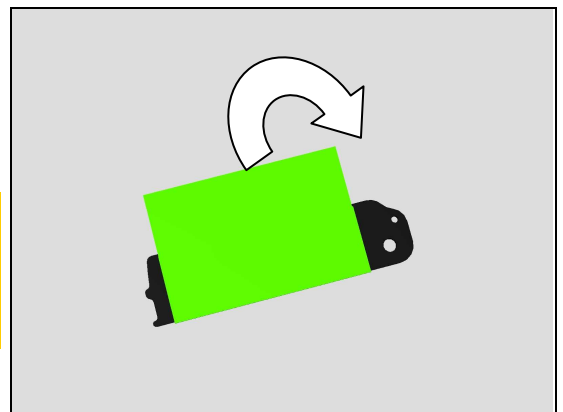
Pay attention that the part is in its proper position!



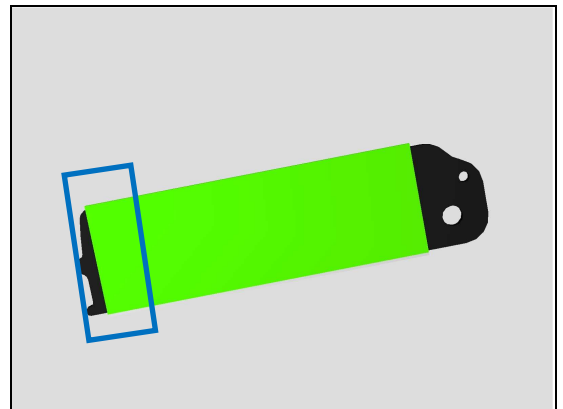
Attach Core Unit Label carefully as shown on back side of Tray A thick Blank then.

Pay attention about Tray A blank direction as shown!

Core Unit Label can only be rotated up direction to paste it on back side of Tray A blank.

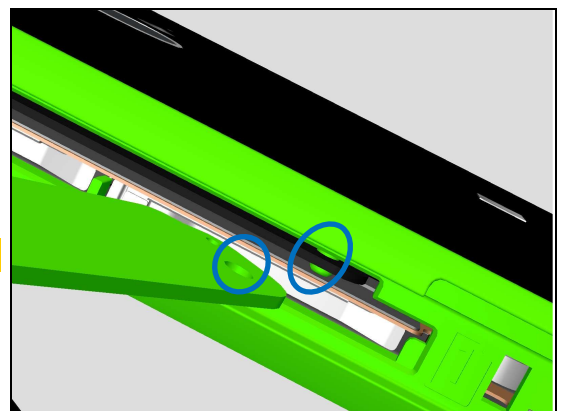


Try to align Core Unit Label with the Left side of Tray A thick Blank as shown.



Tray A hole and its Pillar as shown in picture.

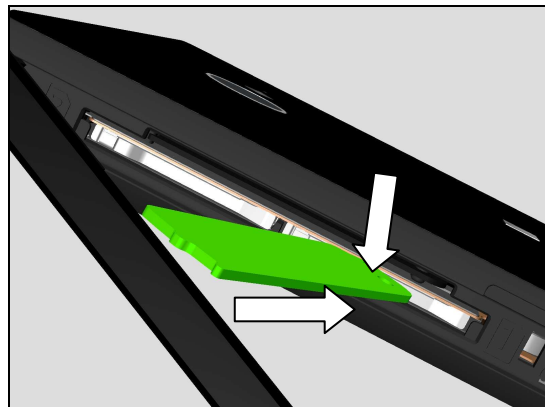
Note: Tray A is thicker.



Replacement

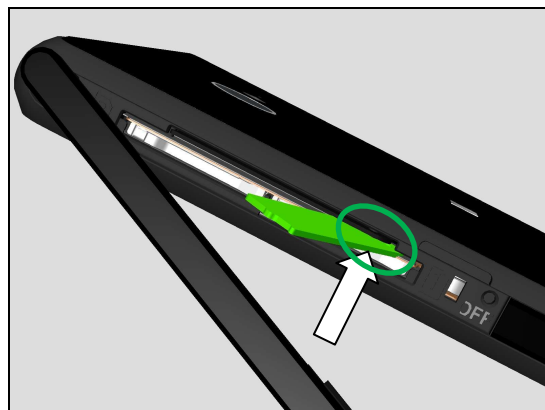
Insert Tray A thick Blank with Core Unit Label above SIM connector and press its bottom side down about 1mm.

Note: *SIM Connector will be pressed deformed down about 1mm to insert Tray A under its pillar.*

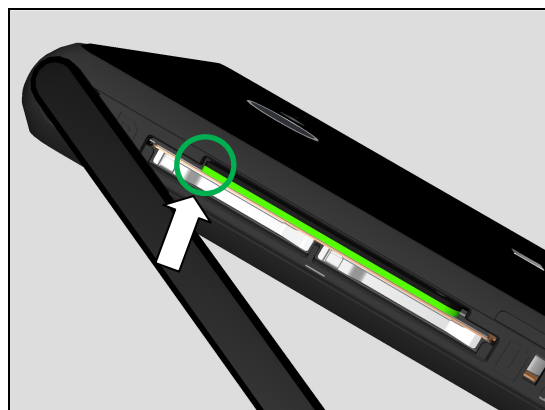


Assemble the hole of Tray A thick Blank with Core Unit Label onto its pillar.

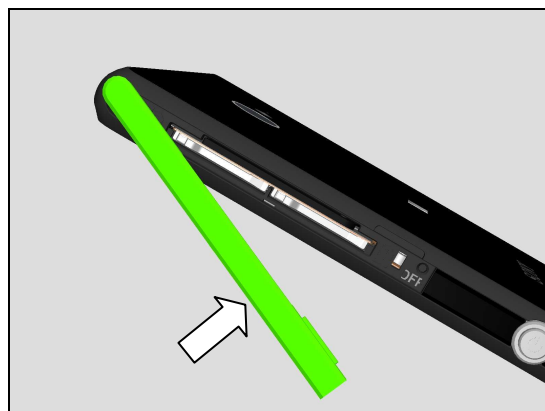
Note: *Rotate this part several times to ensure its hole through its pillar correctly.*



Close Tray A thick Blank with Core Unit Label into its position as shown.



Close the SIM Cover.



Replacement

4.23 Tray B thin Laser Print

Follow the 4.30 Removal instructions!

Carry out the Removal as described below.

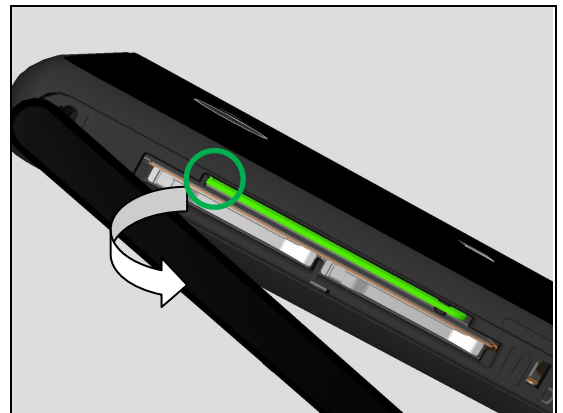
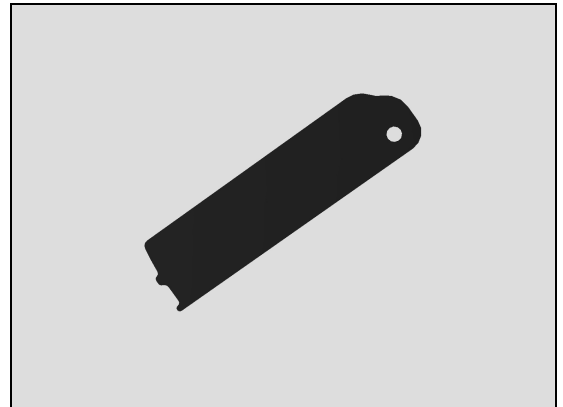
Prepare a new Tray B thin Laser Print.

Carry out the Installation as described below.

Follow the 4.30 Installation instructions!

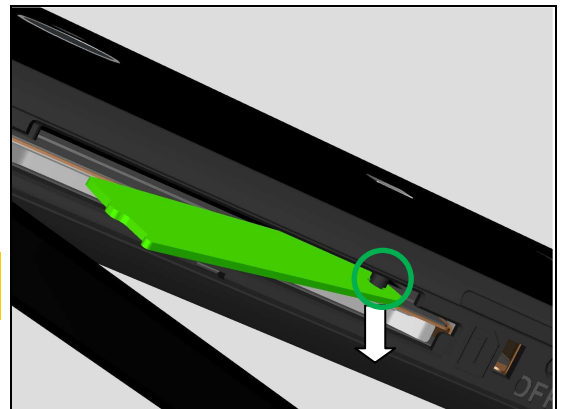
Removal

Pull out Tray B from top side as shown.



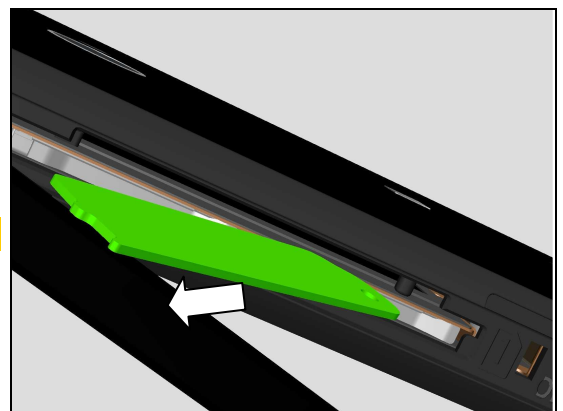
Hold Tray B thin Laser Print by hand and press its bottom side down about 1mm as shown to release its bottom side from its Pillar.

Note: SIM Connector will be pressed deformed down about 1mm to release Tray B from its pillar.



Remove the Tray B thin Laser Print.

Note: Tray B is thinner.

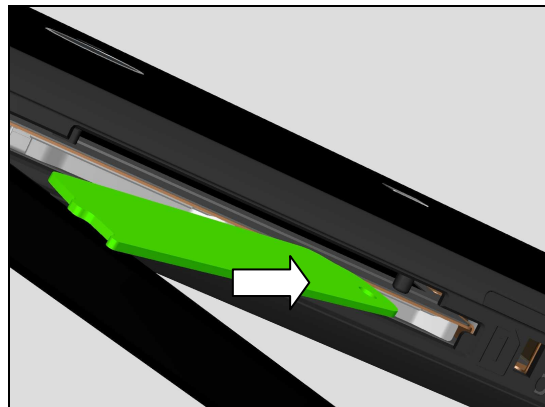


Replacement

Installation

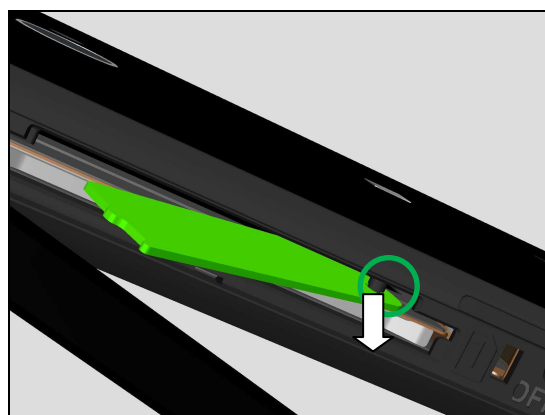
Prepare new Tray B thin Laser Print.

Note: There are 2 variants of Tray B thin Laser Print for common Label content according to model name.



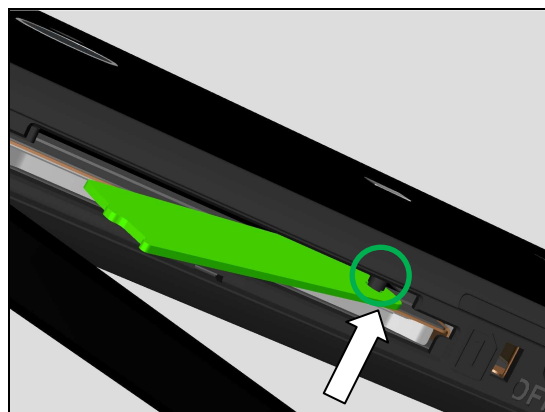
Insert Tray B thin Laser Print above SIM connector and press its bottom side down about 1mm.

Note: SIM Connector will be pressed deformed down about 1mm to insert Tray B under its pillar.

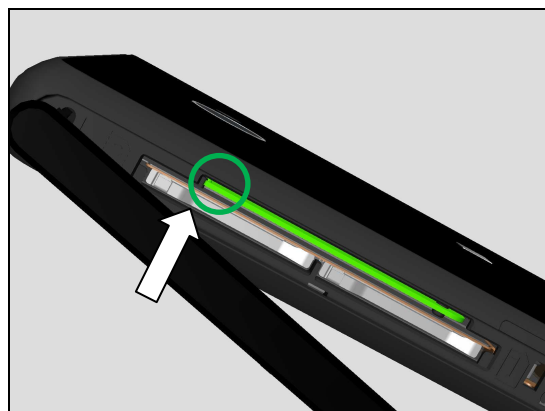


Assemble the hole of Tray B thin Laser Print onto its pillar.

Note: Rotate this part several times to ensure its hole through its pillar correctly.



Close Tray B thin Laser Print into its position as shown.



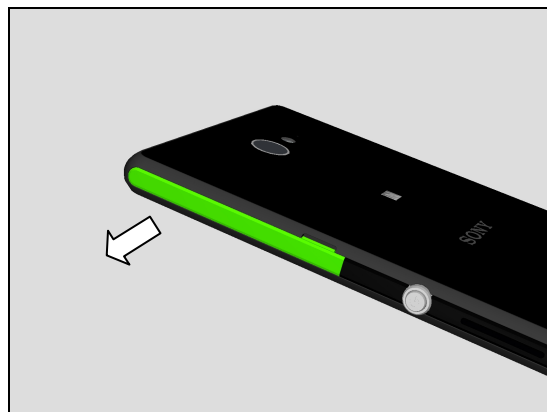
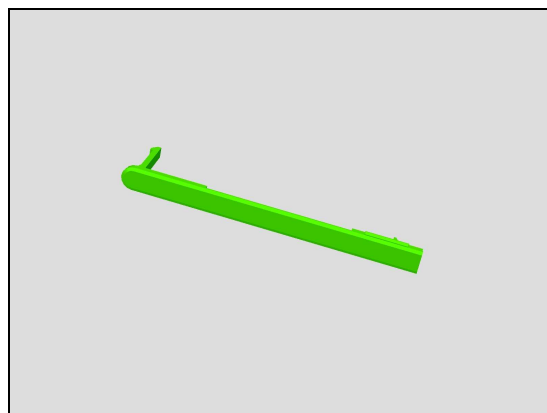
Replacement

4.24 SIM Cover

Carry out the Removal as described below.
Prepare a new SIM Cover.
Carry out the Installation as described below.

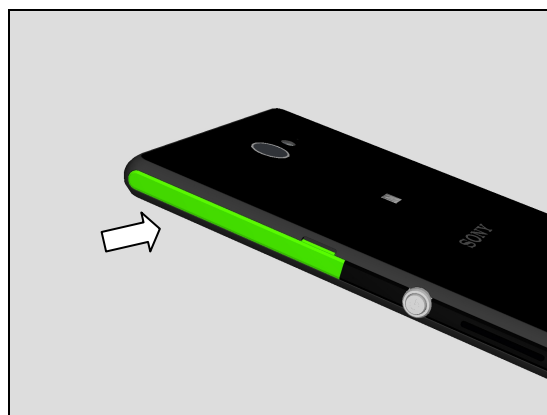
REMOVAL

Remove the SIM Cover as shown.



INSTALLATION

Place a new SIM Cover in the correct position as shown.
Insert the tail of SIM Cover first using Tweezers.
Close the SIM Cover



Replacement

4.25 Audio Jack Cover

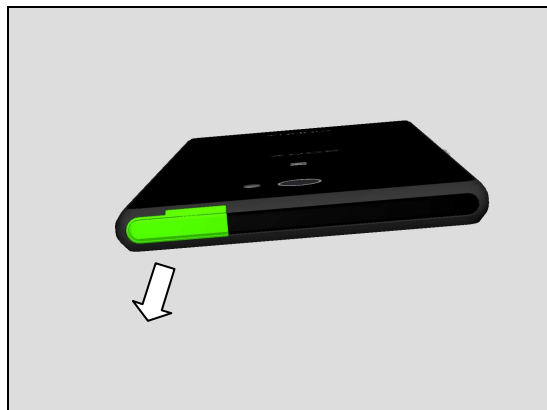
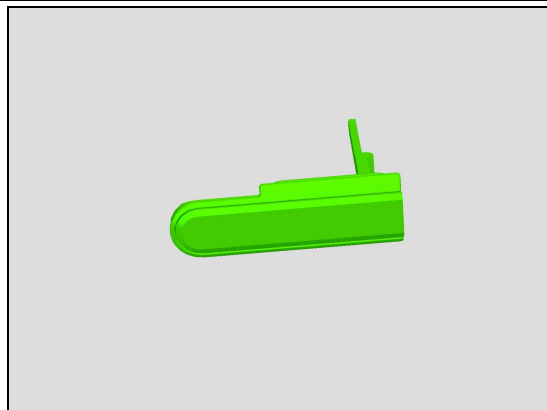
Carry out the Removal as described below.

Prepare a new Audio Jack Cover.

Carry out the Installation as described below.

REMOVAL

Remove the Audio Jack Cover.

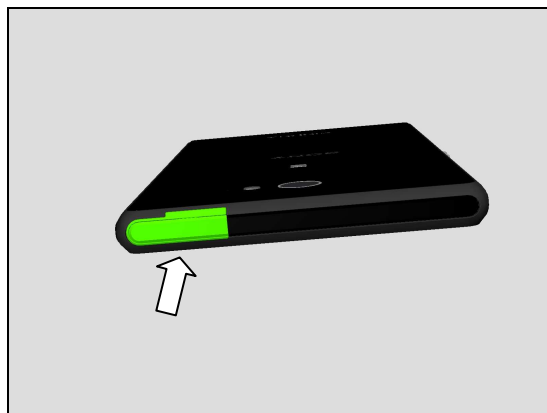


INSTALLATION

Place a new Audio Jack Cover in the correct position as shown.

Insert the tail of Audio Jack Cover first using Tweezers.

Close the Audio Jack Cover.



Replacement

4.26 WP 1ST MIC Adhesive

Follow the 3.1-3.4 Disassembly instructions!

Carry out the Removal as described below.

Prepare a new WP 1ST MIC Adhesive.

Carry out the Installation as described below.

Follow the 5.3-5.6 Reassembly instructions!

REMOVAL

Remove the surplus WP 1ST MIC Adhesive on Sub Board Assy.

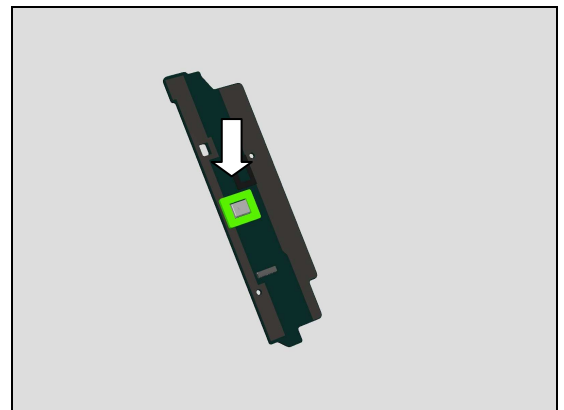
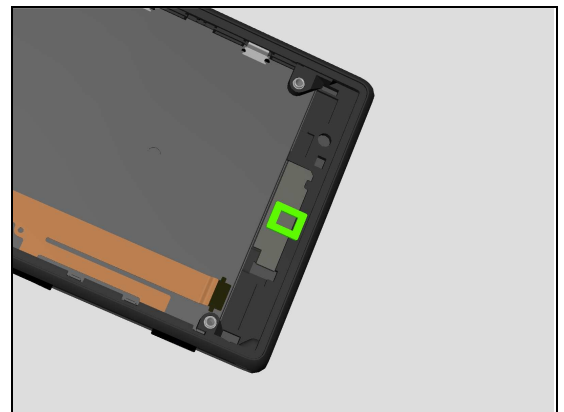
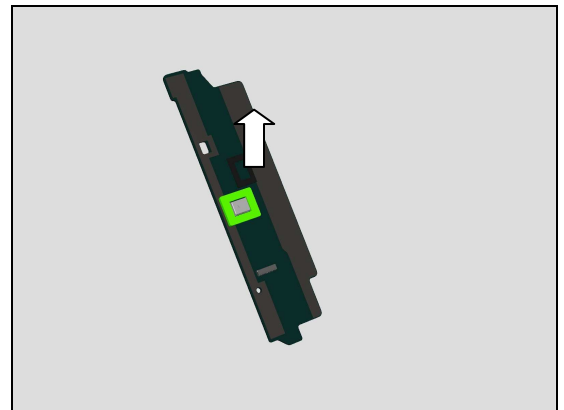
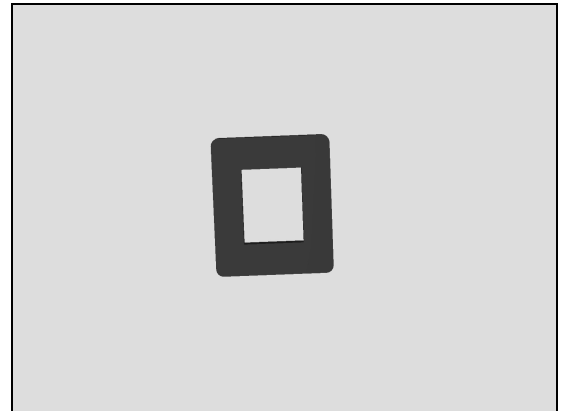
Note: Scrap! Can't be reused.

Remove the surplus WP 1ST MIC Adhesive left on Front Cover LCM TP Assy.

Note: Scrap! Can't be reused.

INSTALLATION

Place a new WP 1ST MIC Adhesive on Sub Board Assy.



Replacement

4.27 Water Intrusion Label

Follow the 3.1 Disassembly instructions!

Carry out the Removal as described below.

Prepare a new Water Intrusion Label.

Carry out the Installation as described below.

Follow the 5.6 Reassembly instructions!

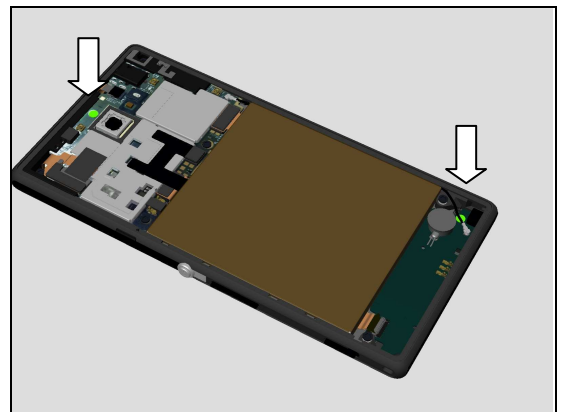
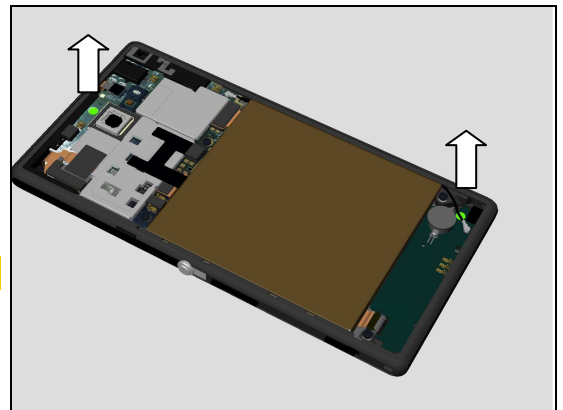
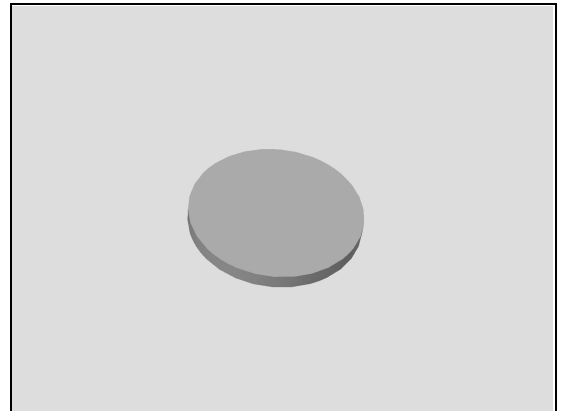
REMOVAL

Peel off the Water Intrusion Label.

Scrap! Not to be reused!

INSTALLATION

Place a new Water Intrusion Label in the correct position as shown in the picture.



Replacement

4.28 Speaker & Speaker Adhesive

Follow the 3.1 – 3.4 Disassembly instructions!
 Carry out the Removal as described below.
 Prepare a new Speaker and Speaker Adhesive.
 Carry out the Installation as described below.
Follow the 5.3 – 5.6 Reassembly instructions!

REMOVAL

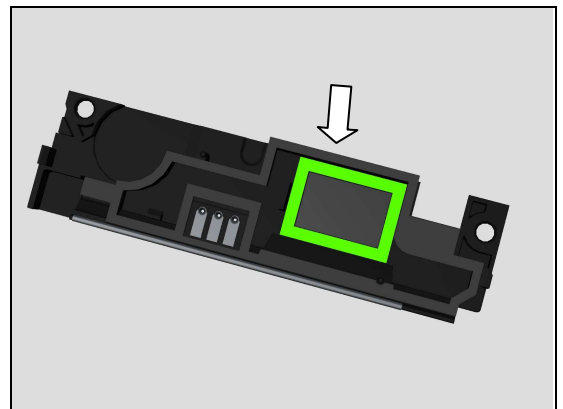
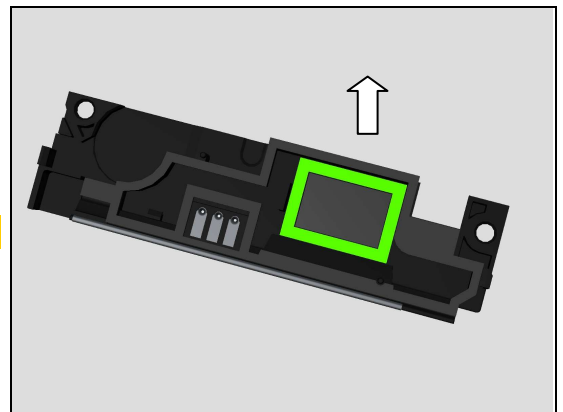
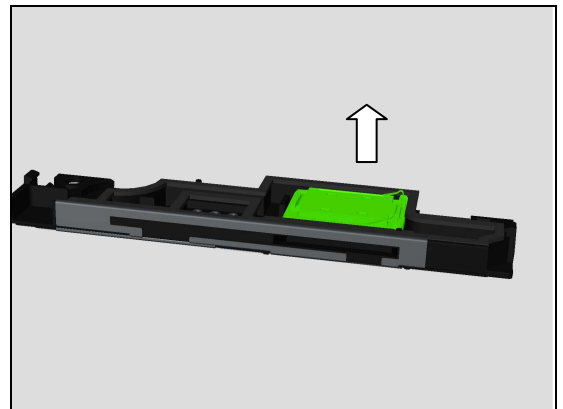
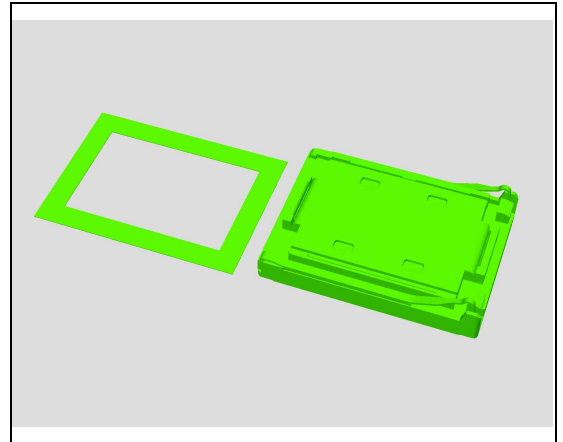
Detach the Speaker by using a pair of tweezers.

Peel off the Speaker Adhesive.

Scrap! Not to be reused!

INSTALLATION

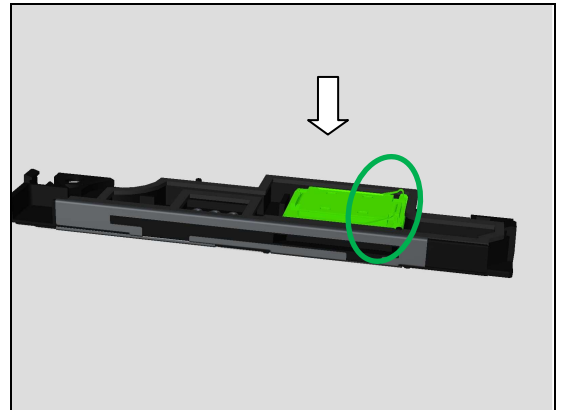
Place a new Speaker Adhesive in the correct position as shown in the picture.



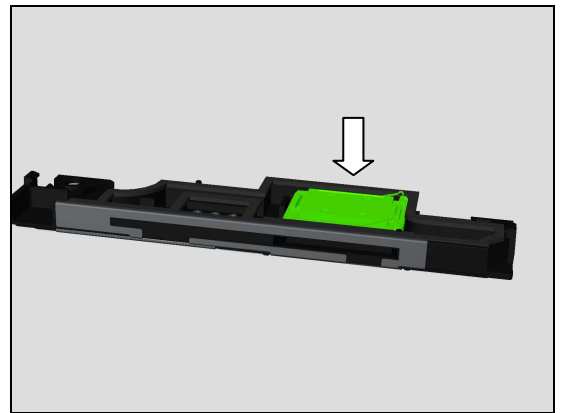
Replacement

Place a new Speaker in the correct position.

Make sure the Pin direction is correct!



Press to secure its attachment.



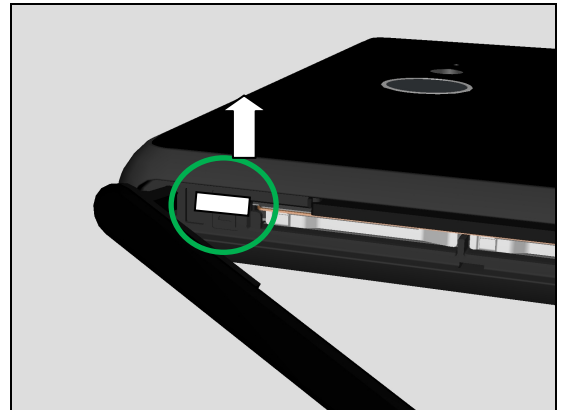
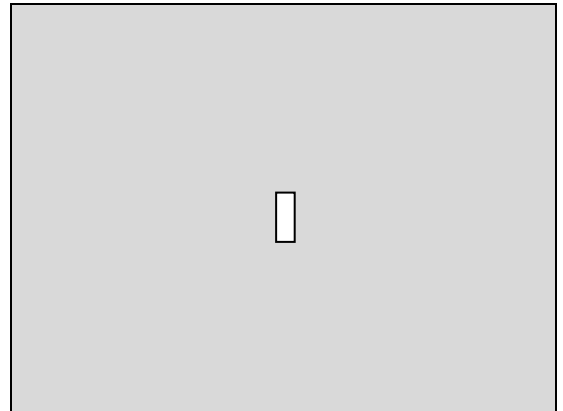
Replacement

4.29 Water Intrusion Label Rectangle

Carry out the Removal as described below.
Prepare a new Water Intrusion Label Rectangle.
Carry out the Installation as described below.

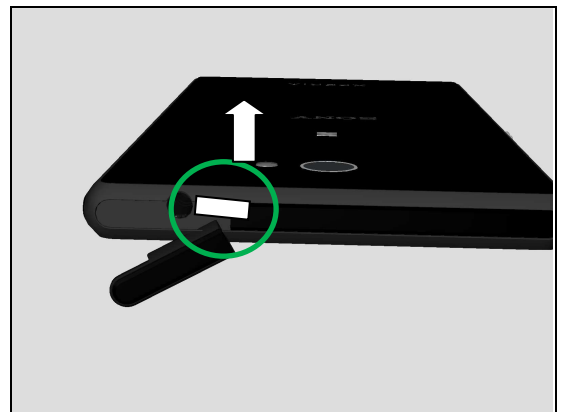
REMOVAL

Open SIM Cover and remove the Water Intrusion Label Rectangle.



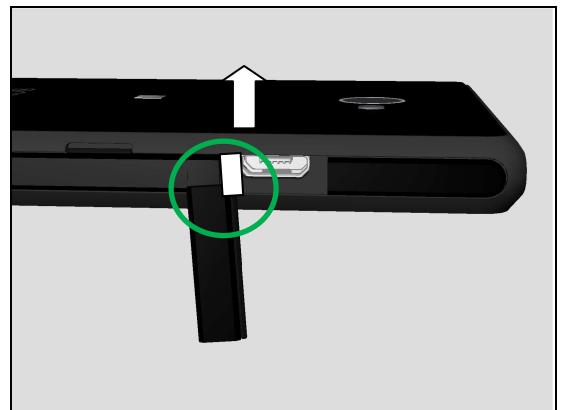
REMOVAL

Open Audio Jack Cover and remove the Water Intrusion Label Rectangle.



REMOVAL

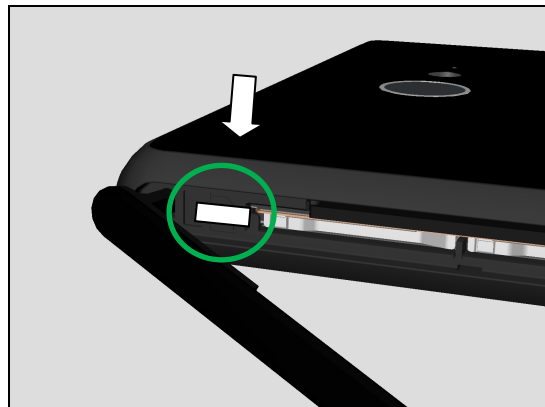
Open USB Cover and remove the Water Intrusion Label Rectangle.



Replacement

INSTALLATION

Assemble the new Water Intrusion Label Rectangle and close SIM Cover.



INSTALLATION

Assemble the new Water Intrusion Label Rectangle and close Audio Jack Cover.



INSTALLATION

Assemble the new Water Intrusion Label Rectangle and close USB Cover.



Replacement

4.30 PL Sensor FPC

Follow the 3.1 – 3.6 Disassembly instructions!

Follow 4.6 Removal Instruction

Carry out the Removal as described below.

Prepare a new PL Sensor FPC.

Carry out the Installation as described below.

Follow 4.6 Installation Instruction

Follow the 5.1 – 5.6 Reassembly instructions!

Must do the Calibration for P-sensor, light sensor after PL Sensor FPC replacement: 1289-6643 Trouble Shooting Application – mechanical.

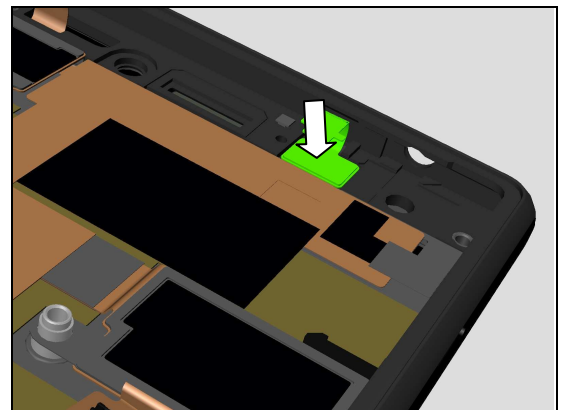
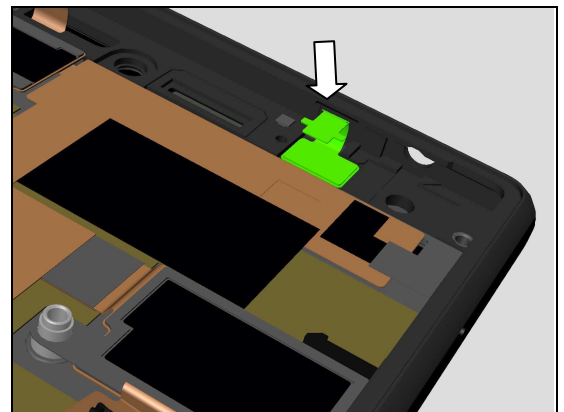
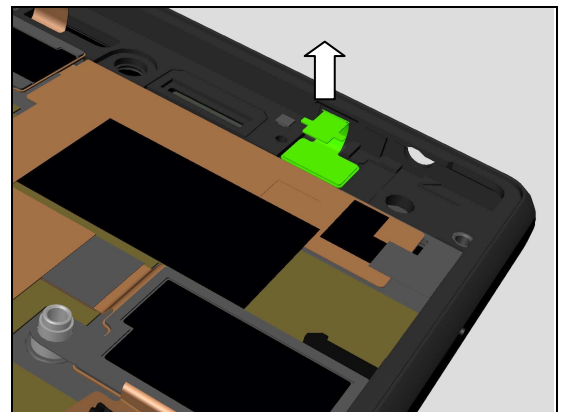
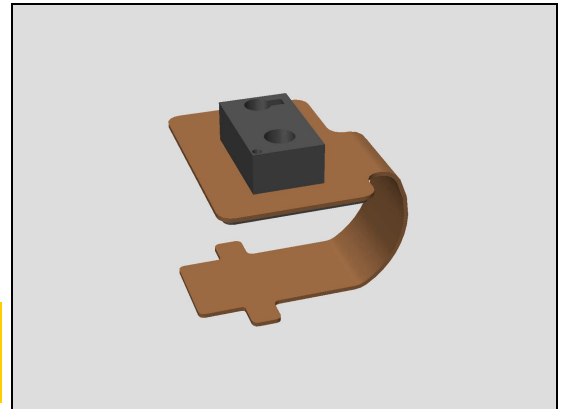
REMOVAL

Remove the PL Sensor FPC from its cavity.

INSTALLATION

Place a new PL Sensor FPC into its cavity.

Press to secure its attachment.



Replacement

4.31 Receiver & Receiver Adhesive

Follow the 3.1 – 3.6 Disassembly instructions!

Carry out the Removal as described below.

Prepare a new Receiver and Receiver Adhesive.

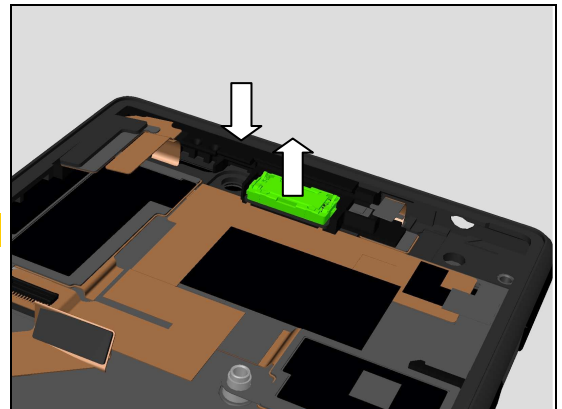
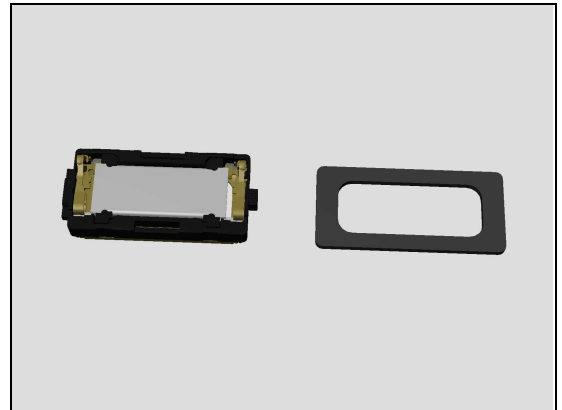
Carry out the Installation as described below.

Follow the 5.1 – 5.6 Reassembly instructions!

REMOVAL

Detach the Receiver by using a pair of tweezers.

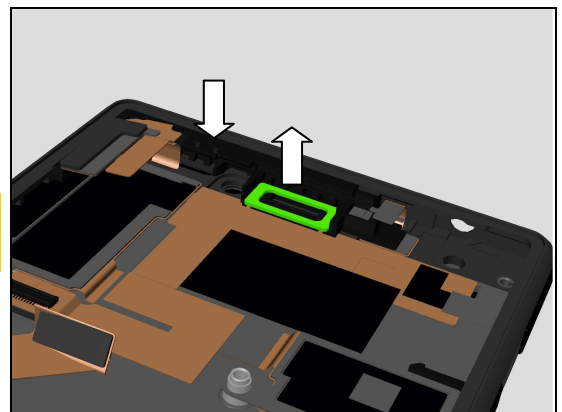
Note: Press Antenna DIV tightly during removal.



Clean the surplus Receiver Adhesive on Antenna DIV.

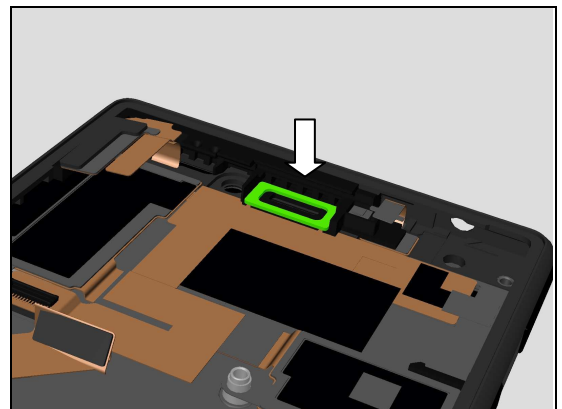
Scrap! The Receiver Adhesive can't be reused!

Note: Press Antenna DIV tightly during removal



INSTALLATION

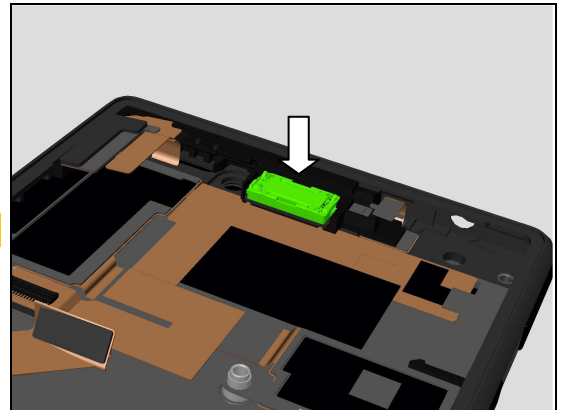
Place a new Receiver Adhesive in the correct position.



Replacement

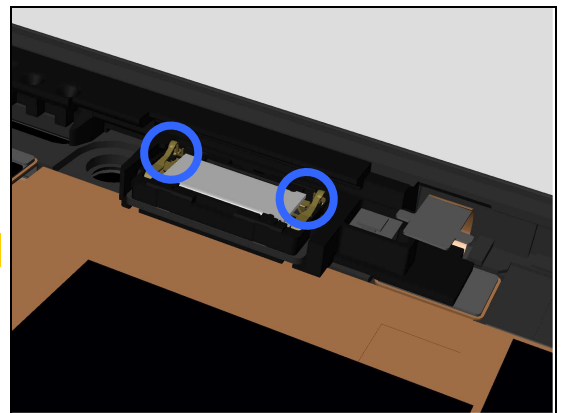
Place a new Receiver in the correct position.

Don't touch the Receiver pins!



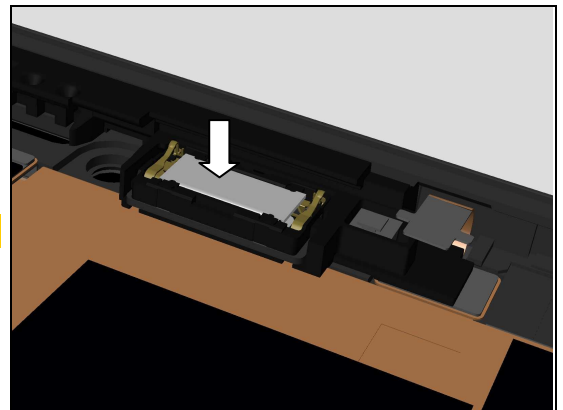
Check *Receiver's* pin correct direction as shown in the picture!

Don't touch the Receiver pins!



Press to secure its attachment.

Do not touch the Receiver pins!



Replacement

4.32 WP Speaker Adhesive

Follow the 3.1 – 3.3 Disassembly instructions!

Carry out the Removal as described below.

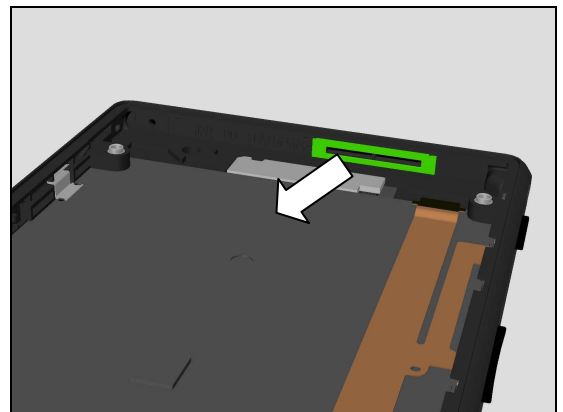
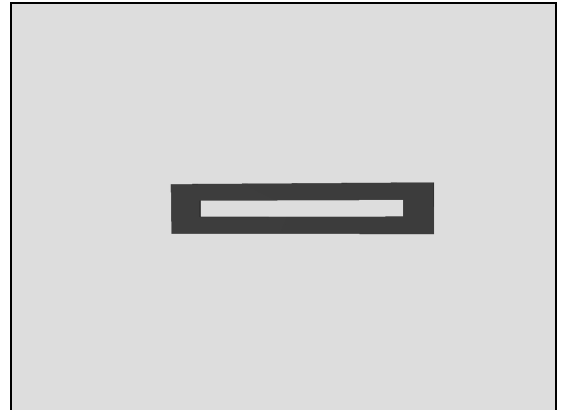
Prepare a new WP Speaker Adhesive.

Carry out the Installation as described below.

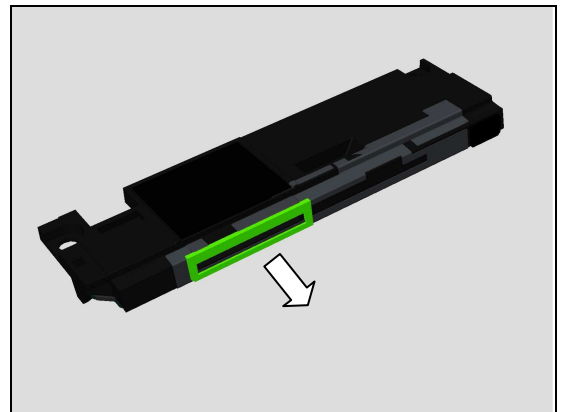
Follow the 5.4-5.6 Installation instructions!

REMOVAL

Remove the surplus WP Speaker Adhesive.



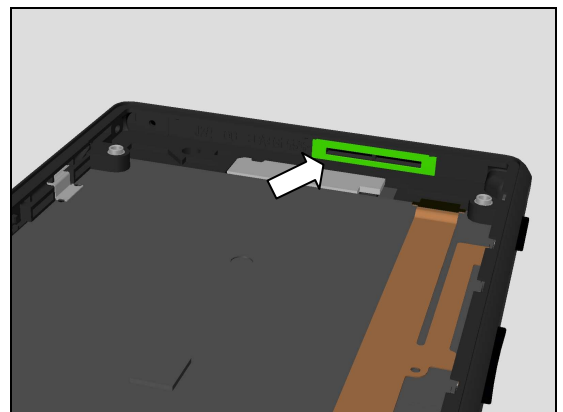
Remove the surplus WP Speaker Adhesive.



INSTALLATION

Place a new WP Speaker Adhesive as shown.

Note: pay attention about its direction.



Replacement

4.33 Flash Lens Adhesive

Follow the 3.1 Removal instructions!

Carry out the Removal as described below.

Prepare a Flash Lens Adhesive.

Carry out the Installation as described below.

Follow the 5.6 Installation instructions!

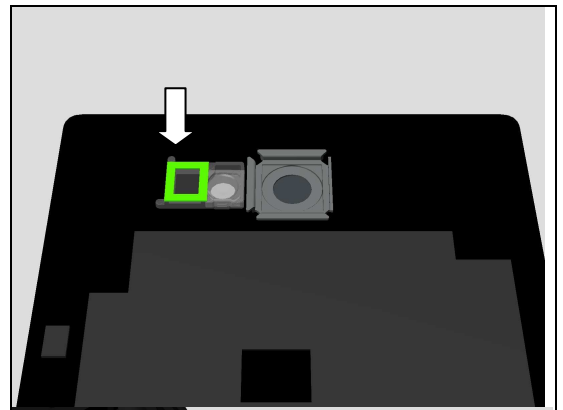
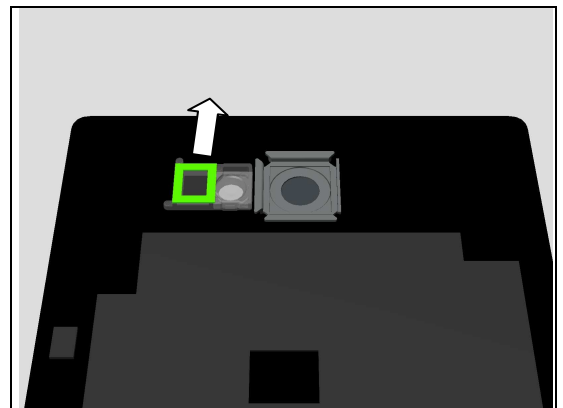
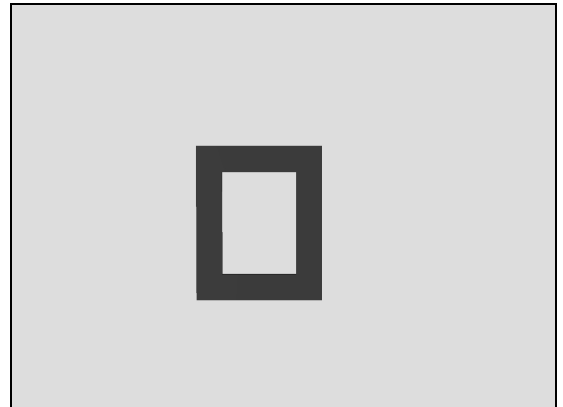
REMOVAL

Remove the Flash Lens Adhesive.

INSTALLATION

Place the Flash Lens Adhesive in the correct position.

Note: pay attention about its direction.



Replacement

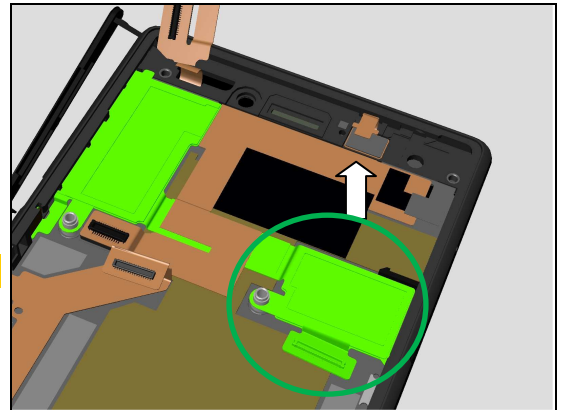
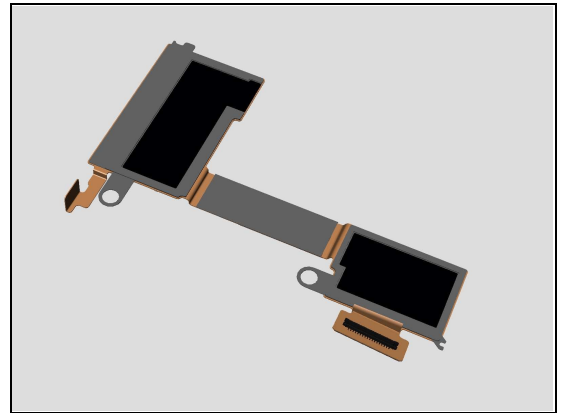
4.34 SIM FPC Assy

Follow the 3.1 – 3.6 Disassembly instructions!
 Carry out the Removal as described below.
 Prepare the new SIM FPC Assy.
 Carry out the Installation as described below.
Follow the 5.1 – 5.6 Reassembly instructions!

REMOVAL

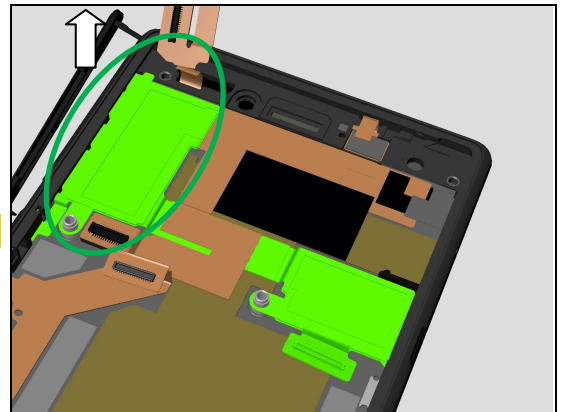
Remove right side of SIM FPC Assy first.

Scrap! Not to be reused!



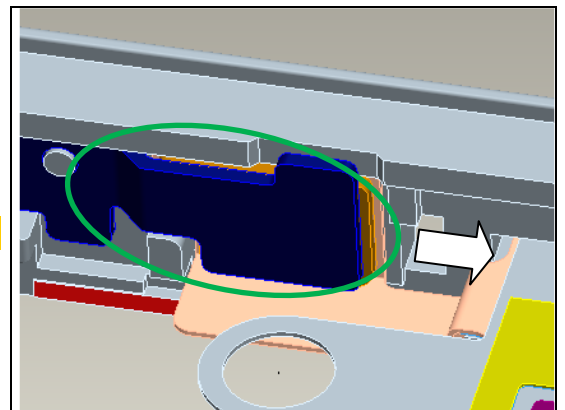
Remove left side of SIM FPC Assy then.

Scrap! Not to be reused!



Pull out the Reset key FPC from Metal sheet.

Scrap! Not to be reused!

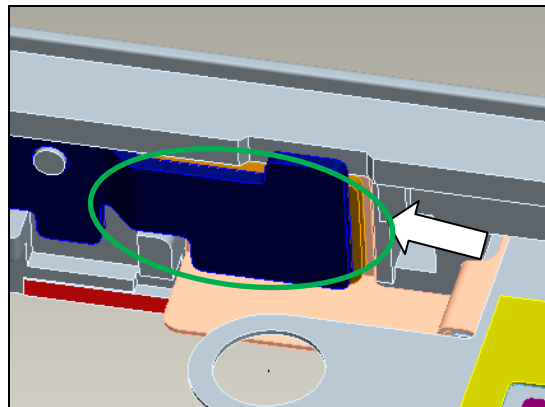


Replacement

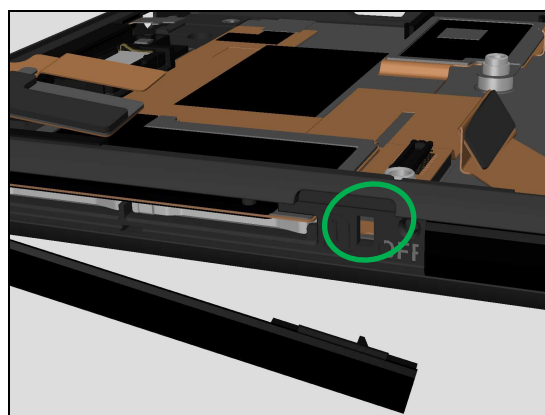
INSTALLATION

Insert the Reset Key FPC under Metal sheet first.

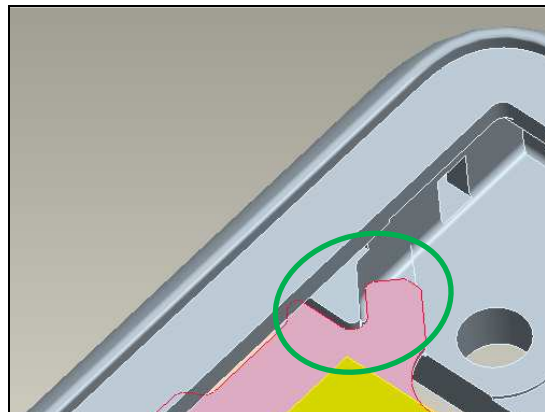
Note: Ensure the Rest Key FPC is at its correct position.



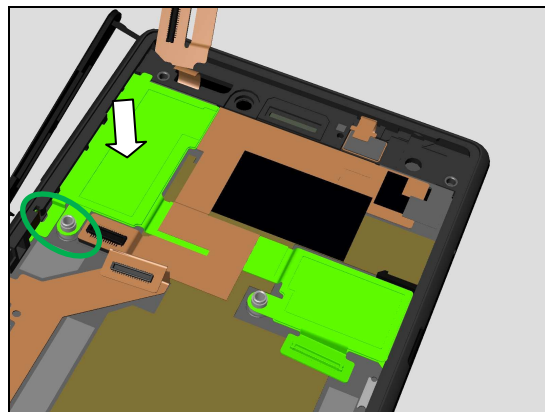
Check the Reset Key function from outside as shown.



Assemble the left top corner onto its correct position.

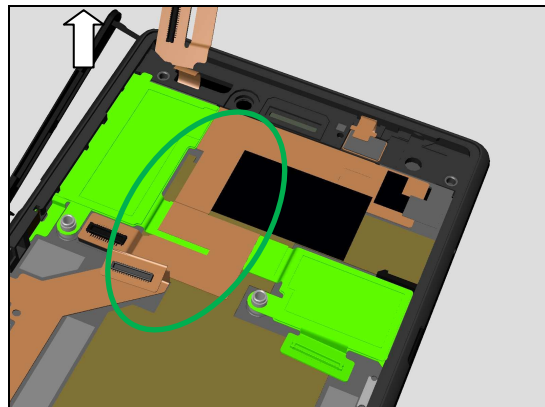


Assemble the left bottom metal hole into its pillar.
Press the left side to secure its attachment.

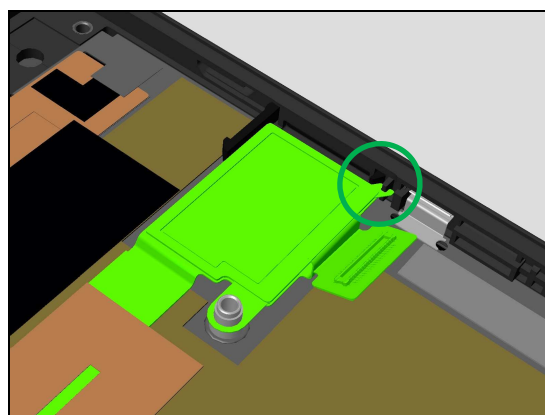


Replacement

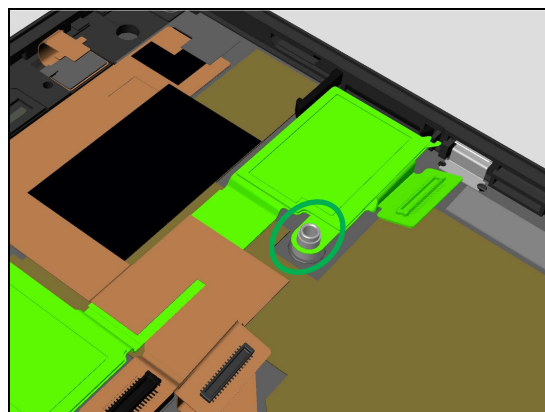
Put the middle FPC of SIM FPC Assy under LCM FPC.



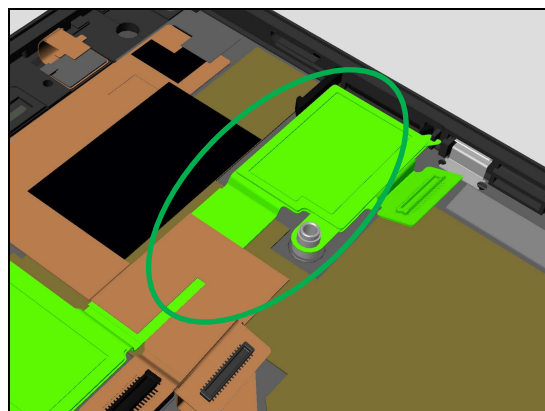
Assemble the right down corner into its correct position first.



Assemble the screw metal hole onto its pillar then.



Press the right side and middle FPC to secure its attachment.



Replacement

4.35 Sponge BAT BTB

Follow the 3.1 – 3.2 Disassembly instructions!

Carry out the Removal as described below.

Prepare a new Sponge BAT BTB.

Carry out the Installation as described below.

Follow the 5.5 – 5.6 Reassembly instructions!

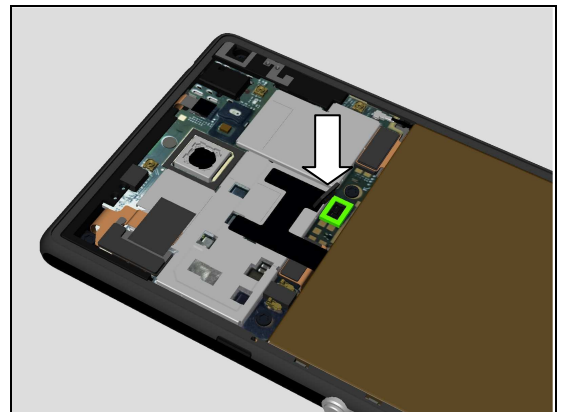
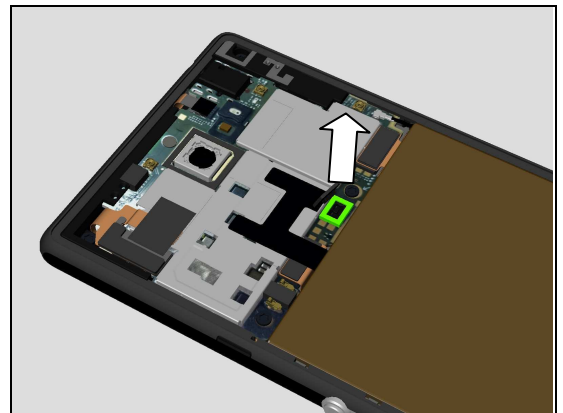
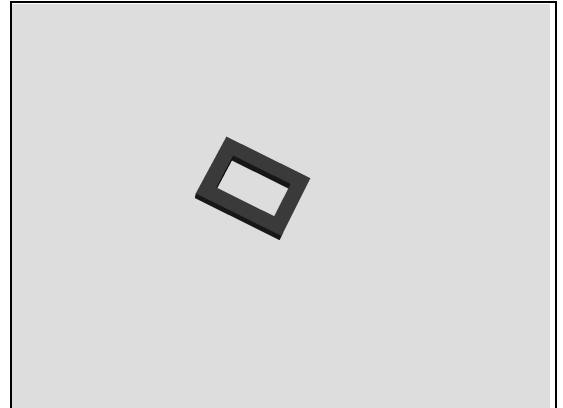
REMOVAL

Remove the Sponge BAT BTB from its connector.

Note: Scrap, not to be reused!

INSTALLATION

Place the Sponge BAT BTB onto its connector.



Replacement

4.36 Sponge KEY BTB

Follow the 3.1 – 3.2 Disassembly instructions!

Carry out the Removal as described below.

Prepare a new Sponge KEY BTB.

Carry out the Installation as described below.

Follow the 5.5 – 5.6 Reassembly instructions!

REMOVAL

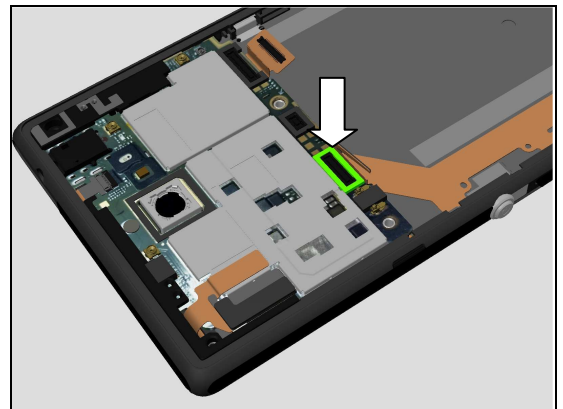
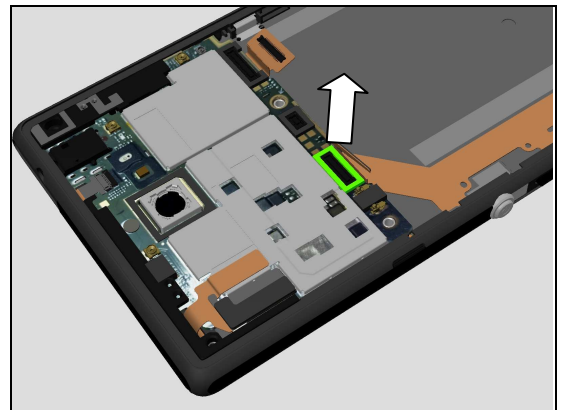
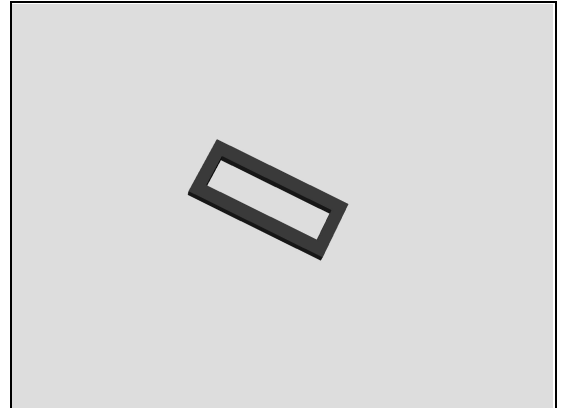
Remove the Sponge KEY BTB from its connector.

Note: Scrap, not to be reused!

INSTALLATION

Place the Sponge KEY BTB in the correct position.

Note: pay attention about its direction.



Replacement

4.37 Sponge SIM BTB

Follow the 3.1 – 3.2 Disassembly instructions!

Carry out the Removal as described below.

Prepare a new Sponge SIM BTB.

Carry out the Installation as described below.

Follow the 5.5 – 5.6 Reassembly instructions!

REMOVAL

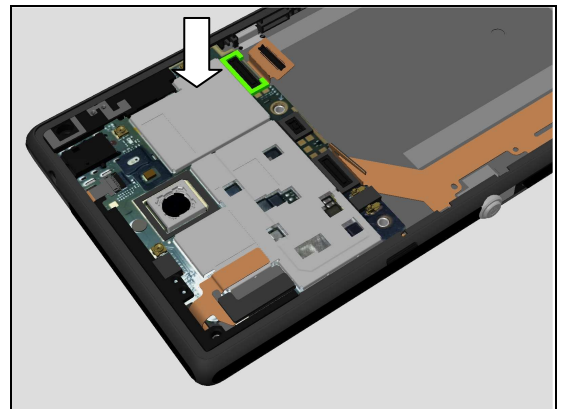
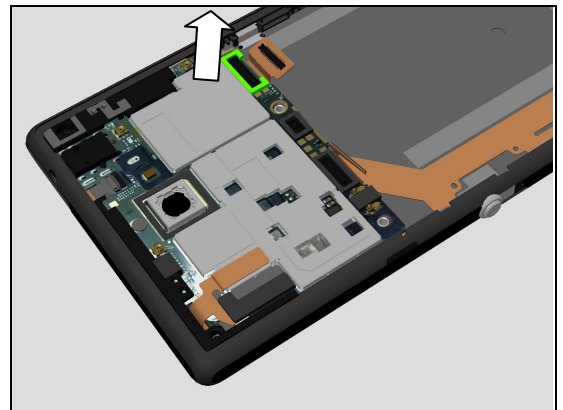
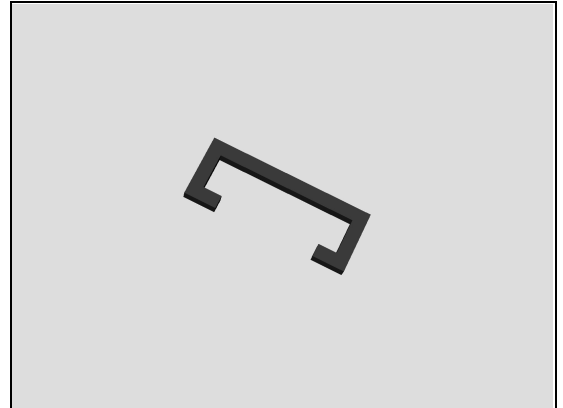
Remove the Sponge SIM BTB from its connector.

Note: Scrap, not to be reused!

INSTALLATION

Place the Sponge SIM BTB in the correct position.

Note: pay attention about its direction.



Replacement

4.38 Sponge TP BTB

Follow the 3.1 – 3.2 Disassembly instructions!

Carry out the Removal as described below.

Prepare a new Sponge TP BTB.

Carry out the Installation as described below.

Follow the 5.5 – 5.6 Reassembly instructions!

REMOVAL

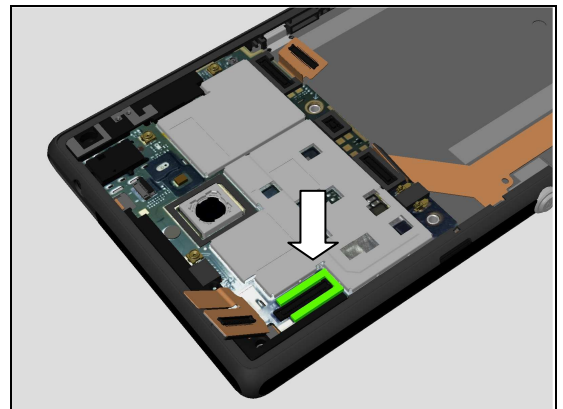
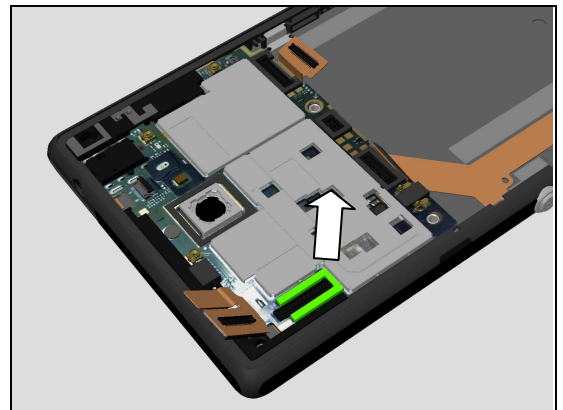
Remove the Sponge TP BTB from its connector.

Note: Scrap, not to be reused!

INSTALLATION

Place the Sponge TP BTB in the correct position.

Note: pay attention about its direction.



Replacement

4.39 Sponge Front Camera BTB

Follow the 3.1 – 3.6 Disassembly instructions!

Follow 4.22 Removal instructions.

Carry out the Removal as described below.

Prepare a new Sponge Front Camera BTB.

Carry out the Installation as described below.

Follow 4.22 Installation instructions.

Follow the 5.1 – 5.6 Reassembly instructions!

REMOVAL

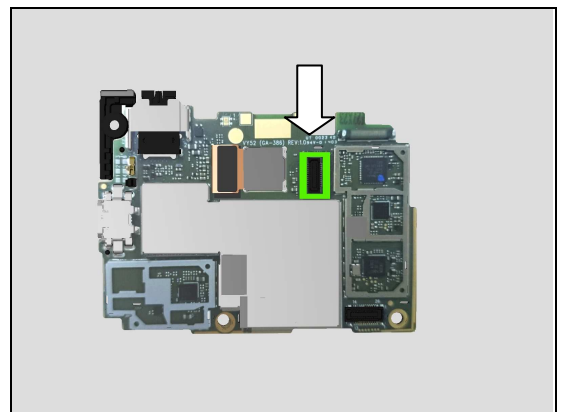
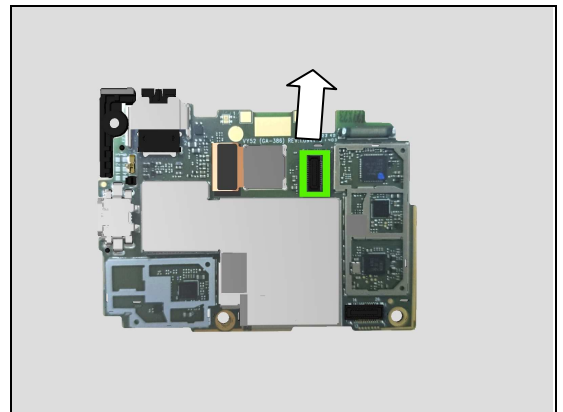
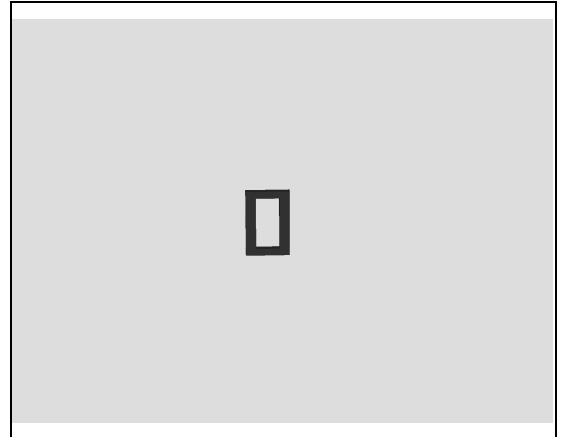
Remove the Sponge Front Camera BTB from its connector.

Note: Scrap, not to be reused!

INSTALLATION

Place the Sponge Front Camera BTB in the correct position.

Note: pay attention about its direction.



Replacement

4.40 Adhesive Shield Cover

Follow the 3.1 Disassembly instructions!

Carry out the Removal as described below.

Prepare a new Adhesive Shield Cover.

Carry out the Installation as described below.

Follow the 5.6 Reassembly instructions!

REMOVAL

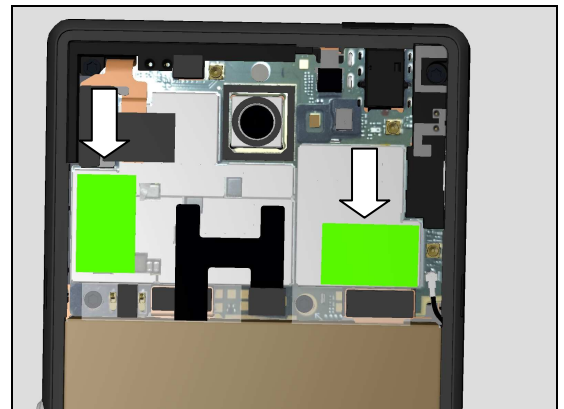
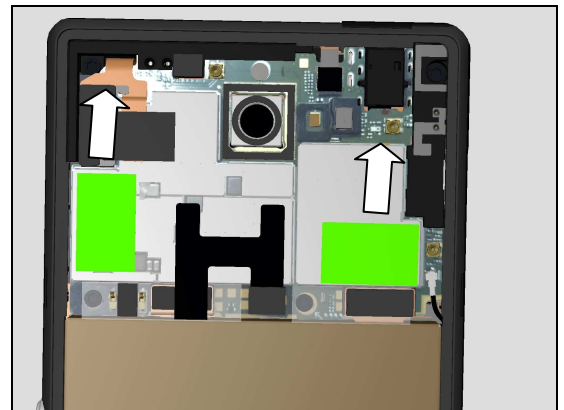
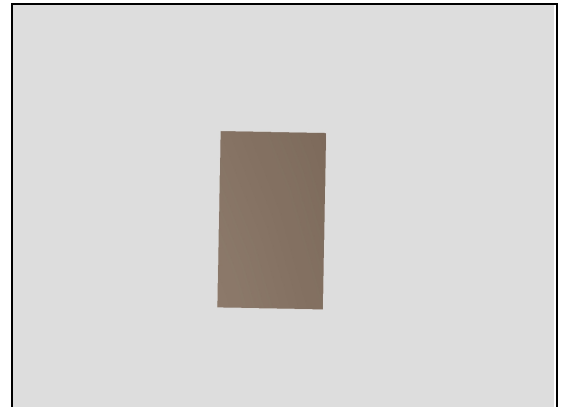
Remove the Adhesive Shield Cover.

Note: Scrap, not to be reused!

INSTALLATION

Place new Adhesive Shield Cover in the correct position.

Note: pay attention about its direction.



Replacement

4.41 NFC Protection Film and NFC Black Mylar

Follow the 3.1 Disassembly instructions!

Carry out the Removal as described below.

Prepare a new NFC Protection Film and new NFC Black Mylar.

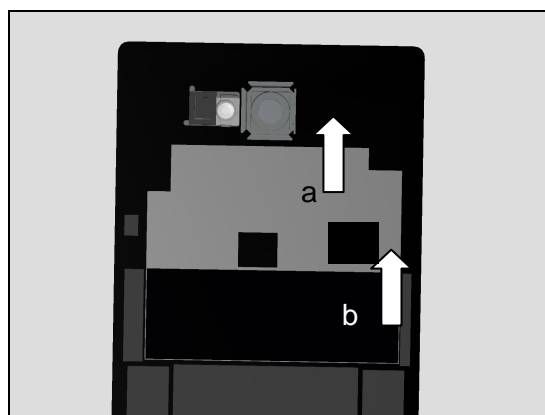
Carry out the Installation as described below.

Follow the 5.6 Reassembly instructions!

REMOVAL

Remove the NFC Protection Film (a) and NFC Black Mylar (b).

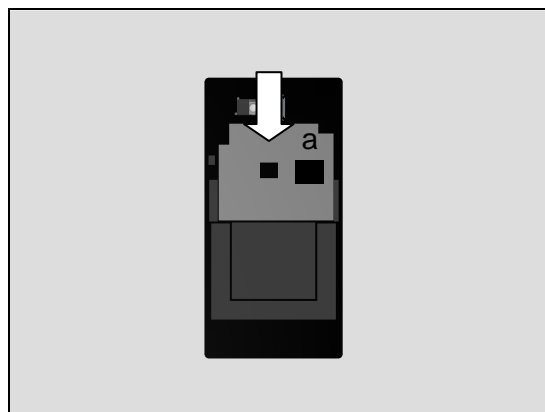
Note: Scrap! not to be reused!



INSTALLATION

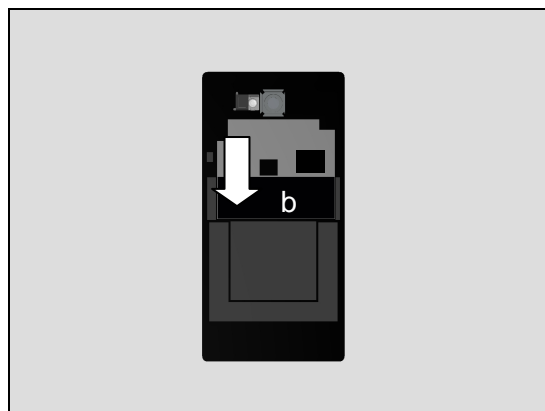
Place new NFC Protection Film (a) in the correct position first.

Note: pay attention about its direction.



Place new NFC Black Mylar (b) in the correct position then.

Note: pay attention about its direction.



Replacement

4.42 Sponge Main Camera BTB

Follow the 3.1 – 3.6 Disassembly instructions!

Follow 4.23 Removal instructions.

Carry out the Removal as described below.

Prepare a new Sponge Main Camera BTB.

Carry out the Installation as described below.

Follow 4.23 Installation instructions.

Follow the 5.1 – 5.6 Reassembly instructions!

REMOVAL

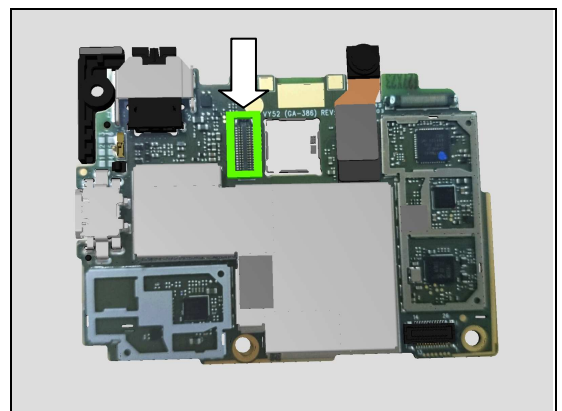
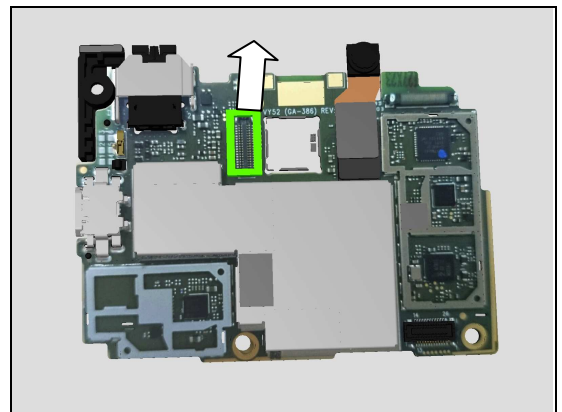
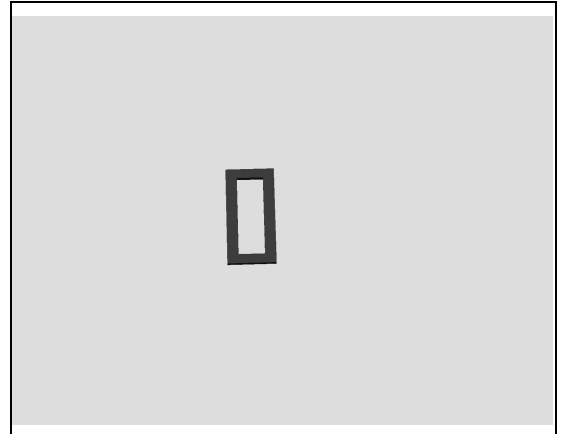
Remove the Sponge Main Camera BTB from its connector.

Note: Scrap, not to be reused!

INSTALLATION

Place the Sponge Main Camera BTB in the correct position.

Note: pay attention about its direction.



Replacement

4.43 Board Swap – Replacement

Follow the 3.1 – 3.6 Disassembly instructions!

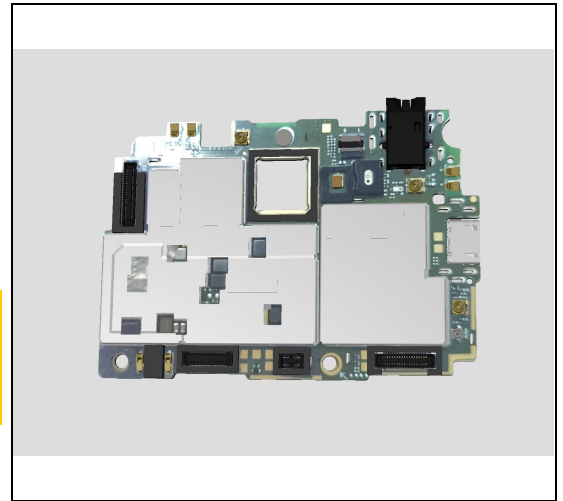
Follow the 4.18, 4.19, 4.20 Removal instructions!

Replace the Swap Board.

Follow the 4.18, 4.19, 4.20 Installation instructions!

Follow the 5.1 – 5.6 Reassembly instructions!

When replacing Front Cover LCM TP Assy or board swap, must do the Calibration for P-sensor, light sensor, accelerometer: 1289-6643 Trouble Shooting Application – mechanical.

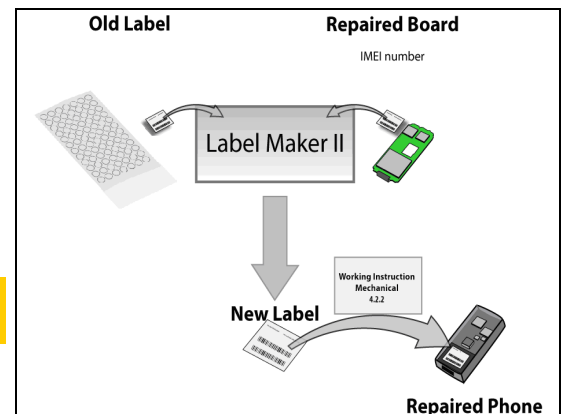


4.44 Board Swap – Change Label

CHANGE LABEL

Follow the instructions in the Generic Repair Manual – Build swap for change of label.

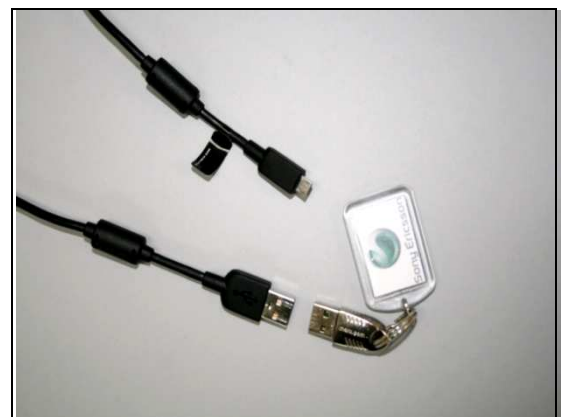
Note: Follow 4.22 Core Unit Label & Tray A thick Blank to change Label instead of Tray A(Laser Print).



4.45 Board Swap – Customize of Software

CUSTOMIZE OF SOFTWARE

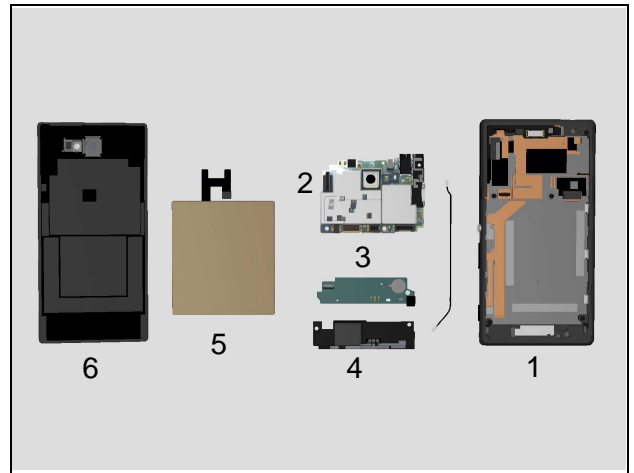
Follow the instructions in the Generic Repair Manual – Build swap for customization of the software.



5 Reassembly

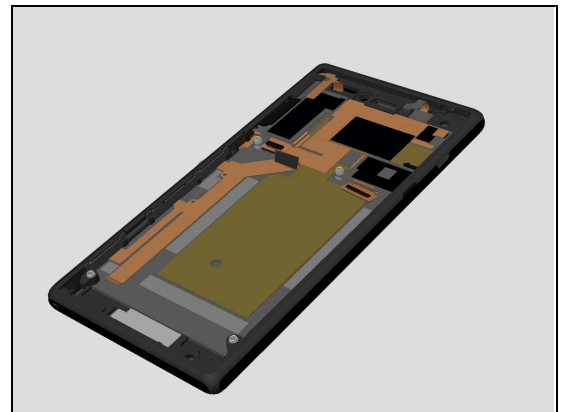
The reassembly is done in the following order:

1. Front Cover LCM TP Assy
2. Main PBA
3. Sub Board Assy
4. Main ANT Assy
5. Embedded Battery Assy
6. Battery Cover Assy



5.1 Front Cover LCM TP Assy

Prepare the Front Cover LCM TP Assy.



Reassembly

5.2 Main PBA

Prepare the Main PBA.

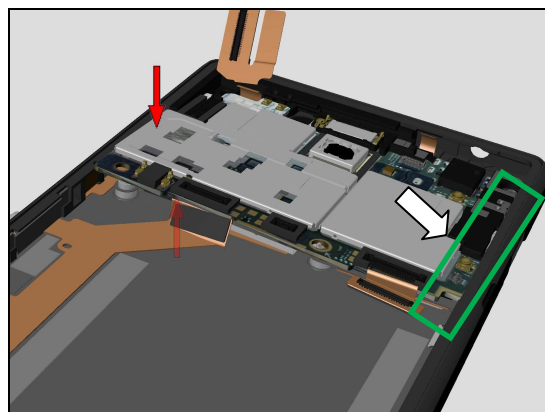
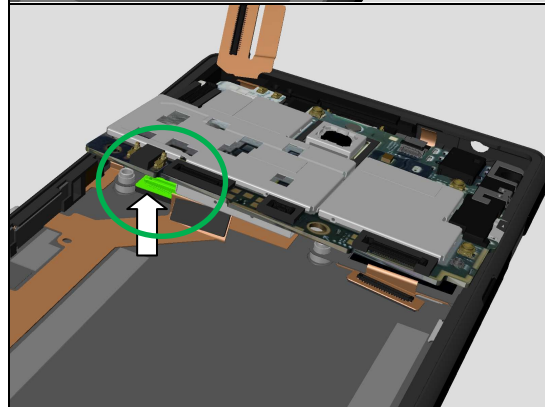
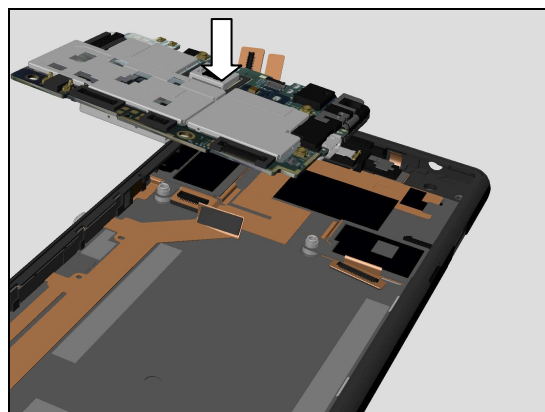
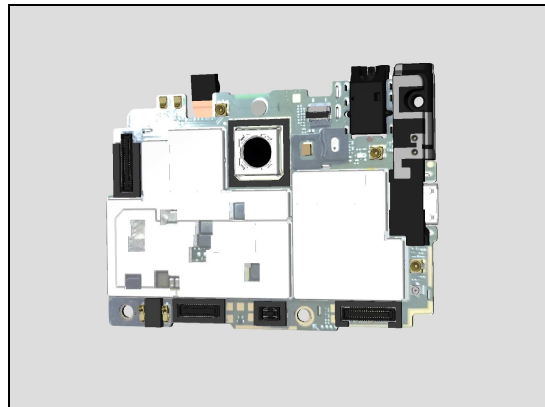
Place the Main PBA onto Front Cover LCM TP Assy.

Note! Open Audio Jack Cover and USB Cover first to avoid their tails impacting Main PBA reassembly.

Assemble the LCM BtB connector under Main PBA first.

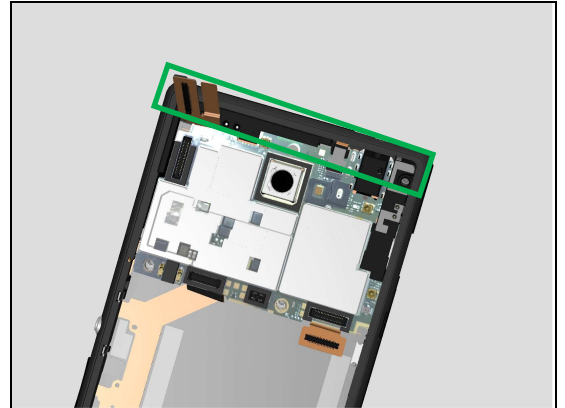
Insert right USB side of Main PBA onto Front Cover LCM TP Assy as shown then.

Note! Open Audio Jack Cover and USB Cover first to avoid their tails impacting Main PBA reassembly.



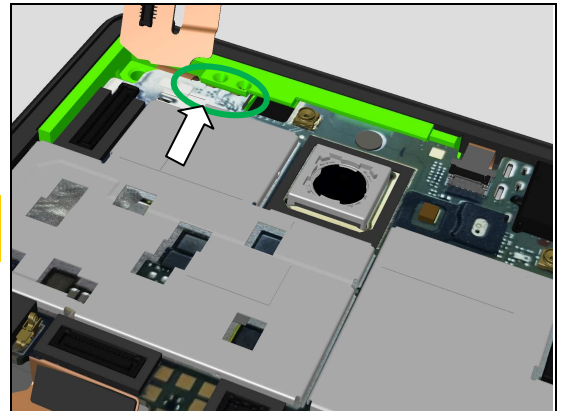
Reassembly

There is about 5mm distance between Main PBA and Front Cover LCM TP Assy.

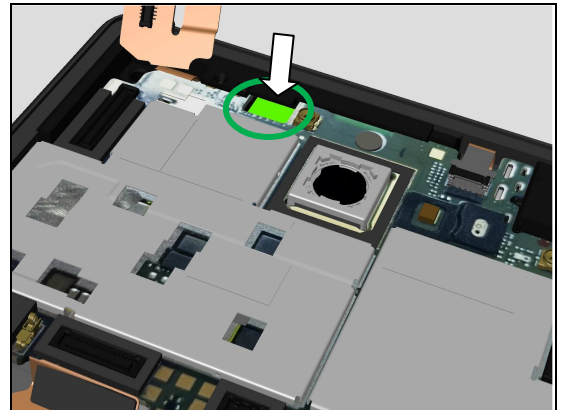


Insert Main PBA spring pins under Antenna DIV first.

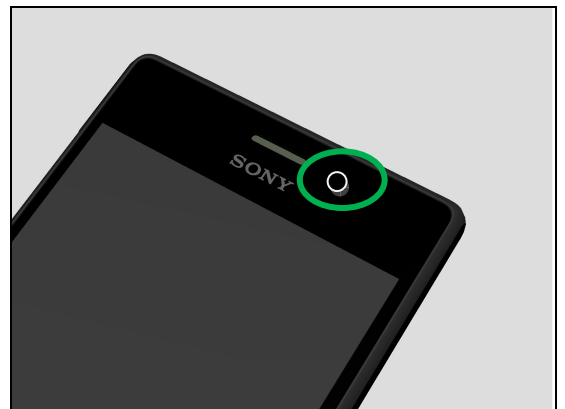
Note! Open Audio Jack Cover and USB Cover first to avoid their tails impacting Main PBA reassembly.



Press Front Camera Assy down carefully onto its correct cavity 2-3 times during inserting Main PBA.



Check Front Camera Assy at its correct centre position from front side.

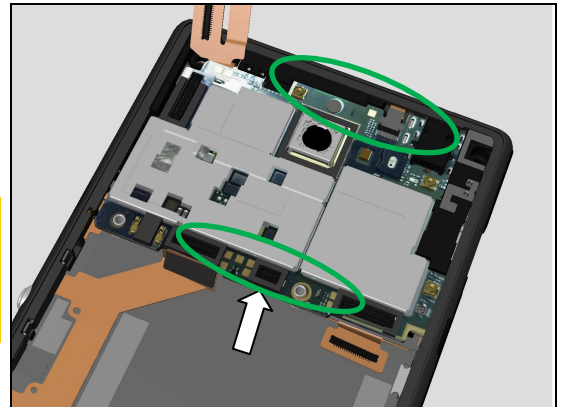


Reassembly

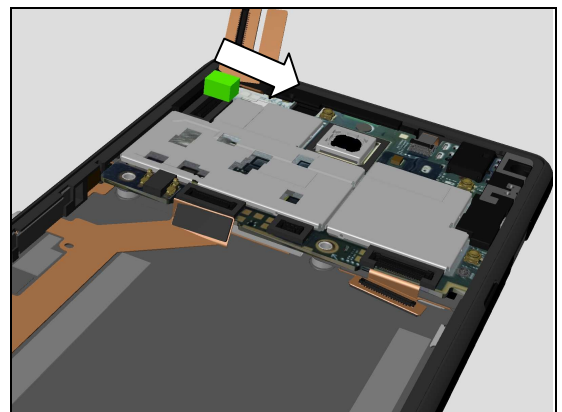
Push bottom side of Main PBA until it is on correct position.
Press down Main PBA around to ensure its correct position.

Note: Make sure there is no gap between Main PBA and Antenna DIV as shown.

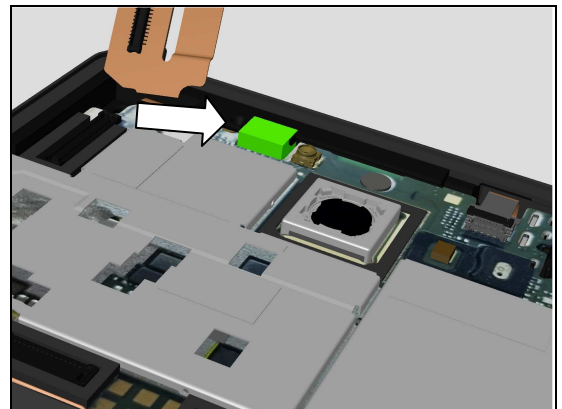
Note: Close Audio Jack Cover and USB Cover after Main PBA reassembly.



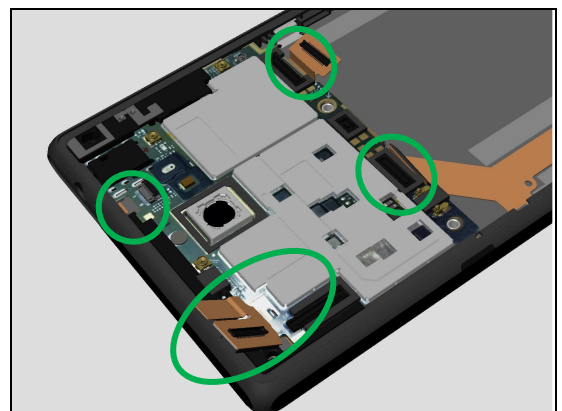
Assemble the Foam Front Camera.



Insert the Foam Front Camera under Antenna DIV at its Cavity to press Front Camera Assy.

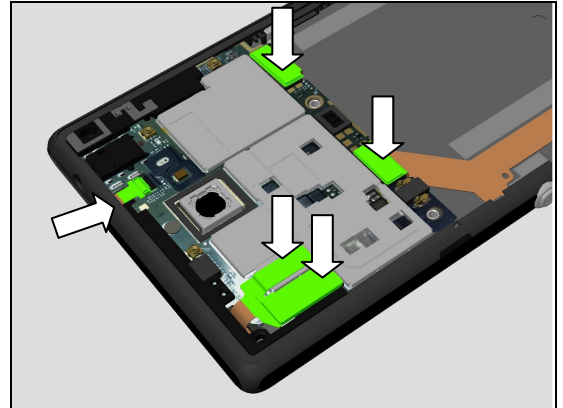


Assemble three BtB connectors and one ZIF connector on Main PBA.

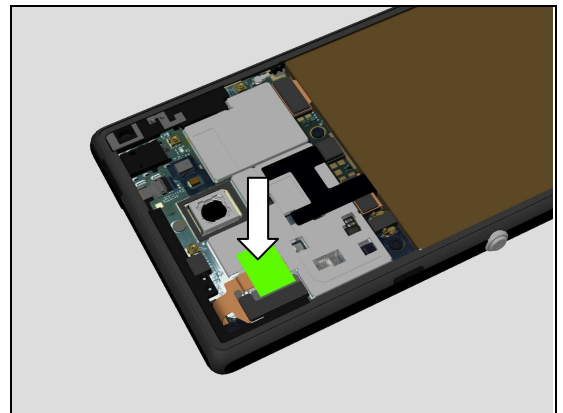


Reassembly

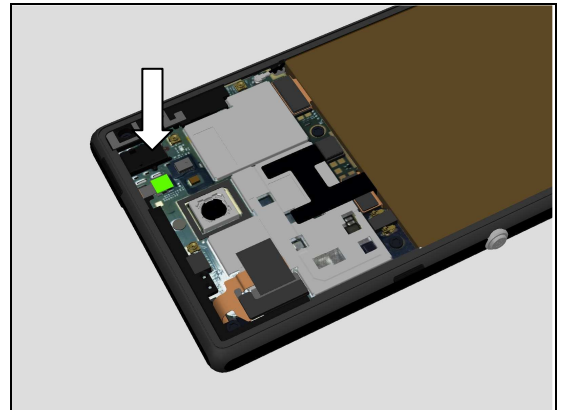
Press to secure its correct connection.



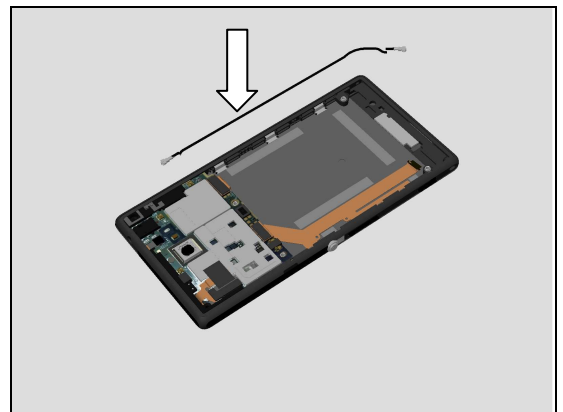
Assemble the ESD Cloth TP BTB on LCM BtB connector.



Assemble Film on PL ZIF.

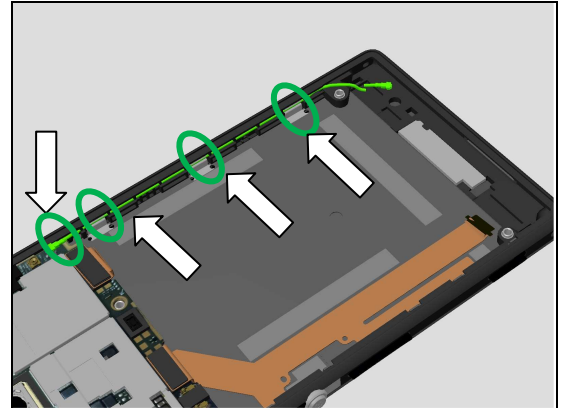


Assemble the RF Cable onto Core unit.



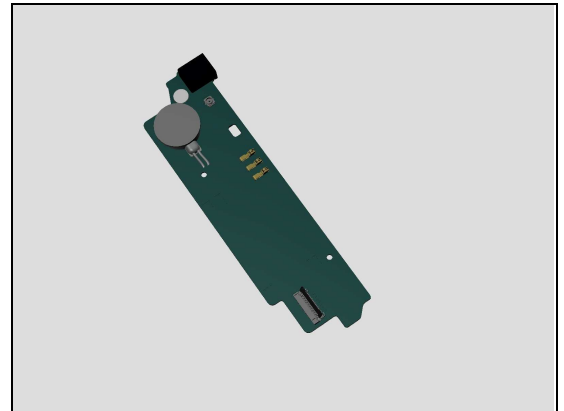
Reassembly

Close the RF Cable connector on Main PBA.
Insert the RF Cable into its cavity on Front Cover LCM TP Assy as shown.



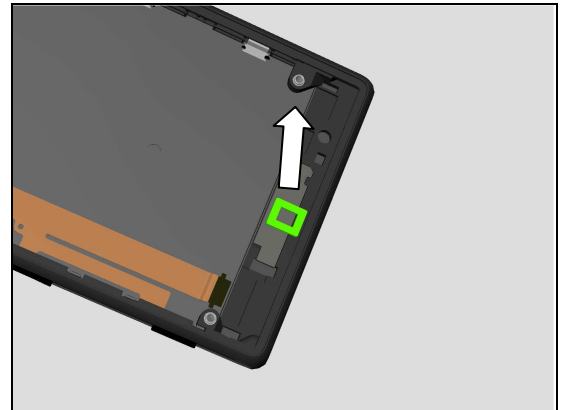
5.3 Sub Board Assy

Prepare the Sub Board Assy.



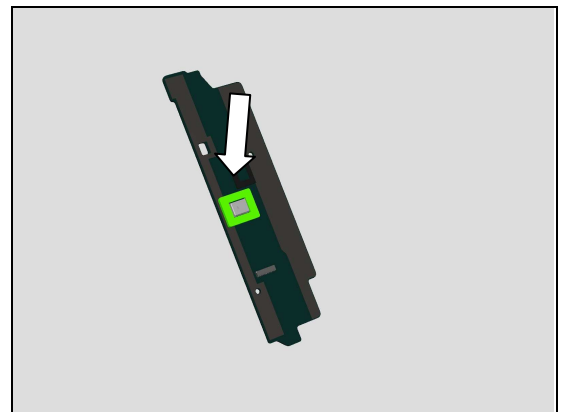
Remove the surplus WP 1ST MIC Adhesive left on Front Cover LCM TP Assy.

Note: Scrap! Can't be reused.



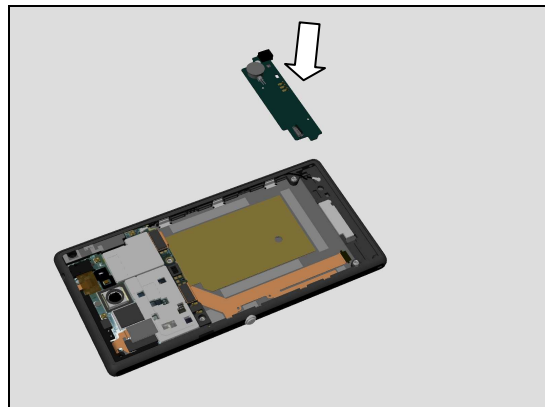
Place a new WP 1ST MIC Adhesive around Main MIC on Sub Board Assy then.

Note: Remove the surplus WP 1ST MIC Adhesive on Sub Board Assy first if has.

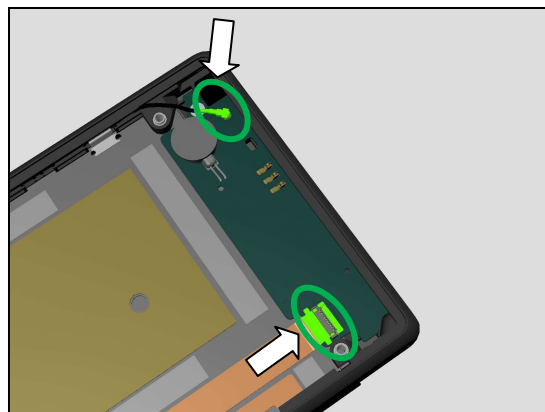


Reassembly

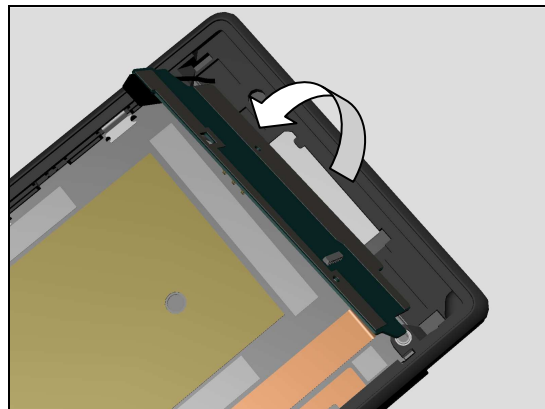
Place the Sub Board Assy onto Front Cover LCM TP Assy.



Close the RF Cable connector on Sub Board Assy.
Insert Side Key FPC into its ZIF connector on Sub Board Assy and close it.

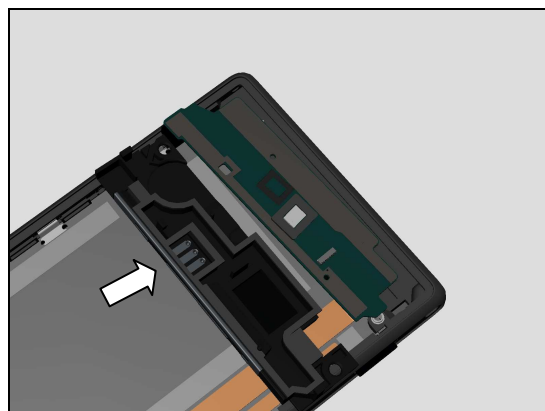


Turn over the Sub Board Assy.



5.4 Main ANT Assy

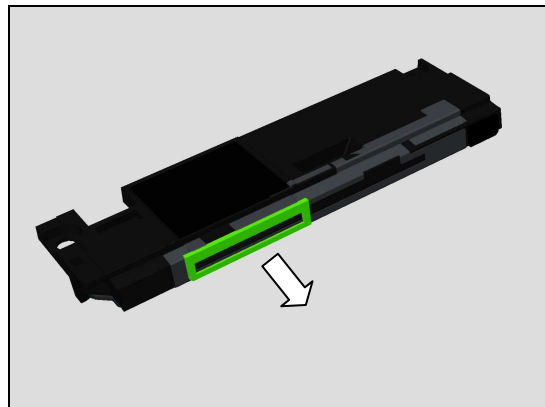
Prepare the Main ANT Assy.



Reassembly

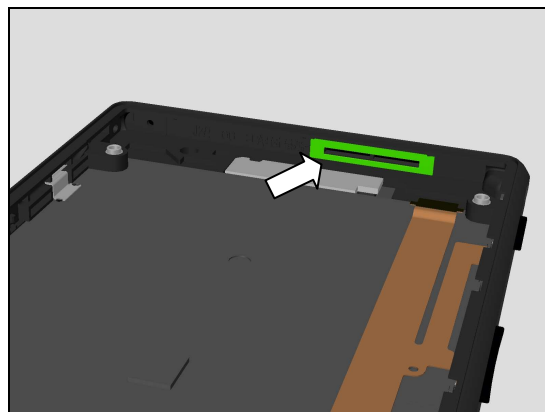
Remove the surplus WP Speaker Adhesive on Main ANT Assy first.

Scrap! Cannot be reuse.

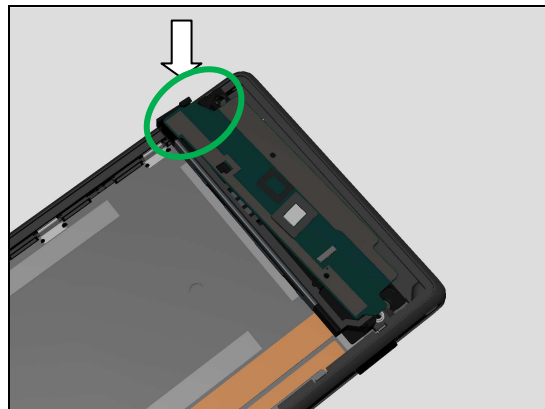


Place a new WP Speaker Adhesive on Front Cover LCM TP Assy as shown.

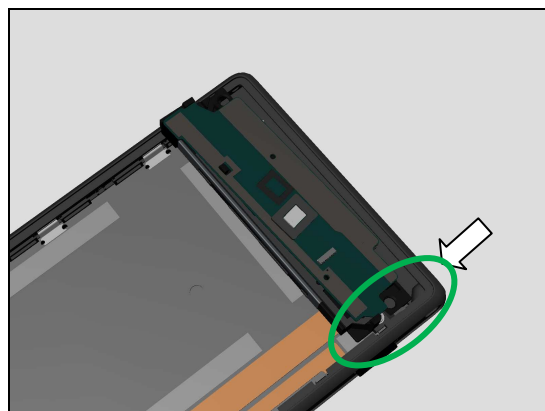
Note: pay attention about its direction.



Insert Left side of Sub Board Assy onto Main ANT Assy first.

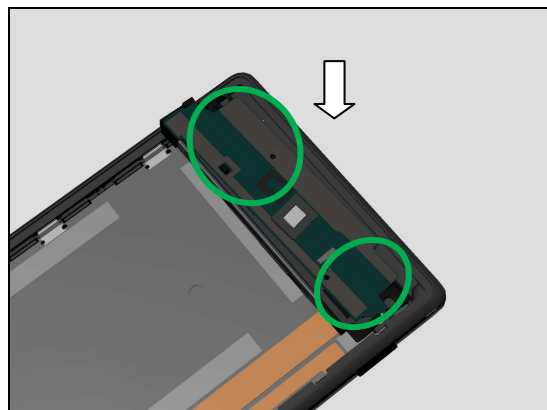


Push back right side of Sub Board Assy onto Main ANT Assy then.

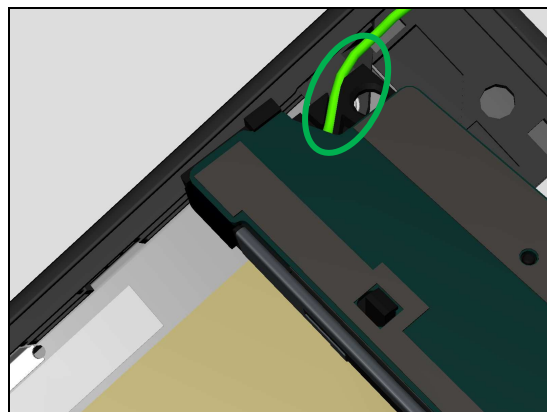


Reassembly

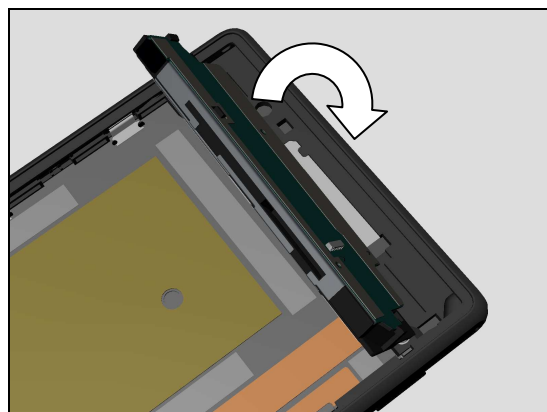
Assemble the middle hook of Main ANT Assy and its position pillars.



Assemble the RF Cable inside its cavity on Main ANT Assy.

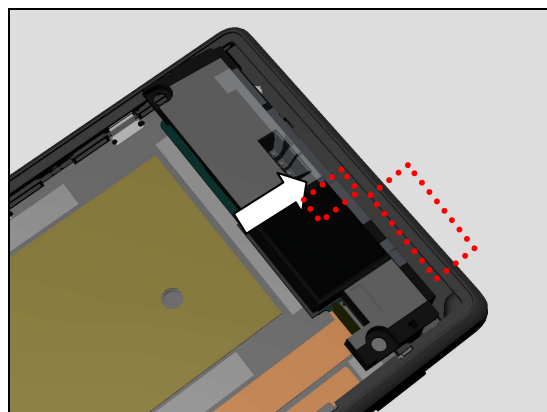


Turn over the Main ANT Assy back on Front Cover LCM TP Assy.



Insert top side of Main ANT Assy into Front Cover LCM TP Assy first.

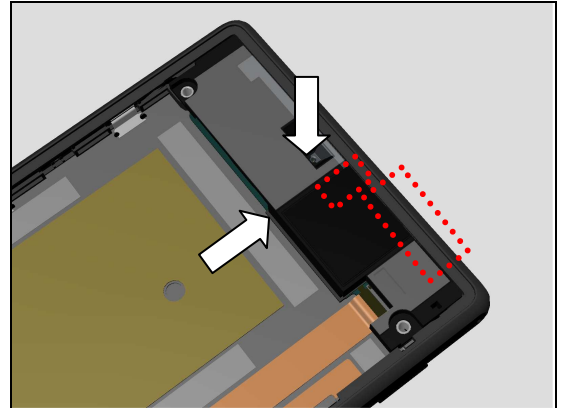
Note: new WP 1ST MIC Adhesive and New WP Speaker Adhesive are shown in photo.



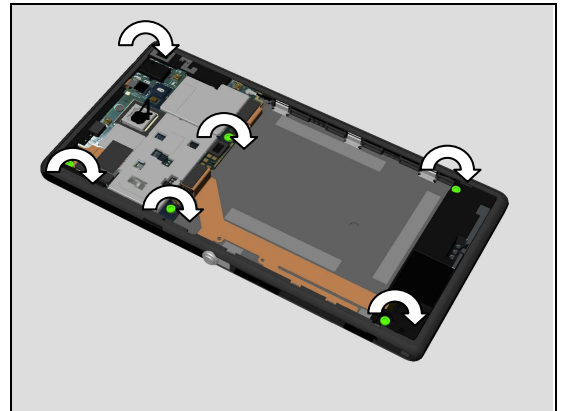
Reassembly

Put down Main ANT Assy then and press it to secure its position.

Note: new WP 1ST MIC Adhesive and New WP Speaker Adhesive are shown in photo.



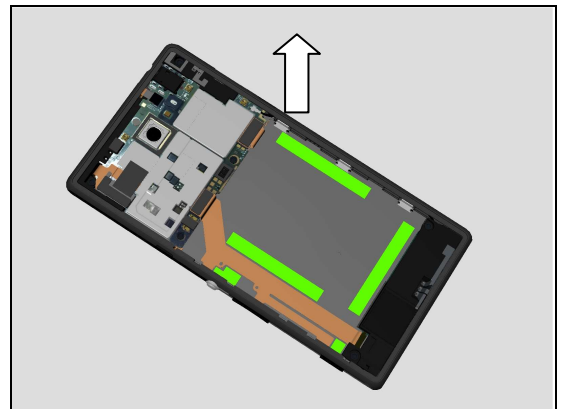
Apply 12 N.cm torque when tightening these six Screws with Bits (T5) as shown.



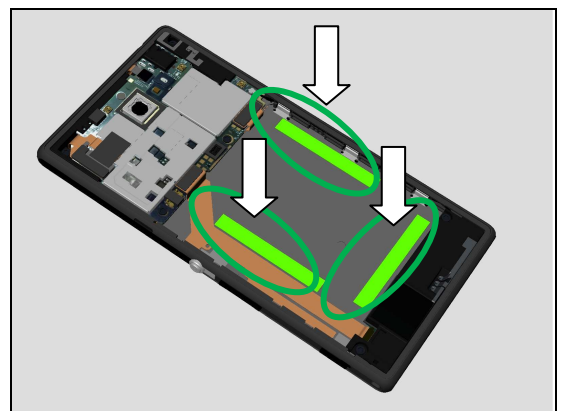
5.5 Embedded Battery Assy

Clean all the old surplus adhesives as shown first.

Note: Scrap, old surplus adhesives can not to be reused!

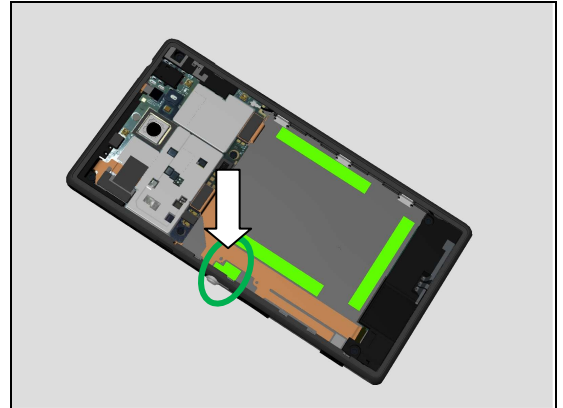


Assemble the new BAT Adhesive1.2.3 Battery as shown.

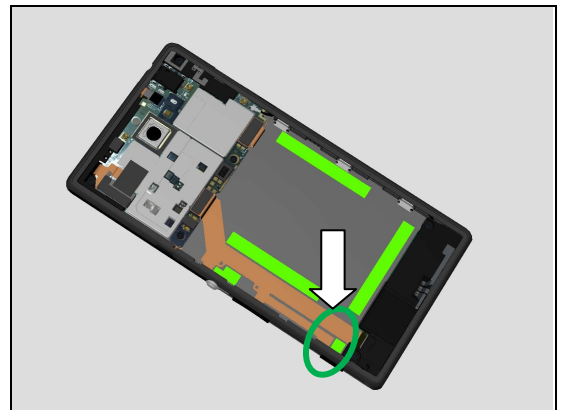


Reassembly

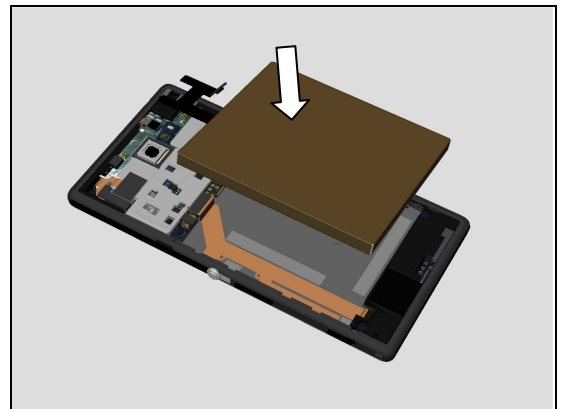
Assemble the new BAT Adhesive5 Power key as shown.



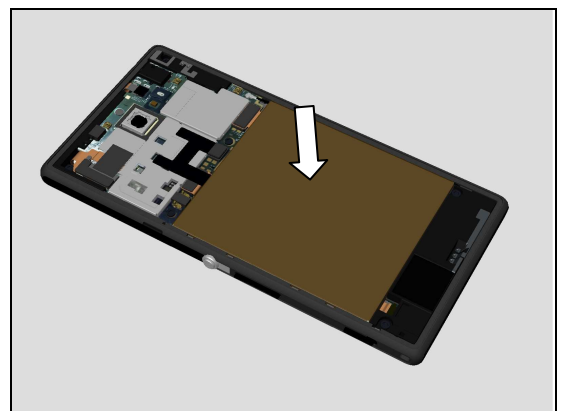
Assemble the new BAT Adhesive4 Camera key as shown.



Insert Battery into its position.

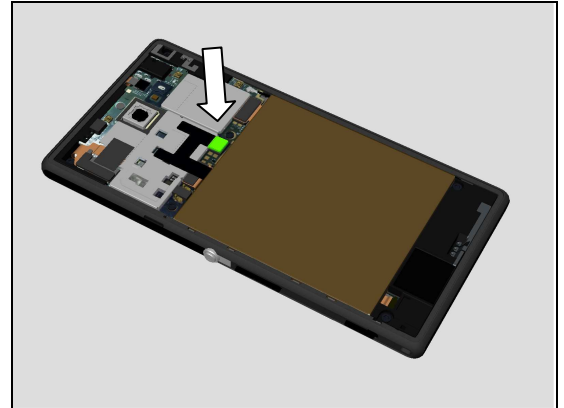


Press down the Battery to secure its position.



Reassembly

Close the BtB connector of Embedded Battery Assy.



5.6 Battery Cover Assy

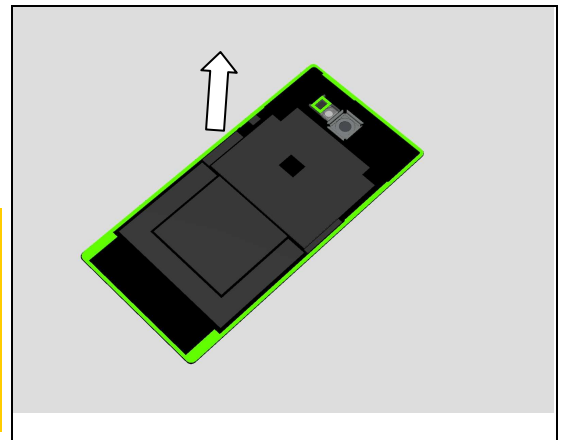
Prepare the Battery Cover Assy.

Clean all the old surplus adhesives as shown.

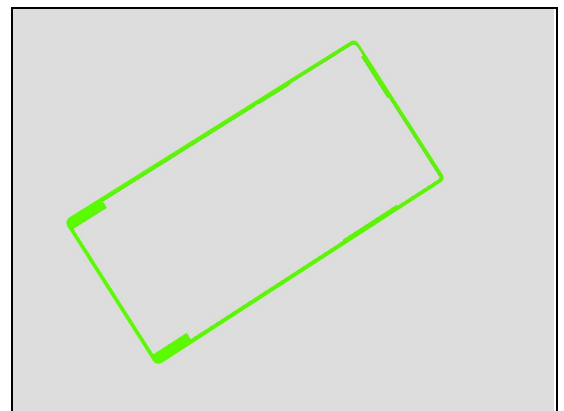
Note: Scrap, old surplus adhesives can not to be reused!

Note: Use Isopropyl Alcohol - 99 % for cleaning around the Battery Cover Assy.

Note: no need of cleaning for new Battery Cover Assy because new Battery Cover Assy already have new BC Adhesive1 Battery Cover and new Flash Lens Adhesive.

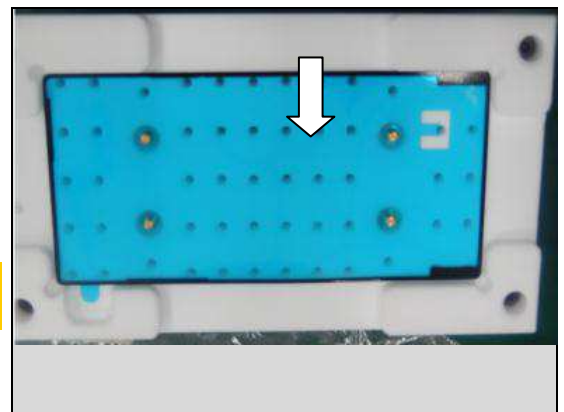


Prepare the new BC Adhesive1 Battery Cover.



Place the new BC Adhesive1 Battery Cover on Battery Cover Adhesive alignment Fixture first, ensuring it is flat enough.

Note: Make sure the new BC Adhesive1 Battery Cover on fixture is flat enough, no turn up.

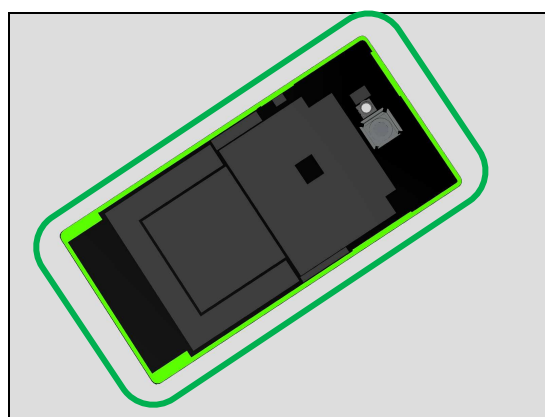


Reassembly

Place the Battery Cover Assy on fixture then and press it carefully.

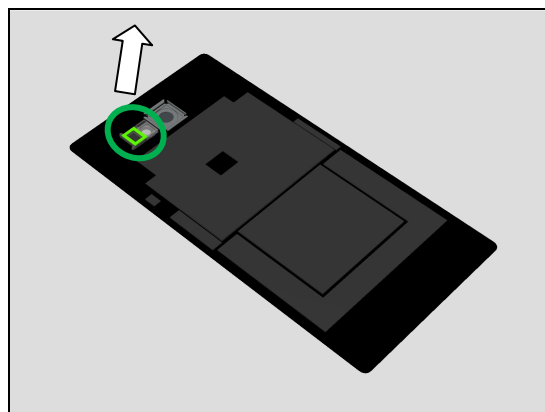


The new BC Adhesive1 Battery Cover is attached on Battery Cover Assy.

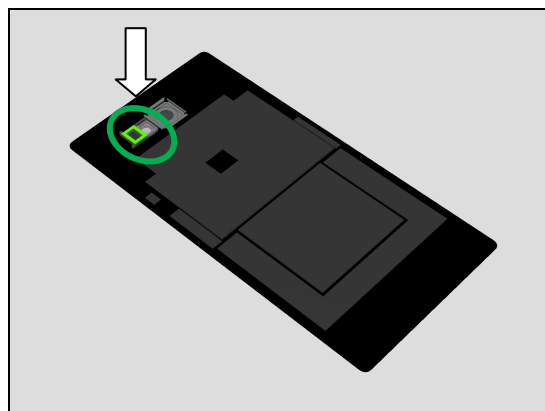


Clean old surplus of Flash Lens Adhesive first.

Note: Scrap! Cannot be reused.



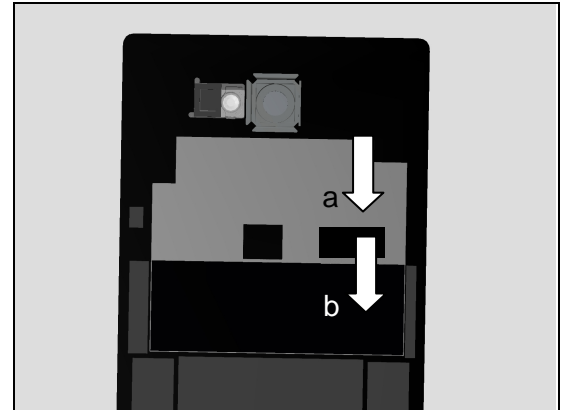
Attach new Flash Lens Adhesive on Battery Cover Assy then.



Reassembly

Attach new NFC Protection Film (a) first and NFC Black Mylar (b) then onto Battery Cover Assy.

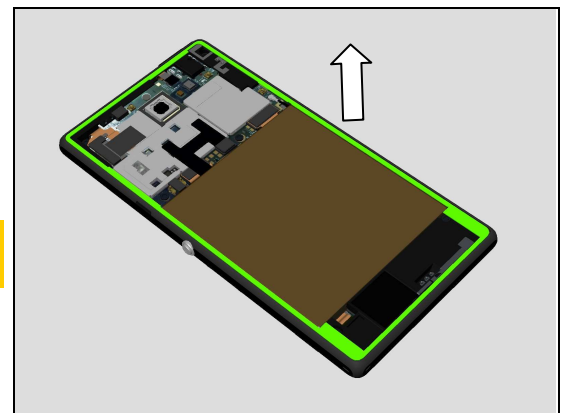
Note: Scrap the old NFC Protection Film and NFC Black Mylar, cannot be reused!



Clean all the old surplus adhesives on Core units as shown:

Note: Scrap, old surplus adhesives can not to be reused!

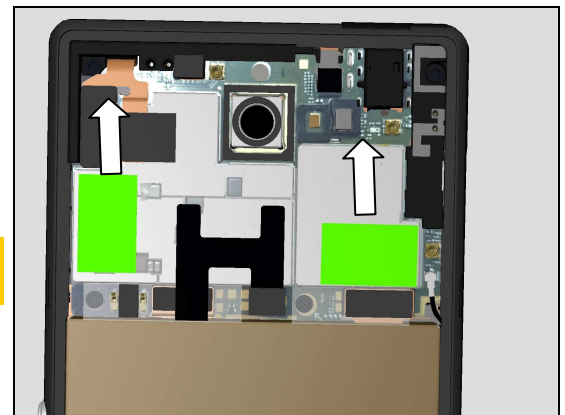
Note: Use Isopropyl Alcohol - 99 % for clean around the Front Cover LCM TP Assy.



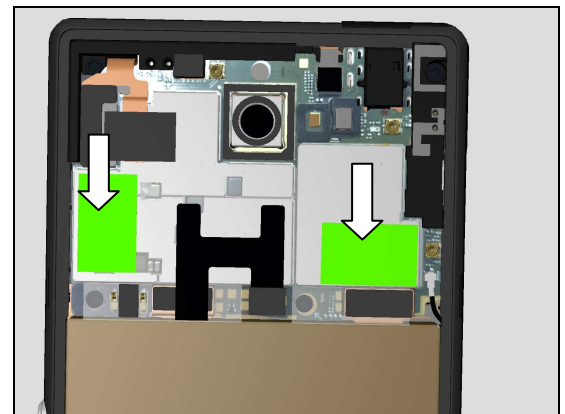
Clean all the old surplus of Adhesive Shield Cover as shown on Main PBA.

Note: Scrap, old surplus adhesives can not to be reused!

Note: Use Isopropyl Alcohol - 99 % for clean around the Front Cover LCM TP Assy.



Attach new of Adhesive Shield Cover as shown on Main PBA.



Reassembly

Assemble the Battery Cover Assy onto Core Unit.

Note:

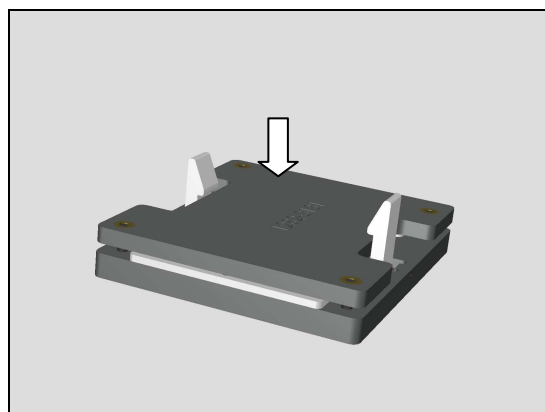
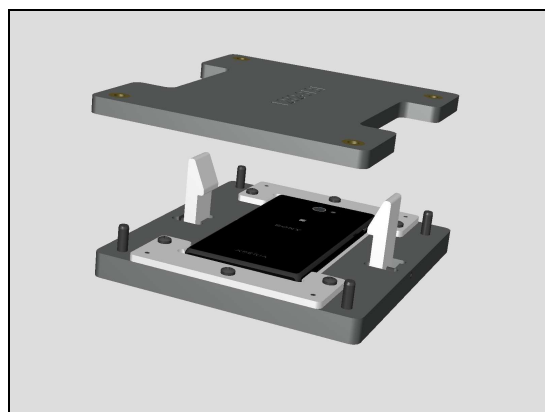
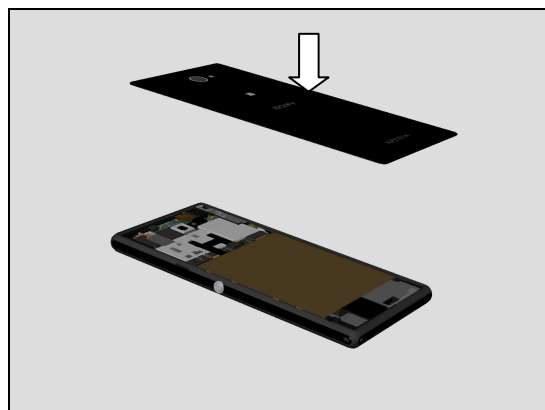
1. New BC Adhesive1 Battery Cover and new Flash Lens Adhesive are attached on Battery Cover Assy.
2. New Adhesive Shield Cover are attached on Main PBA.
3. New NFC Protection Film and New NFC Black Mylar are attached on Battery Assy.

Press the Battery Cover Assy around carefully on Core Unit.

Place phone onto the Battery Cover Press Fixture.

Note: Battery Cover Assy is up direction;
Pay attention about the phone's direction.

Close the Battery Cover Press Fixture and keep 180 seconds for pressing.



6 Revision History

Rev.	Date	Changes / Comments
1	2014-08-20	Initial release